

Symposium on

# Interventional Echocardiography

and Decision-making in Structural Heart Disease

# 2nd ANNUAL

## FINAL PROGRAM

March 3, 2018

Loews Atlanta Hotel

Atlanta, GA

### Course Co-Director

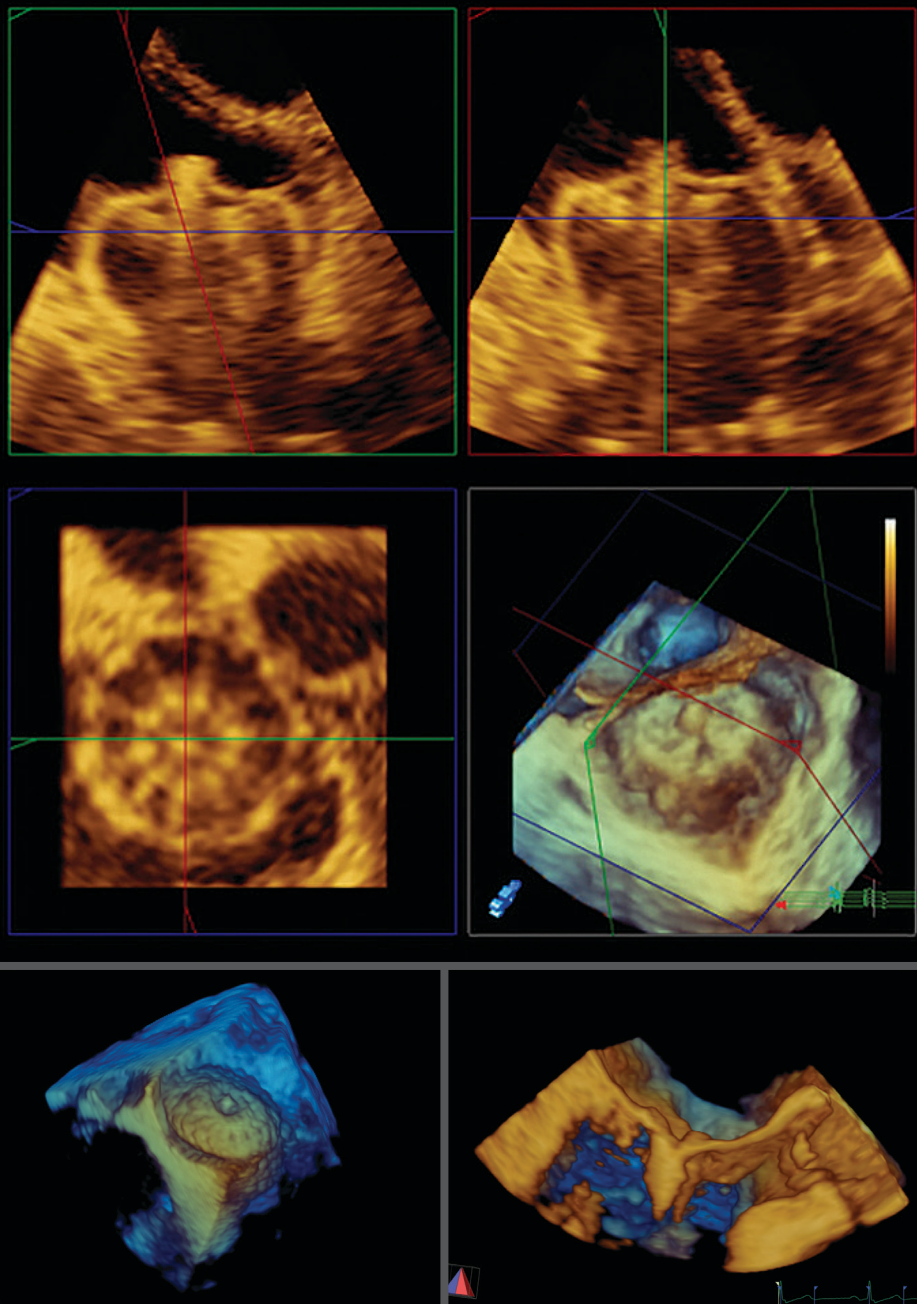
**G. Burkhard Mackensen, MD, PhD, FASE**

University of Washington Medical Center  
Seattle, WA

### Course Co-Director

**Sunil Mankad, MD, FASE**

Mayo Clinic  
Rochester, MN



Jointly provided by ASE and the ASE Foundation, and held in cooperation with the Society of Cardiovascular Anesthesiologists.

This event is endorsed by  
European Association  
of Cardiothoracic  
Anesthesiology (EACTA)



## Course Co-Director

### **G. Burkhard Mackensen, MD, PhD, FASE**

University of Washington  
Medical Center  
Seattle, WA



## Course Co-Director

### **Sunil Mankad, MD, FASE**

Mayo Clinic  
Rochester, MN

## Faculty

### **Rebecca T. Hahn, MD, FASE**

Columbia University  
Medical Center  
New York, NY

### **Dmitry Levin**

University of Washington  
Medical Center  
Seattle, WA

### **Feroze Mahmood, MD, FASE**

Beth Israel & Deaconess  
Medical Center  
Boston, MA

### **Randolph Martin, MD, FASE**

Past President, ASE  
Piedmont Heart Institute  
Atlanta, GA

### **Christopher Meduri, MD, MPH**

Piedmont Heart Institute  
Atlanta, GA

### **Alina Nicoara, MD, FASE**

Duke University Medical Center  
Durham, NC

### **Mark Reisman, MD**

University of Washington  
Medical Center  
Seattle, WA

### **Douglas Shook, MD, FASE**

Brigham & Women's Hospital  
Boston, MA

### **Deborah Tabachnick, MD**

Baylor Scott and White Cardiac  
Surgery Specialists  
Plano, TX

### **Dee Dee Wang, MD, FASE**

Henry Ford Health System  
Detroit, MI

## Overview of ASE's Symposium

The Symposium on Interventional Echocardiography and Decision-making in Structural Heart Disease is not only a fantastic offering immediately following SCA Echo Week 2018, but the content focuses on the role of echocardiography within the structural heart team.

This symposium will feature multidisciplinary experts in interventional echocardiography, interventional cardiology, cardiac anesthesiology, and cardiac surgery – all engaged in the heart valve team approach to structural heart disease. The program is composed of various educational formats including pertinent didactic lectures, interactive illustrations of procedural image guidance during cutting-edge, catheter-based, structural heart interventions, bio-skills demonstrations that correlate clinical presentations, echocardiographic imaging and actual pathology, as well as simulations of heart valve team conferences where structural heart cases are being discussed.

All attendees should have a practical knowledge of echocardiography to fully benefit from this program.

## Target Audience

The Symposium on Interventional Echocardiography and Decision-making in Structural Heart Disease will provide an ideal educational forum for cardiologists, cardiac anesthesiologists, fellows and other trainees, sonographers, surgeons, and others who either perform procedural image guidance with TEE or are involved in catheter-based therapies to structural heart disease.

## Learning Objectives

- Illustrate the utility of real-time two- and three-dimensional transesophageal echocardiography (2D and 3D TEE) in interventional echocardiography
- Demonstrate procedure-specific imaging needs in the structural heart disease domain
- Discuss procedure-specific challenges and how to overcome them with procedural TEE and procedural intracardiac echo (ICE)
- Review appropriate procedure-specific terminology that facilitates communication between the interventional echocardiographer and the interventionalist/surgeon
- Recognize potential complications of percutaneous interventions for structural heart disease using echocardiography to provide safe and more efficacious care
- Define the role of the interventional echocardiographer as a key member of the multi-disciplinary heart valve team

## Commercial Support Disclosure Statement

**Educational Grants:** The activity is supported in part by unrestricted educational grants from Abbott, Biosense Webster, Boston Scientific, Edwards Lifesciences, LivaNova, and Medtronic, Inc.

# Schedule of Events

## Saturday, March 3, 2018 - Ellington Ballroom

|         |                                       |
|---------|---------------------------------------|
| 7:00 AM | <b>Registration and Breakfast</b>     |
| 7:25 AM | <b>Welcome</b><br><i>G. Mackensen</i> |

## Catheter-based Interventions for the Tricuspid Valve

*Moderators: R. Hahn, R. Martin*

|         |  |
|---------|--|
| 7:30 AM | <b>Anatomic Perspectives of the Interventional Cardiologist</b><br><i>D. Levin, M. Reisman</i> |
| 7:50 AM | <b>What Are We Doing Now and What We Will Be Doing in Five Years?</b><br><i>C. Meduri</i>      |
| 8:10 AM | <b>Tricuspid Valve Repair: Image Guidance with TEE</b><br><i>R. Hahn</i>                       |
| 8:30 AM | <b>Question and Answer</b>   |
| 8:40 AM | <b>Refreshment Break</b>   |

## Percutaneous Valve in Native Mitral Valve

*Moderators: S. Mankad, M. Reisman*

|          |  |
|----------|--|
| 8:45 AM  | <b>Planning Perspectives for Native Mitral Valve-In-Valve</b><br><i>D. Wang</i>  |
| 9:05 AM  | <b>Percutaneous Valve in Native With and Without Mitral Valve Calcification: When to Go Hybrid</b><br><i>D. Tabachnick</i> |
| 9:25 AM  | <b>Procedural TEE for Native Mitral Valve-in-Valve (ViV) and Valve-in-Ring (ViR)</b><br><i>G. Mackensen</i>                |
| 9:45 AM  | <b>Question and Answer</b>   |
| 10:00 AM | <b>Refreshment Break</b>   |

## Transseptal Approaches and MitraClip

*Moderators: G. Mackensen, D. Wang*

|          |  |
|----------|--|
| 10:15 AM | <b>Transseptal Approaches: Anatomic Perspectives of the Interventional Cardiologist</b><br><i>D. Levin, M. Reisman</i> |
| 10:35 AM | <b>2D and 3D TEE to Make the Transseptal Puncture Efficient and Safe</b><br><i>F. Mahmood</i>                          |
| 10:55 AM | <b>Complex Transcatheter MitraClip: Commissural and Inter-clip Regurgitation</b><br><i>D. Shook</i>                    |
| 11:15 AM | <b>Question and Answer</b>   |
| 11:30 AM | <b>Lunch</b>   |

## Transcatheter Valves in Degenerative Bioprosthetic Valves

*Moderators: R. Martin, C. Meduri*

|          |  |
|----------|--|
| 12:30 PM | <b>Rapid Fire: Pre-Procedure Assessment of the Patient with Failing Mitral or Aortic Bioprosthesis</b><br><i>S. Mankad</i> |
| 12:50 PM | <b>Aortic Valve-in-Valve with TAVR: Role of Procedural TEE</b><br><i>A. Nicoara</i>  |

|         |   |
|---------|---|
| 1:10 PM | <b>Mitral Valve-in-Valve: How to Optimize the Implantation</b><br><i>D. Shook</i> |
|---------|---|

|         |                            |
|---------|----------------------------|
| 1:40 PM | <b>Question and Answer</b> |
|---------|----------------------------|

|         |                          |
|---------|--------------------------|
| 2:00 PM | <b>Refreshment Break</b> |
|---------|--------------------------|

## Heart Valve Team: Putting It All Together

|         |   |
|---------|---|
| 2:15 PM | <b>Simulated Heart Valve Team Meeting: Case Presentations with Focus on Tricuspid Valve</b><br><i>F. Mahmood</i><br><i>Panelists: R. Hahn, R. Martin, C. Meduri, D. Tabachnick, D. Wang</i> |
| 3:00 PM | <b>Simulated Heart Valve Team Meeting: Case Presentations with Focus on Mitral Valve</b><br><i>D. Wang</i><br><i>Panelists: G. Mackensen, S. Mankad, M. Reisman, D. Tabachnick</i>          |
| 3:45 PM | <b>Question and Answer and Closing Remarks</b>  |
| 4:00 PM | <b>Adjourn</b>  |

## Accreditation and Designation

This activity has been planned and implemented in accordance with the Essential Areas and Policies of the Accreditation Council for Continuing Medical Education (ACCME) through the joint providership of the American Society of Echocardiography and the American Society of Echocardiography Education and Research Foundation. The American Society of Echocardiography is accredited by the ACCME to provide continuing medical education for physicians.

The American Society of Echocardiography designates this live activity for a maximum of **7.0 AMA PRA Category 1 Credits™**. Successful completion of this CME activity, which includes participation in the evaluation component, enables the participant to earn **7.0 MOC points in the American Board of Internal Medicine's (ABIM) Maintenance of Certification (MOC)** program.

This activity contributes to the CME requirement for Part II: Lifelong Learning and Self Assessment of the American Board of Anesthesiology's (ABA) redesigned Maintenance of Certification in Anesthesiology Program® (MOCA®), known as MOCA 2.0®. Successful completion of this CME activity, which includes participation in the evaluation component, enables the participant to earn up to **7.0 MOCA points in the ABA's MOCA 2.0** program.

Participants will earn MOC points equivalent to the amount of CME credits claimed for the activity. It is ASE's responsibility to submit participant completion information to ACCME for the purpose of granting ABIM MOC and ABA MOCA 2.0 points.



Maintenance of Certification in Anesthesiology Program® and MOCA® are registered certification marks of the American Board of Anesthesiology®. MOCA 2.0® is a trademark of the American Board of Anesthesiology®.

# Faculty Disclosures

## Disclaimer

The information provided during this CME activity is for continuing education purposes only and is not meant to substitute for the independent medical judgment of a healthcare provider relative to diagnostic and treatment options of a specific patient's condition.

## Disclosure

ASE is committed to ensuring that its educational mission and all educational programs are not influenced by the special interests of any corporation or individual, and its mandate is to retain only those speakers whose financial interests can be effectively resolved to maintain the goals and educational integrity of the program. While a monetary or professional affiliation with a corporation does not necessarily influence a speaker's presentation, the Essential Areas and Policies of the ACCME require that any relationships that could possibly conflict with the educational value of the program be resolved prior to the educational session and disclosed to the audience. In accordance with these policies, ASE implemented mechanisms prior to the planning and implementation of this CME activity to identify and resolve conflicts of interest for all individuals in a position to control content.

## Faculty Disclosure

**The following faculty members do not have any relationships with industry/commercial supporters to disclose:**

Dmitry Levin

G. Burkhard Mackensen, MD, PhD, FASE

Feroze Mahmood, MD, FASE

Sunil Mankad, MD, FASE

Randolph Martin, MD, FASE

Alina Nicoara, MD, FASE

Mark Reisman, MD

**The following faculty members do have financial relationships with industry/commercial supporters to disclose:**

Rebecca Hahn, MD, FASE - Abbott Structural (Speaker / Speaker's Bureau); Boston Scientific (Speaker / Speaker's Bureau); GE Medical (Speaker / Speaker's Bureau); Gore and Associates (Consultant, Advisor); NaviGate (Consultant, Advisor); Philips Healthcare (Speaker / Speaker's Bureau)

Christopher Meduri, MD, MPH - Abbott (Consultant, Advisor); Boston Scientific (Speaker / Speaker's Bureau); Medtronic (Consultant, Advisor)

Douglas Shook, MD, FASE - Boston Scientific (Other – Education); Edwards Lifesciences (Other – Education)

Dee Dee Wang, MD, FASE - Boston Scientific (Consultant, Advisor); Edwards Lifesciences (Consultant, Advisor); Materialise (Consultant, Advisor)

**The following members of the ASE CME Committee, Education Committee, and Board of Directors (Not serving as faculty) do not have any relationships with industry/commercial supporters to disclose:**

Karima Addetia, MD; Carolyn Altman, MD, FAHA, FASE; Bonita Anderson, MAPPLSC, DMU, AMS, ACS, FASE; Federico Asch, MD, FASE; Louis Bezold, MD, FASE; Lori Blauwet, MD, FASE; Merri Bremer, EdD, RN, RDCS, ACS, FASE; Andra Duncan, MD, FASE; Benjamin W. Eidem, MD, FASE; Gregory Ensing, MD, FASE; Alan Finley, MD, FASE; John Gorcsan III, MD, FASE; Tia Gordon, RDCS, FASE; Edward Gill, MD, FASE; Brian Holland, MD, FASE; Judy Hung, MD, FASE; Amer Johri, MD, FASE; Eric Kallstrom, ACS, RDCS, FASE; James Kirkpatrick, MD, FASE; Allan L. Klein, MD, FASE; Rebecca Klug, BA, RT(R), RDCSA, FASE; Chris Kramer, ACS, RDCS, FASE; Aparna Kulkarni, MD; Stephen Little, MD, FASE; Elizabeth McIlwain, MHS, RCS, FASE; Praveen Mehrotra, MD, FASE; Carol Mitchell, PhD, RDMS, RDCS, RVT, RT(R), ACS, FASE; Monica Mukherjee, MD, FASE; Raymond Musarra, RDCS, RCS, FASE; Maryellen H. Orsinelli, RN, RDCS, FASE; Renee Palmer, MD, FASE; Matthew Parker, MD; Priscilla Peters, BA, RDCS, FASE; Sue D. Phillip, RCS, FASE; Juan Carlos Plana, MD, FASE; Nishath Quader, MD, FASE; Hedda Richards, RDCS, RCS, FASE; Geoffrey Rose, MD, FASE; Liza Sanchez, RCS, FASE; Elaine Shea, ACS, RCS, RDCS, FASE; Maya Skoczylas, RDCS, RVT; Timothy Slesnick, MD, FASE; Gbemiga Sofowora, MD, FASE; Shubhika Srivastava, MD, FASE; Richard Stacey, MD, FASE; Madhav Swaminathan, MD, FASE; Carolyn Taylor, MD, FASE; James D. Thomas, MD, FASE; Richard Weiss, MD, FASE; Bryan Wells, MD, FASE; David Wiener, MD, FASE; Danita Yoerger Sanborn, MD, FASE

**The following members of the current ASE Education Committee and Board of Directors (Not serving as faculty) have relationships with industry/commercial supporters to disclose:**

Keith Collins, MS, RDCS, FASE - IBM (Stock Ownership)

Sabe De, MD, FASE - Astra Zeneca (Speakers Bureau); Bayer (Speakers Bureau)

Jonathan Lindner, MD, FASE - GE Healthcare (Research Grant (Including PI))

Margaret Park, BS, ACS, RDCS, RVT, FASE - Davis Publishing Inc. (Royalty, Patents)

William Perez, MD, MA, FASE - Alibaba Holdings (Stock Ownership); American Energy Industries (Stock Ownership) Myriad Genetics (Stock Ownership)

Vera Rigolin, MD, FASE - Pfizer (Stock Ownership)

Raymond Stainback, MD, FASE - GE (Stock Ownership)

**All members of the ASE staff who were involved in the planning and implementation of this activity do not have any relationships with industry/commercial supporters to disclose:**

Christina LaFuria, Director of Education

Mary Lawson, CME Coordinator

Jaclyn Levine, Meeting Planner

Erin McClure, Director of Meetings

Robin Wiegerink, MNPL, Chief Executive Officer

SEE THE SOUND  
**ASE2018**  
HEAR THE SCIENCE

American Society of  
Echocardiography  
29th Annual  
Scientific Sessions

**JUNE 22-26**  
**NASHVILLE★TN**

Gaylord Opryland Resort  
& Convention Center  
ASEScientificSessions.org