

ECHO FLORIDA

ANNUAL 8th



ADVANCE PROGRAM

October 13 – 15, 2019

Preconference Learning Lab
Available October 12

Disney's Yacht & Beach Club Resorts
Walt Disney World®, FL

Course Director

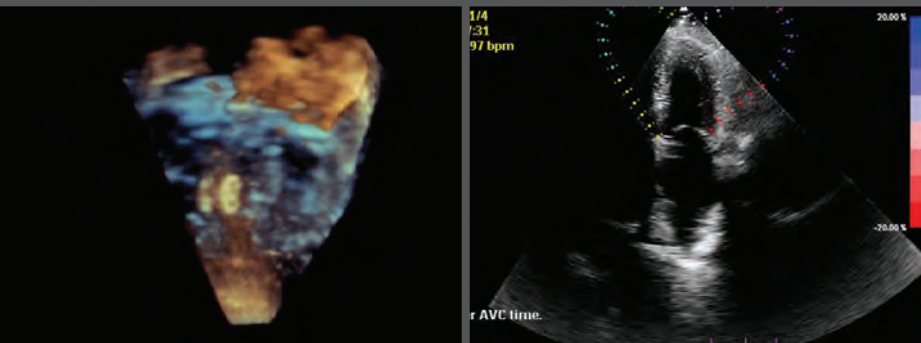
Gerard P. Aurigemma, MD, FASE
UMass Memorial Medical Center
Worcester, MA

Course Co-Director

Linda D. Gillam, MD, MPH, FASE
Past President, ASE
Morristown Medical Center
Morristown, NJ

Learning Lab Director

Matt Umland, ACS, RDCS, FASE
Aurora Health Care
Milwaukee, WI



Register now at ASEcho.org/EchoFlorida



Program Information

Overview of Echo Florida

The Echo Florida course is a comprehensive review of cardiovascular ultrasound in clinical practice. The faculty is composed of experts who will discuss the strengths and limitations of established and emerging technologies and illustrate how these technologies can be used to improve and streamline patient care in a cost-conscious manner.

Course Highlights

There is heavy emphasis on case-based learning.

Topics include:

- Coronary artery disease including stress testing
- Valvular heart disease
- Interventional imaging
- Heart failure (systolic and diastolic) and cardiomyopathy
- Emerging technologies including contrast, 3D/4D echocardiography, and strain imaging
- Complex congenital heart disease
- Case-based demonstrations on role of 2D and real time 3D/4D echocardiography to select, guide, and follow percutaneous structural heart disease interventions such as transcatheter aortic valve replacement and percutaneous mitral valve repair

Preconference Learning Lab *(Additional fee required.)*

A learning lab will be offered on Saturday, October 12. This session requires a separate registration and is included in the total hours of educational content offered at the course.

Left Ventricular Function and Strain

This Learning Lab will be interactive with a combination of live scanning, computer based sessions, and case examples. Sessions will show attendees exactly how to make measurements to assess chamber quantification, systolic and diastolic function, and valvular function.

3D Workshop

The 3D workshop will be a combination of live scanning and computer-based sessions focusing on 3D acquisition techniques, as well as cropping and image display. After introductory lectures and live scanning, the session will break into a workshop with different 3D vendors. There will be limited numbers of laptops pre-loaded with 3D examples for hands-on learning. This workshop will cover 3D quantification of ventricular size and function, as well as valvular morphology and function.

Who Should Attend

This course is designed for adult and pediatric cardiologists, cardiovascular surgeons, cardiovascular anesthesiologists, cardiac radiologists, fellows in training, cardiovascular sonographers, cardiovascular nurse specialists, internists, intensivists, and emergency physicians with special interest in clinical cardiology and echocardiography.

Course Registration

Registration fees include breakfasts, lunches, refreshment breaks, access to course materials, and CME credit. ASE members take advantage of reduced registration fees as a benefit of membership. Register online at ASEcho.org/EchoFlorida.

ASE Membership

Nonmember registrants for the 8th Annual Echo Florida course will receive a complimentary ASE membership through December 31, 2020 with their registration. **Membership is only available to those who have never been a member of ASE.** ASE serves its members in numerous ways by providing education, advocacy, research, practice guidelines, and a community for their profession. ASE membership includes over \$750 of FREE CME credits a year, in addition to discounts on all ASE educational courses and products. Also included is a monthly subscription to the *Journal of the American Society of Echocardiography* (JASE), access to CASE, ASE's online case reports journal, help with legislative coding and reimbursement issues, and other career resources. A plethora of online tutorials, webinars, and other educational activities make membership beneficial to echocardiographers located around the world. View the extensive list of member benefits at ASEcho.org.

Accreditation and Designation

The American Society of Echocardiography is accredited by the Accreditation Council for Continuing Medical Education to provide continuing medical education for physicians.

The American Society of Echocardiography designates this live activity for a maximum of **30.5 AMA PRA Category 1 Credits™** pending approval. Physicians should claim only the credit commensurate with the extent of their participation in the activity.

Successful completion of this CME activity enables the participant to earn **MOC points in the American Board of Internal Medicine's (ABIM) Maintenance of Certification (MOC) program and/or The American Board of Anesthesiology® (ABA) Maintenance of Certification in Anesthesiology Program® or MOCA®.** Participants will earn MOC and/or MOCA points equivalent to the amount of CME credits claimed for the activity. It is ASE's responsibility to submit participant completion information to ACCME for the purpose of granting ABA MOCA and/or ABIM MOC points.



Maintenance of Certification in Anesthesiology Program® and MOCA® are registered certification marks of the American Board of Anesthesiology®. MOCA 2.0® is a trademark of the American Board of Anesthesiology®.

Location Information & Accommodations

Disney's Yacht & Beach Club Resorts

Delight in the formal grace of a grand New England-style yacht club at this lakeside hotel. Relax in the inviting elegance of a plush lobby replete with nautical touches, explore the whimsical Stormalong Bay and rent a variety of watercraft from Bayside Marina. Sharing many amenities with its pastel-toned sister, Disney's Beach Club Resort, Disney's Yacht Club Resort is walking distance to Epcot® and a convenient boat ride to Disney's Hollywood Studios®.

Special Features: Beachside Water Recreation Area: Make a splash at Stormalong Bay, a three-acre water wonderland! Climb the mast of a life-size shipwreck to breeze down one of the highest hotel waterslides at Walt Disney World Resort. Catch currents in the lazy circular river, relax in one of three whirlpool spas and soak up the sun on the elevated tanning deck. Children can enjoy the gently sloping, beach entry and have a blast in the kiddie pool — complete with a miniature waterslide.

Magic at Your Fingertips: Plan and share your Walt Disney World vacation with the **My Disney Experience** mobile app. Manage your Disney Resort reservation, find Character Greeting locations and times, and access Resort Transportation routes all with the touch of your finger. Download the My Disney Experience app at the App Store or Google Play.

Make Time for the Magic!

As a Disney Resort Guest, you will enjoy special benefits that make your Walt Disney World® stay easier and more relaxing than ever. These benefits provide everything from extra time in the Theme Parks and convenient transportation.

Purchase Theme Park Tickets in Advance

Available only to meeting attendees, your guests, and family members, Disney's multi-day and half-day Meeting/Convention tickets are designed to fit any agenda and cannot be purchased at the Theme Park gates. To receive these special Theme Park tickets, you must purchase online at MyDisneyGroup.com/Echo2019 or call 407-939-4686.

Enhanced! Extra Magic Hour Benefit

Each day one of the Theme Parks opens an hour early or stays open up to three hours after regular Park hours for guests staying at select Disney Resorts, giving you even more time to enjoy select attractions before and after your meetings. This is a great way for you to maximize the value of your Disney Theme Park Tickets based around your schedule! Valid Theme Park admission and Walt Disney World® Resort ID are required.

Convenient Walt Disney World® Transportation

If you are arriving by air at Orlando International Airport, Disney's legendary service starts the moment you touch down and continues throughout your stay. **Disney's Magical Express®** — Take advantage of the latest innovation in Disney's legendary commitment to service and convenience. This exclusive complimentary shuttle and luggage delivery service conveniently takes you from the airport directly to Disney's Yacht & Beach Club Resorts and back again when it's time to return. It's the hassle-free benefit that allows you to arrive at your

meeting relaxed and stress-free. To book, call 407-939-4686 or visit MyDisneyGroup.com/Echo2019 for more information.

During your stay, enjoy the convenience of Disney transportation throughout Walt Disney World®. Enjoy a leisurely cruise on a charming water launch or stately ferryboat or take in the sites from an air-conditioned bus. Just steps from your door, boats and motor coaches are waiting to take you to and from the Theme Parks, Water Parks, the Downtown Disney® area, and more.

Accommodations

ASE has secured a block of rooms at a discounted rate of \$269 per night (tax and other fees not included) at **Disney's Yacht & Beach Club Resorts**. Hotel room reservations and park tickets can be booked online at MyDisneyGroup.com/Echo2019 or by contacting Disney directly at **407-939-4686**. Agents are available Monday–Friday 8:30 AM–6:00 PM and over the weekend 8:30 AM–5:00 PM. Please specify that you are with ASE to secure the group rate.

The room block will be held until **Tuesday, September 10, 2019**, or until the block is sold out. After this date, reservations will be accepted on a space-available basis. A deposit of one night's room and tax will be held at the time of the reservation. Deposits will be forfeited for any cancellations occurring five days or less prior to arrival.

Take advantage of group rates* and add a few extra days for a spectacular golf or spa getaway, or the perfect vacation with family and friends.

*Subject to availability of group rate rooms, ASE rooms may be reserved at the discounted group rate for the three days before Thursday, October 10, 2019 and the three days after Tuesday, October 15, 2019. Group rates may not be combined with any other discounts or offers.



Invited Faculty

Schedule of Events

Course Director

Gerard P. Aurigemma, MD, FASE
UMass Memorial Medical Center
Worcester, MA

Learning Lab Director

Matt Umland, ACS, RDCS, FASE
Aurora Health Care
Milwaukee, WI

Faculty

Doreen Defaria Yeh, MD
Massachusetts General Hospital
Boston, MA

Bryon A. Gentile II, MD
UMass Memorial Medical Center
Worcester, MA

Steven A. Goldstein, MD, FASE
MedStar Washington Hospital Center
Washington, DC

John Gorcsan III, MD, FASE
Washington University in St. Louis
St. Louis, MO

Madeline Jankowski, RDCS, FASE
Northwestern Memorial Hospital
Chicago, IL

Konstantinos P. Koulogiannis, MD
Morristown Medical Center
Morristown, NJ

Course Co-Director

Linda D. Gillam, MD, MPH, FASE
Past President, ASE
Morristown Medical Center
Morristown, NJ

Matthew Parker, MD
UMass Memorial Medical Center
Worcester, MA

Amit Patel, MD
University of Chicago Medical
Center
Chicago, IL

Muhamed Saric, MD, PhD, FASE
New York University
New York, NY

Vincent L. Sorrell, MD, FASE
University of Kentucky
Lexington, KY

Lissa Sugeng, MD, MPH, FASE
Yale University
New Haven, CT

Madhav Swaminathan
President, ASE
Duke University Medical Center
Durham, NC

Saturday, October 12, 2019

Learning Lab: Left Ventricular Function and Strain (Additional Fee Required)

7:00 AM	Breakfast
7:45 AM	Introduction to the Learning Lab <i>G. Aurigemma</i>
7:55 AM	Basic Left Ventricular Function <i>G. Aurigemma</i>
8:15 AM	Introduction to Strain: Theory and Applications <i>J. Gorcsan</i>
8:55 AM	Optimizing Imaging for Strain <i>J. Gorcsan, M. Jankowski, M. Umland</i>
9:55 AM	Refreshment Break
10:25 AM	Workshop: Review of Strain Cases <i>G. Aurigemma, J. Gorcsan, V. Sorrell</i>
12:25 PM	Lunch and Visit Exhibits

Learning Lab: 3D Workshop (Additional Fee Required)

1:25 PM	Introduction to 3D Learning Lab <i>L. Sugeng</i>
1:35 PM	Cardiac Anatomy: Learning the Basics for 3D <i>L. Sugeng</i>
2:05 PM	Basics of 3D TTE <i>M. Jankowski, L. Sugeng</i>
2:45 PM	Refreshment Break
3:00 PM	Valvular Quantification: The Impact of 3D for Valvular Morphology and Function <i>L. Sugeng</i>
3:25 PM	Optimizing 3D TEE Acquisition: Tricks of the Trade <i>L. Sugeng</i>
4:15 PM	Hands-on Workshop <i>B. Gentile, K. Koulogiannis, M. Parker</i>
5:15 PM	Adjourn

*“Conference was amazing!
I found the workshops very helpful.”* Past Echo Florida Attendee

Schedule of Events

Sunday, October 13, 2019

General Echocardiography

Moderator: L. Gillam

7:00 AM	Breakfast and Visit Exhibits
7:45 AM	Welcome <i>G. Aurigemma</i>
7:50 AM	President's Address <i>M. Swaminathan</i>
8:00 AM	Comprehensive Left Heart Echo: 2019 Guidelines <i>M. Jankowski, M. Parker</i>
8:25 AM	Comprehensive Right Heart Echo: 2019 Guidelines <i>L. Gillam, M. Umland</i>
8:55 AM	Systolic Function: Back to Basics <i>G. Aurigemma</i>
9:20 AM	Basic Diastolic Physiology and Assessment <i>G. Aurigemma, M. Umland</i>
10:00 AM	Question and Answer
10:20 AM	Refreshment Break and Visit Exhibits
10:35 AM	Strain Imaging: Myocardial Mechanics Simplified and Applied <i>J. Gorcsan</i>
11:15 AM	I Strain: How I Use Strain in Clinical Practice <i>J. Gorcsan, V. Sorrell</i>
11:45 AM	Where Contrast Administration Makes a Difference <i>L. Gillam</i>
12:15 PM	Lunch and Visit Exhibits
1:15 PM	How I Do a TEE: All the Views That are Fit to Print <i>L. Sugeng</i>
1:45 PM	3D Echo: Acquisition, Cropping, and Display <i>L. Sugeng</i>
2:30 PM	Cases Where 3D Really Made a Difference <i>L. Gillam, M. Parker, L. Sugeng</i>
3:00 PM	Question and Answer
3:20 PM	Refreshment Break and Visit Exhibits
3:35 PM	Quantitating MR: A Piece of PISA and Other Treats <i>M. Parker, M. Umland</i>
4:05 PM	Can't We All Just COAPT? Echo and the MitraClip <i>M. Parker, M. Saric</i>
4:35 PM	CMR and Regurgitation Quantitation: The Gold Standard? <i>A. Patel</i>

5:05 PM **Adjourn**

Monday, October 14, 2019

Valvular Heart Disease Part I

Moderator: TBD

7:00 AM	Breakfast and Visit Exhibits
7:45 AM	Basic and Advanced Assessment of Aortic Stenosis <i>M. Saric</i>
8:20 AM	Paradoxically Understandable Low Flow AS: Use of Dobutamine <i>L. Gillam</i>
8:50 AM	Assessing Prosthetic Valve Function: Differentiating Normal From Stenotic or Regurgitant <i>M. Parker</i>
9:20 AM	Question and Answer
9:35 AM	Refreshment Break and Visit Exhibits

Valvular Heart Disease Part II

Moderator: S. Goldstein

9:50 AM	TAVR Valve: Self-Expanding Indications. Who Should Get it and Will it Last? <i>M. Saric</i>
10:15 AM	You See What Had Happened Was...." Cases I Wish I Could Re-do <i>G. Aurigemma, M. Parker, M. Saric</i>
10:50 AM	Question and Answer
11:20 AM	Tricuspid Regurgitation: The Elephant in the Reading Room <i>L. Sugeng</i>
11:45 AM	Are These Scallops Fresh? Interesting Mitral Valve Cases <i>G. Aurigemma, S. Goldstein, L. Sugeng</i>
12:30 PM	Lunch and Visit Exhibits
1:30 PM	POCUS: The Genie is Out of the Bottle <i>M. Saric, V. Sorrell</i>
2:15 PM	Congenital Heart Disease Part I: The Unrepaired Adult <i>D. Defaria Yeh</i>
2:40 PM	Refreshment Break and Visit Exhibits
2:55 PM	Congenital Heart Disease Part II: The Repaired Adult <i>D. Defaria Yeh</i>
3:20 PM	Rapid Fire Echo Quiz: Everyone Plays <i>J. Gorcsan</i>

Schedule of Events

4:00 PM	Adjourn
Tuesday, October 15, 2019	
Clinical Echocardiography	
<i>Moderator: G. Aurigemma</i>	
7:00 AM	Breakfast and Visit Exhibits
8:00 AM	CMR in Myocardial Disease: Where it is Necessary for Patient Management <i>A. Patel</i>
8:30 AM	Hypertrophic Cardiomyopathy and Phenocopies <i>L. Gillam</i>
9:00 AM	Cases: Strain in Myocardial Disease <i>J. Gorcsan</i>
9:30 AM	Challenging Cases in Diastolic Function Assessment <i>G. Aurigemma</i>
10:00 AM	Question and Answer
10:20 AM	Refreshment Break and Visit Exhibits
10:30 AM	Cases: Interventional Imaging <i>S. Goldstein, M. Parker</i>
10:35 AM	Smoke, Sludge, and Tsuris: Imaging the LA Appendage <i>B. Gentile</i>
10:55 AM	“The Cath Showed What?” Challenging Stress Echo Cases <i>B. Gentile, M. Saric, V. Sorrell</i>
11:25 AM	Question and Answer
12:00 PM	Lunch and Visit Exhibits
1:00 PM	3 Pericardial Cases That You Will Never Forget! <i>S. Goldstein</i>



1:25 PM	Expert Consensus for Multimodality Imaging Evaluation of Adult Patients During and After Cancer Treatment <i>V. Sorrell</i>
1:50 PM	2020 Vision: Deep Learning and Other Advances and Their Impact on Echo Practice <i>A. Patel, M. Saric, V. Sorrell</i>
2:15 PM	Multimodality Approach to Diseases of the Aorta <i>A. Patel</i>
2:40 PM	Refreshment Break and Visit Exhibits
2:55 PM	Guidelines for the Use of Echocardiography in the Evaluation of a Cardiac Source of Embolism <i>M. Saric</i>
3:20 PM	Left Atrial Appendage Closure Devices <i>B. Gentile</i>
3:40 PM	CSI Echo Lab: Unforgettable Cases from the Files of a Master Echocardiographer <i>S. Goldstein</i>
4:00 PM	Question and Answer
	Adjourn

“Excellent course with great instructors. Covered a large number of clinically relevant topics with practical hands on advice.”

2018 Echo Florida Attendee



Register online at
ASEcho.org/EchoFlorida

October 13-15, 2019

Preconference Learning Lab Available on October 12

Disney's Yacht & Beach Club Resorts

Walt Disney World®, FL

Your Echo Florida registration fee includes breakfasts, lunches, refreshment breaks, access to course materials, and 30.5 hours of CME credits and MOC points and/or MOCA.

Name: _____

FIRST NAME

MIDDLE INITIAL

LAST NAME

Credential: MD DO PhD RN RCS RDCS Other

Institution: _____

Email Address: _____

(All correspondence regarding your registration including your confirmation will be sent to this email address.)

Street Address: _____

City: _____ State/Province: _____ Zip/Postal Code: _____ Country: _____

Telephone: _____ Fax: _____

ASE encourages participation by all individuals. If you have a disability or other specific needs including dietary, advance notification will help ASE to better serve you. Please contact ASE by email at Registrar@asecho.org or telephone at 919-861-5574.

Registration Fees	THROUGH SEPTEMBER 13, 2019	AFTER SEPTEMBER 13, 2019**
ASE Physician Member	\$875	\$975
Physician Nonmember*	\$1,100	\$1,200
ASE Sonographer/Allied Health Member/Fellow Member	\$650	\$750
Sonographer/Allied Health Nonmember/Fellow Nonmember*	\$820	\$920
Preconference Optional Session Fees Attendees must register for this workshop in advance in order to attend due to limited seating available.	Shared Computer	Individual Computer
Learning Lab: October 12, 2019	\$510	\$625

Attendees must register in advance in order to attend due to limited seating. More information on this educational opportunity are available online at ASEcho.org/echoflorida.

* This registration fee includes ASE membership through December 31, 2020. Membership is only available to those who have never been a member of ASE.

** On-site registration is available, but beginning October 12, 2019 all fees will increase by an additional \$100.

Payment Information Payment must accompany this form.

Check (payable to American Society of Echocardiography in U.S. dollars drawn on a U.S. bank) **Credit Card:** Visa MasterCard American Express

Cardholder's Name: _____

Card Number: _____ Expiration Date: _____ CVC #: _____

Registration cancellation fees may apply and ASE reserves the right to determine if a refund is possible. Please see the full cancellation policy online at ASEcho.org/echoflorida.

Register online and receive an immediate receipt! ASEcho.org/EchoFlorida

AMERICAN SOCIETY OF ECHOCARDIOGRAPHY INC, P.O. Box 890082, Charlotte, NC 28289-0082

Phone: 919-861-5574 • Fax: 919-882-9900 • Email: registrar@asecho.org • Website: ASEcho.org/EchoFlorida



ASE Foundation

American Society of Echocardiography
2530 Meridian Parkway
Suite 450
Durham, NC 27713

ECHO FLORIDA

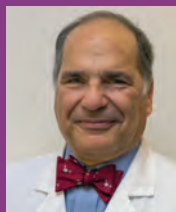
October 13-15, 2019

Preconference Learning Lab

Available on October 12

REGISTER NOW at

ASEcho.org/EchoFlorida



Course Director

Gerard P. Aurigemma, MD, FASE

UMass Memorial Medical Center
Worcester, MA



Course Co-Director

Linda D. Gillam, MD, MPH, FASE

Past President, ASE
Morristown Medical Center
Morristown, NJ



Learning Lab Director

Matt Umland, ACS, RDCS, FASE

Aurora Health Care
Milwaukee, WI