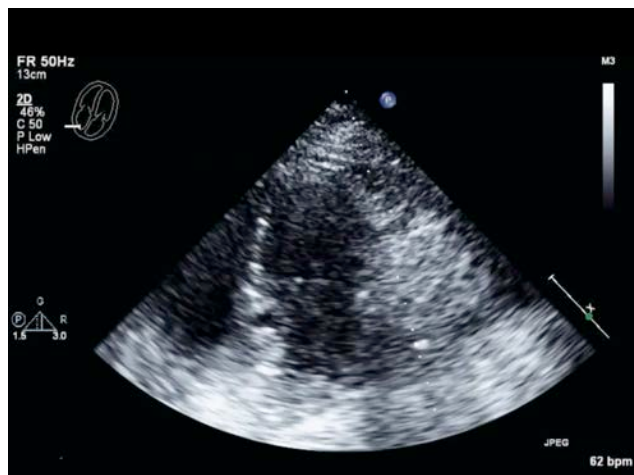


This is easy for gamers

BecherHcase3

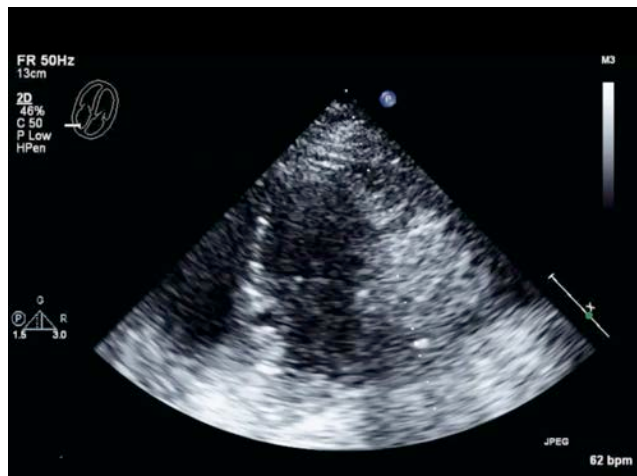
1

4 chamber view



2

4 chamber view

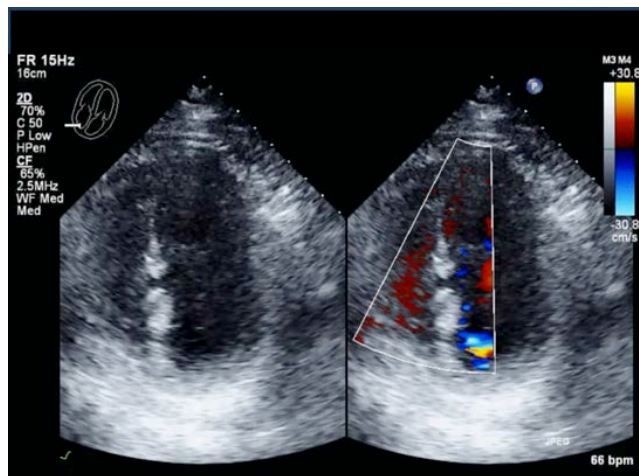


58 yrs, male
Admitted with ACS
No infarct
No cardiac murmur

Normal LV, RV size and
systolic function
No abnormal flow in the RV

3

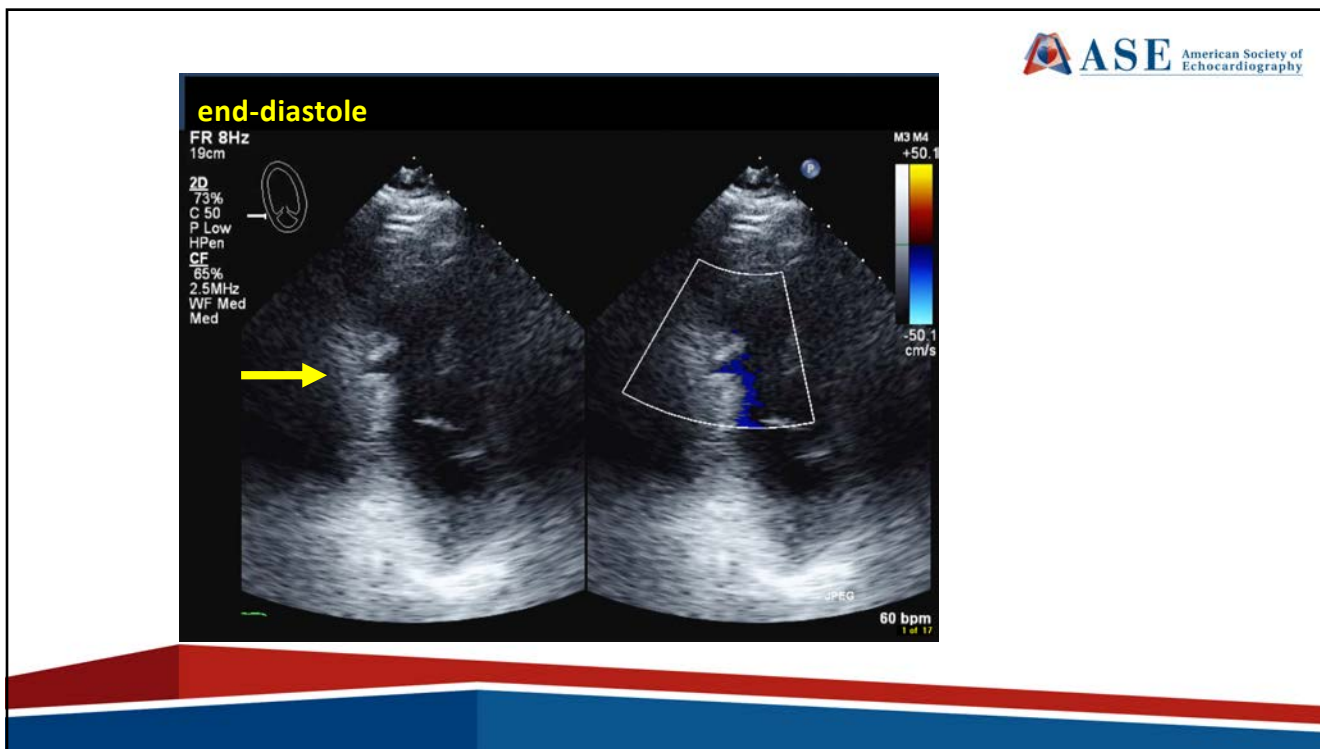
4 chamber view



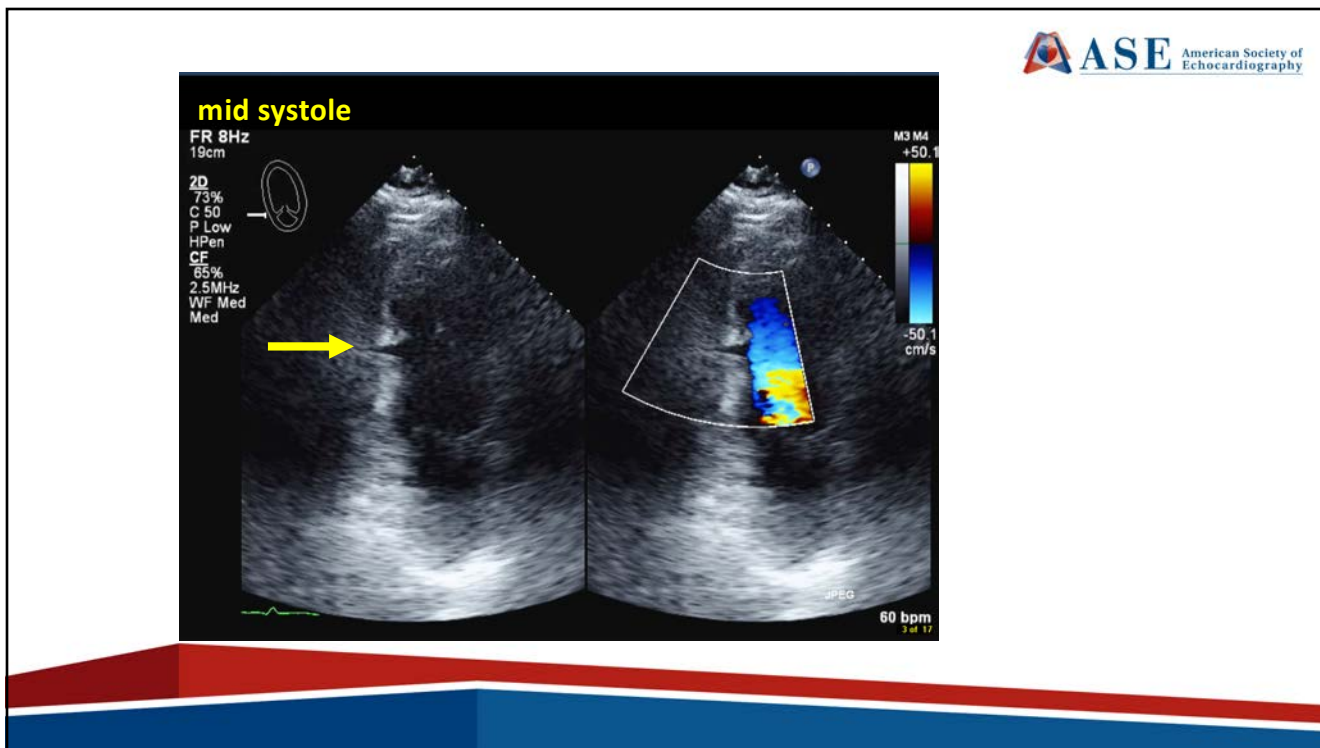
58 yrs, male
Admitted with ACS
No infarct
No cardiac murmur

Normal LV, RV size and
systolic function
No abnormal flow in the RV

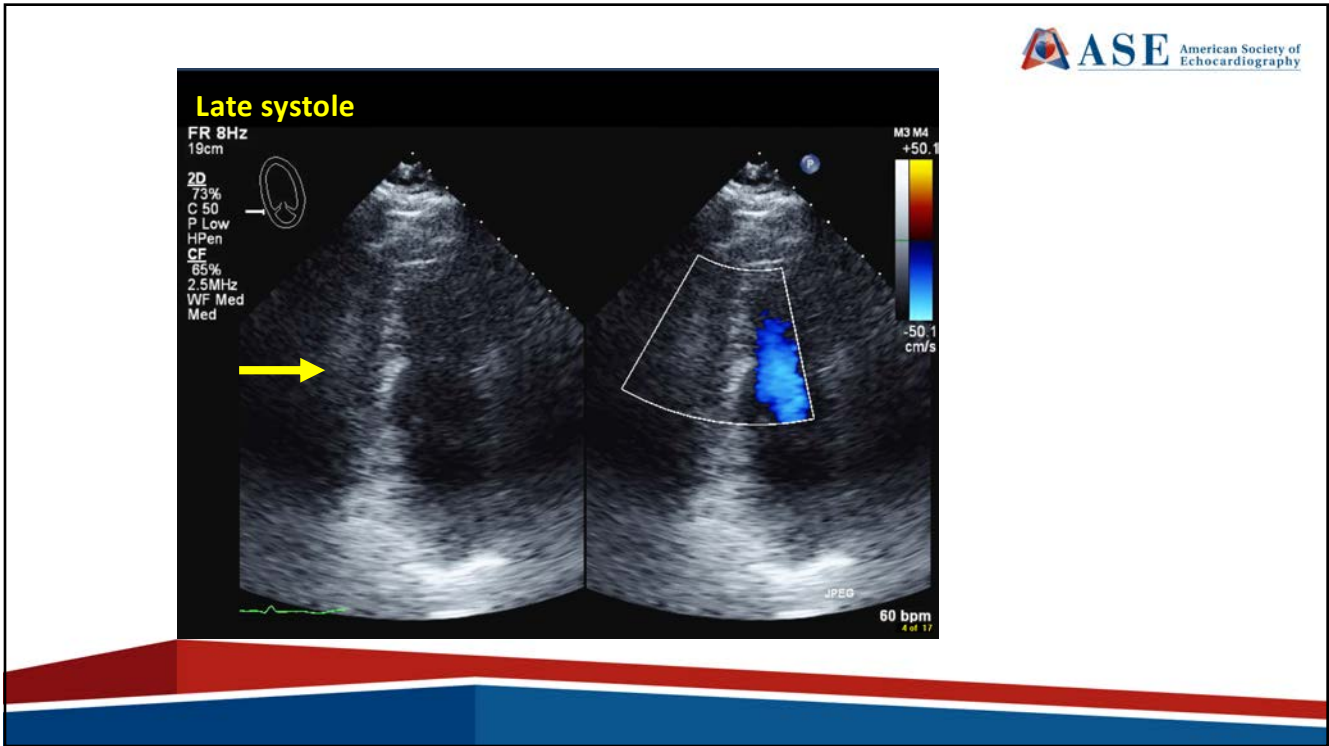
4



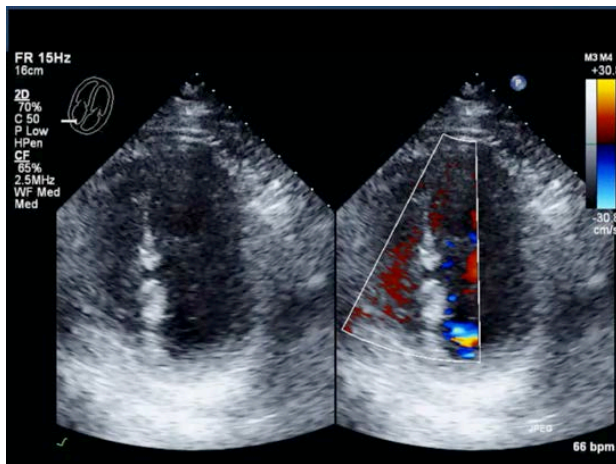
5



6



7

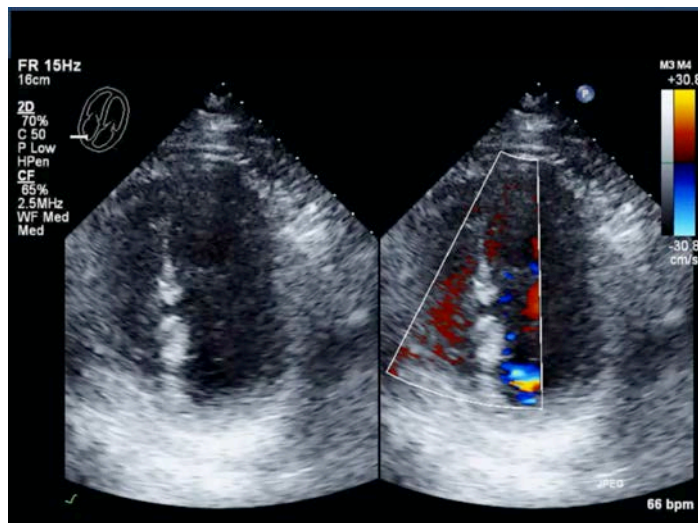


4 chamber view

Ready for a diagnosis?

1. Yes
2. No, I need UEA
3. NO, I recommend a TEE
4. No, I recommend a MRI

8

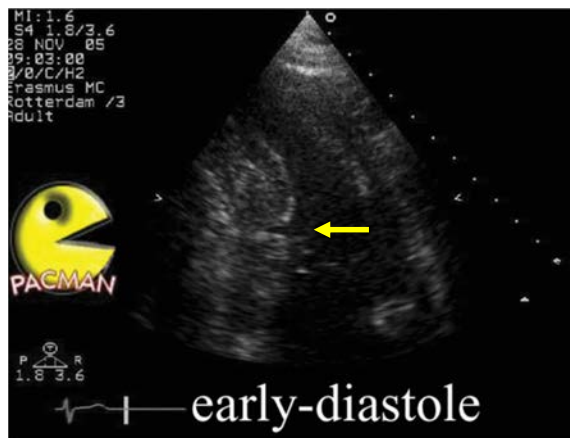


4 chamber view

Ready for a diagnosis?

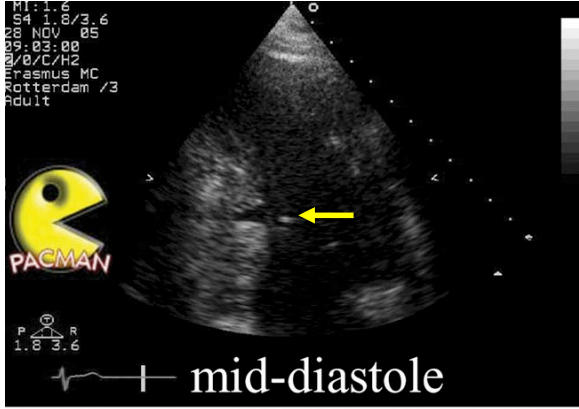
1. Yes
2. No, I need UEA
3. NO, I recommend a TEE
- 4.No, I recommend a MRI

Pacman Heart



Pujol E et al. European Journal of Echocardiography (2008) 9, 316–317

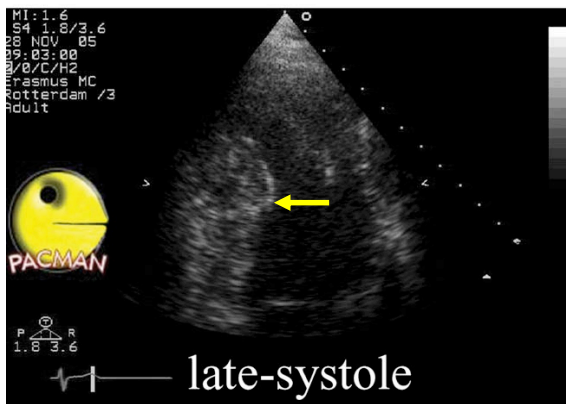
Pacman Heart



Pujol E et al. European Journal of Echocardiography (2008) 9, 316–317

11

Pacman Heart



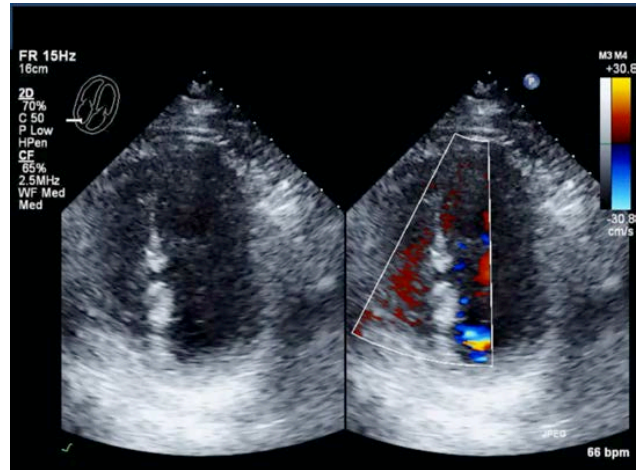
Pujol E et al. European Journal of Echocardiography (2008) 9, 316–317

12

PACMAN Heart

Incomplete VSD

- Congenital
- Post myocardial infarction

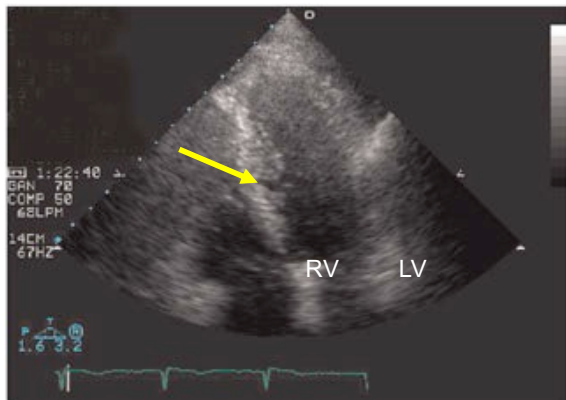


13

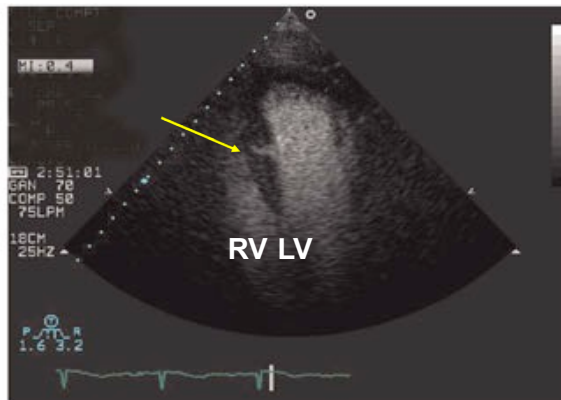


14

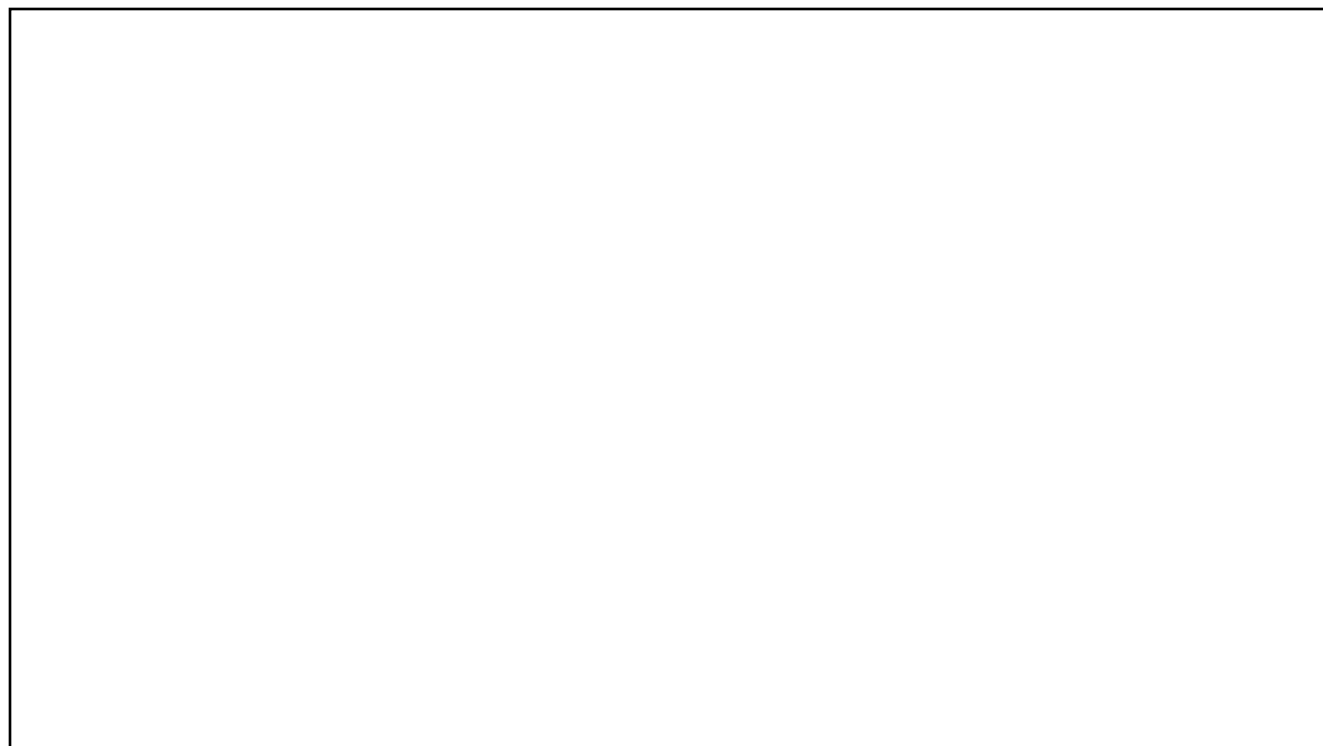
Pacman® Heart



4 chamber view



Pujol E et al. European Journal of Echocardiography (2008) 9, 316–317



Not forgotten but missing

BecherHcase4

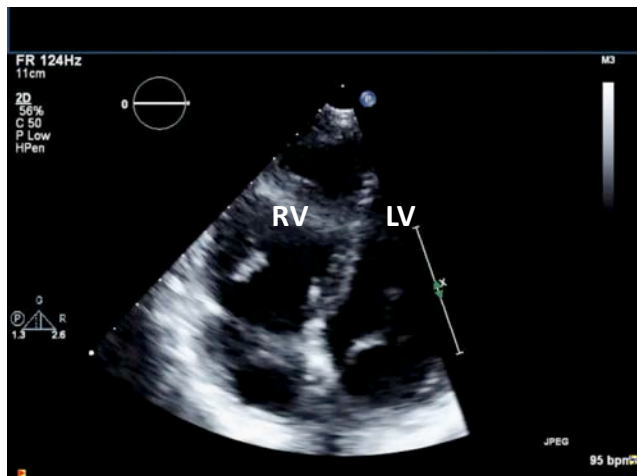
1

4 chamber view



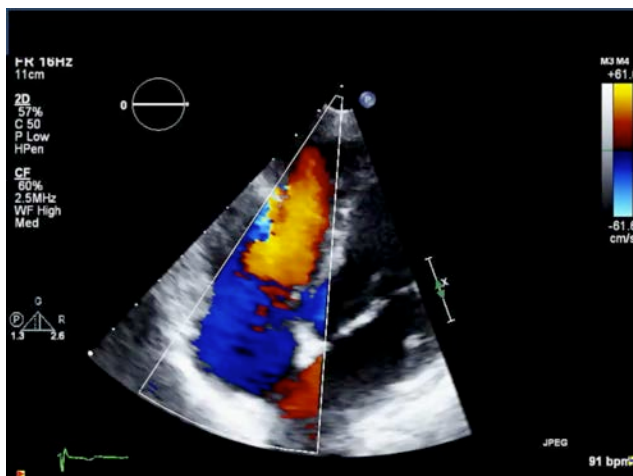
2

modified 4 chamber view at admission
several weeks earlier



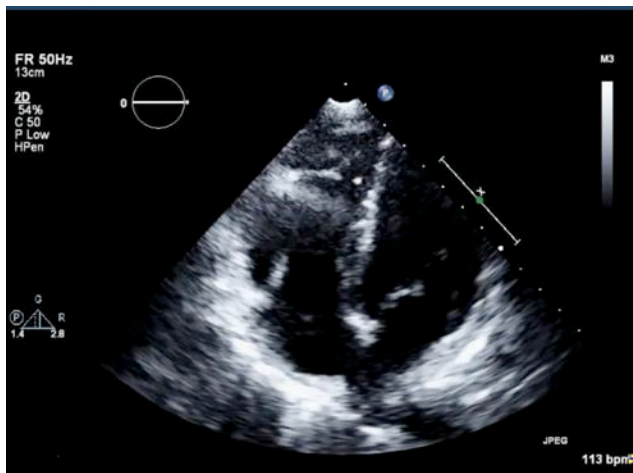
MAZANKOWSKI
ALBERTA HEART INSTITUTE

3

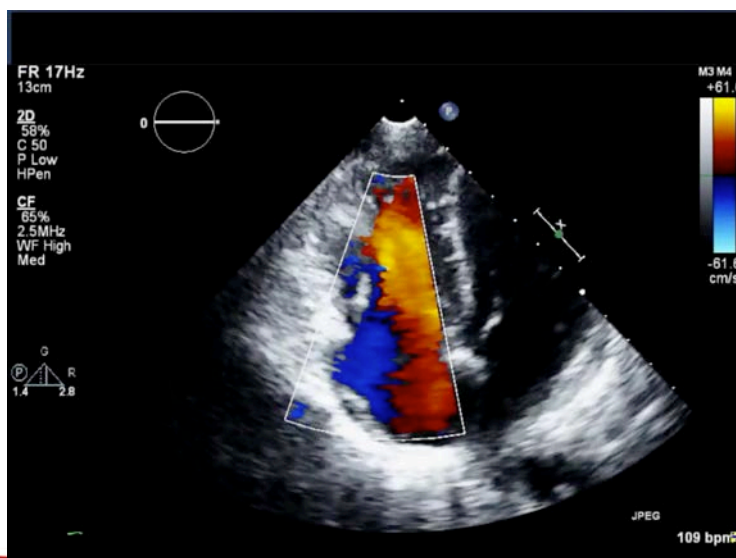


4

2 weeks later



5

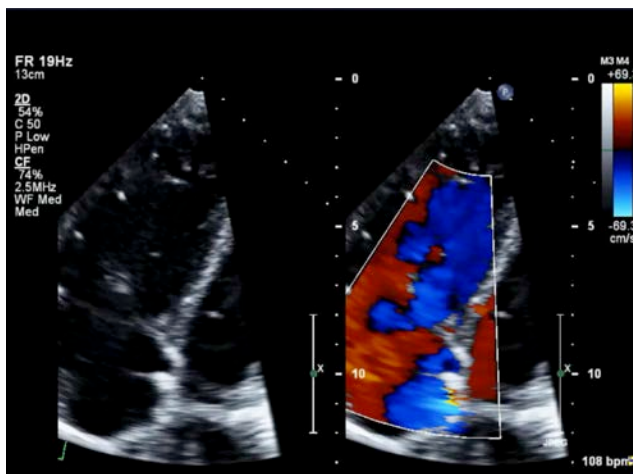


6

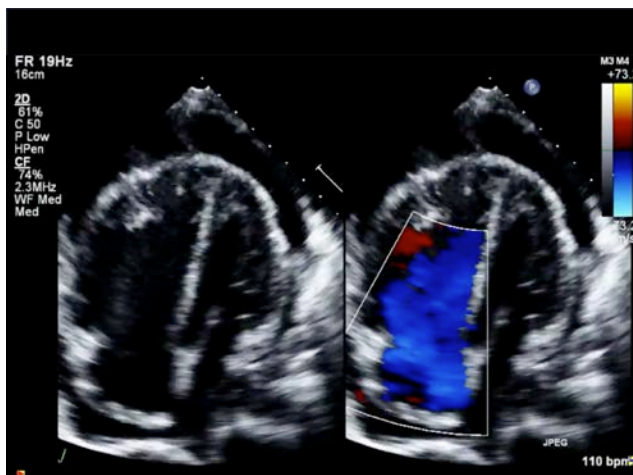
4 chamber view after surgery



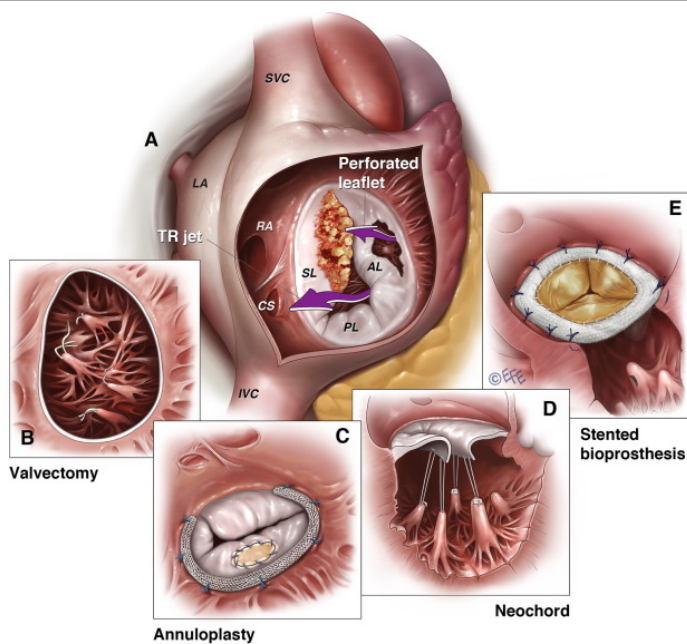
7



8



9



Yong MS et al 2016
Int J Cardiol

10

Tricuspid Valvectomy

High risk of reinfection

Concerns regarding medication compliance

Active IV drug users

ESG guidelines recommend valvectomy only in extreme cases followed by valve replacement once the infection has been cured

