

# Cases in coronary artery disease Tips from the experts

## Echo Hawaii 2020

**Gregory M Scalia**  
**Professor of Medicine**  
**Director of Echocardiography**  
**The Prince Charles Hospital**  
M.B.B.S.(Hons), M.Med.Sc., F.R.A.C.P., F.A.C.C.,  
F.C.S.A.N.Z., F.A.S.E.

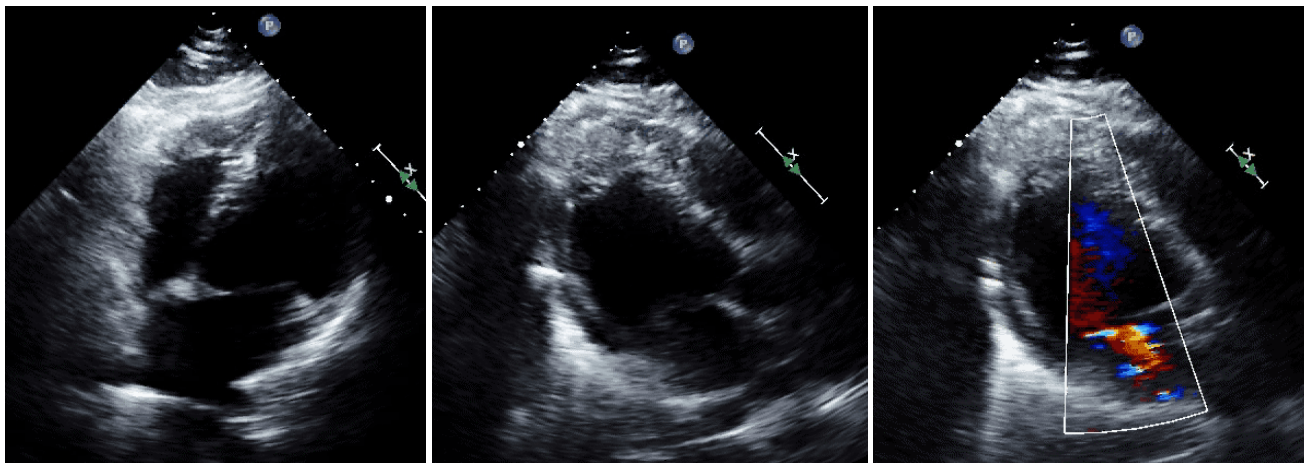
1

## Case 1

- 68 year old male
- Presents to regional center with STEMI
- Treated with lysis
- Transferred ventilated, febrile, tachycardic
- RUL consolidation

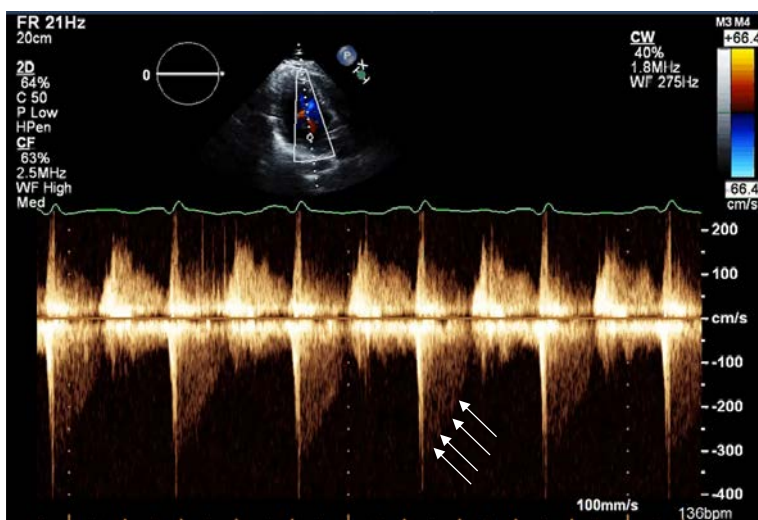
2

## On arrival 1900



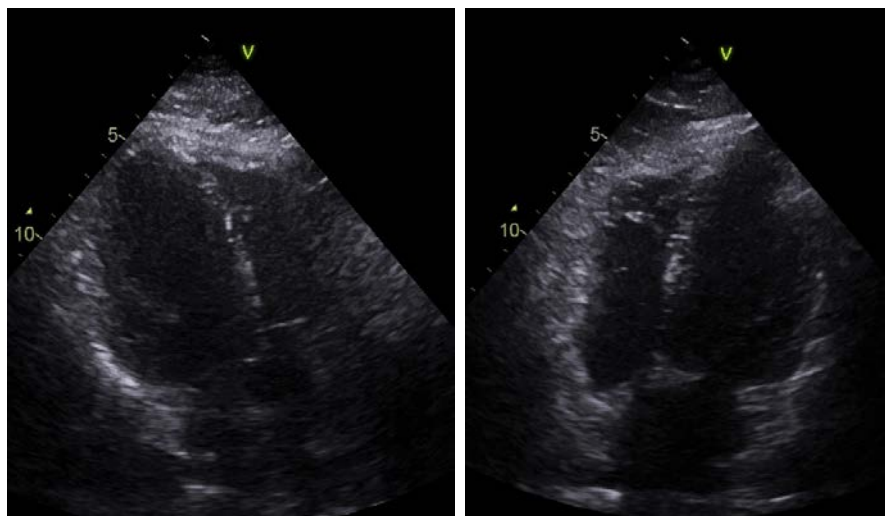
3

## On arrival 1900



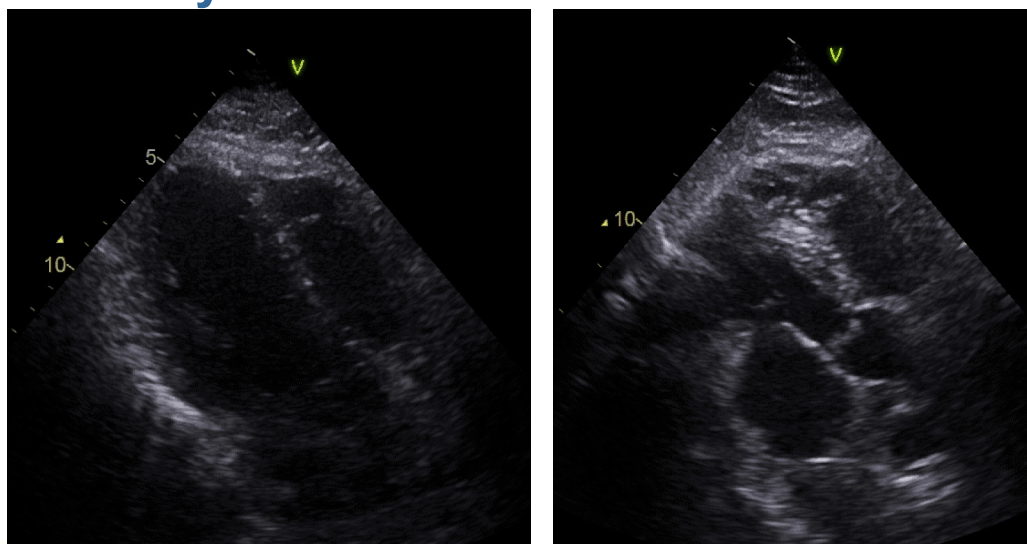
4

## The next day 0750



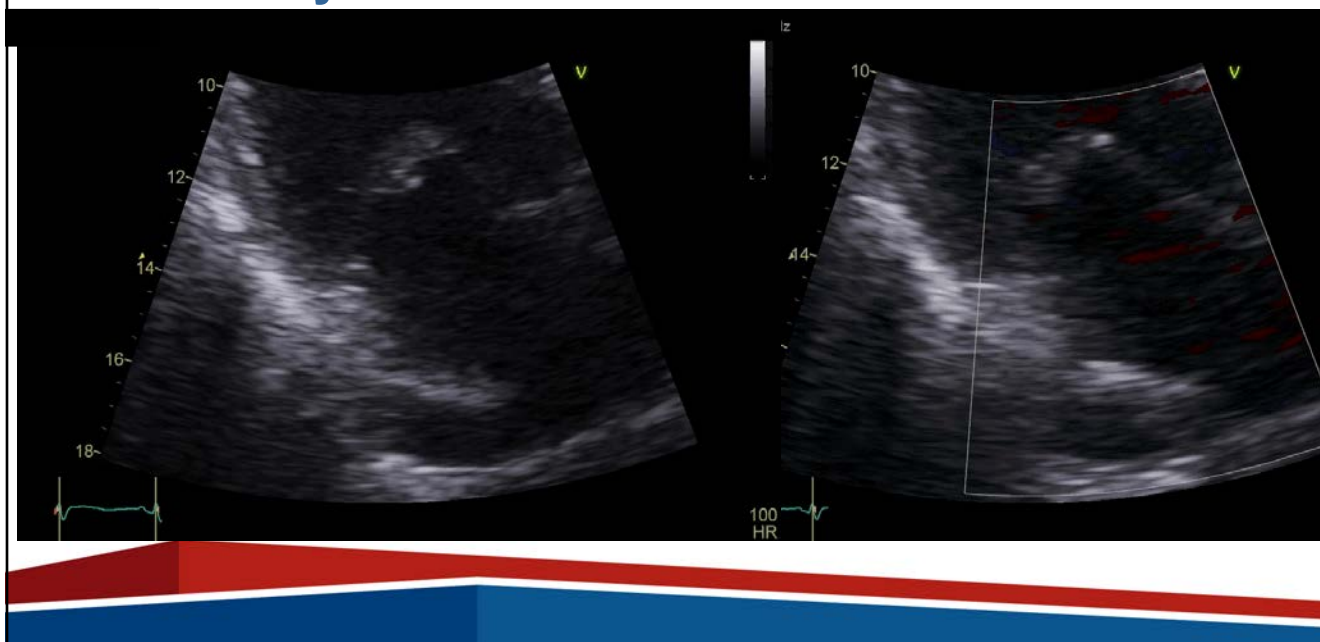
5

## The next day 0750



6

## The next day 0750



7

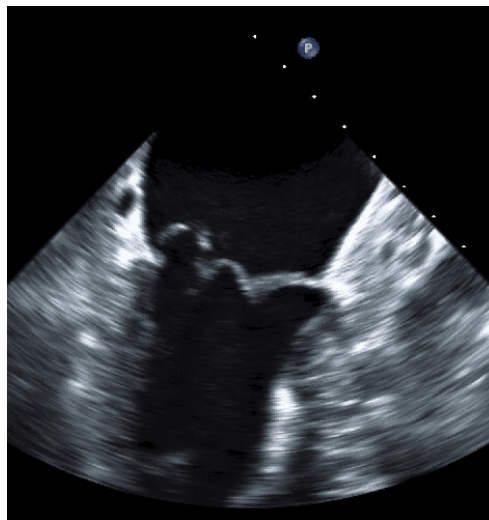
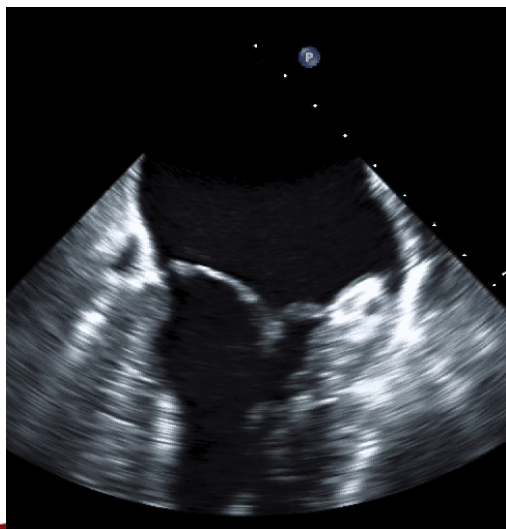
## Urgent TEE 0810



8

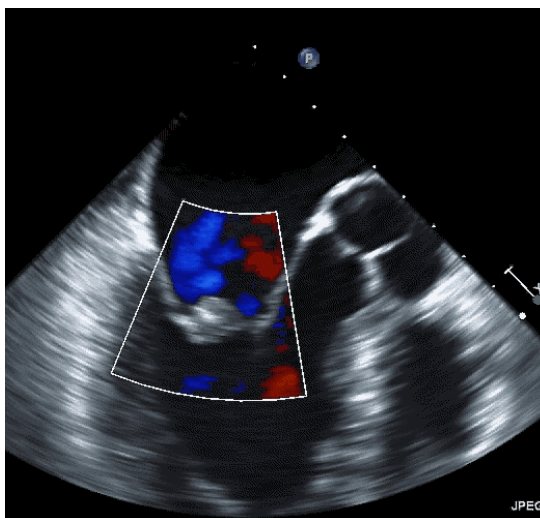
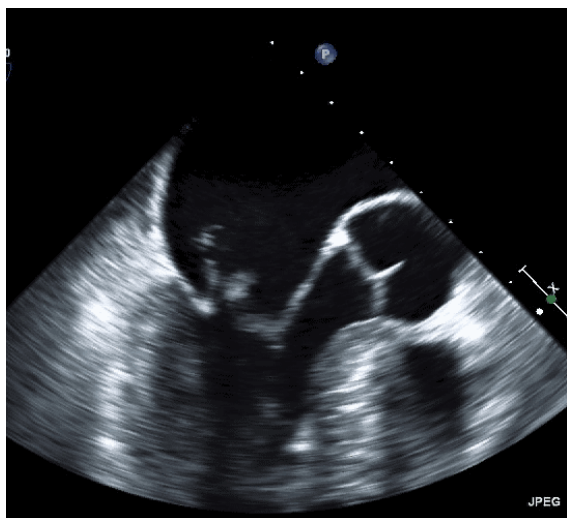


## Urgent TEE 0810



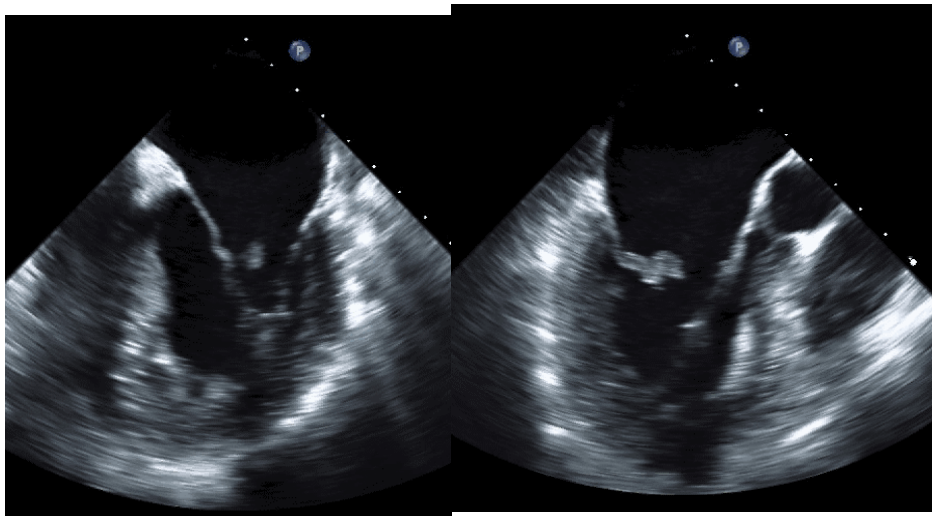
9

## Urgent TEE 0810



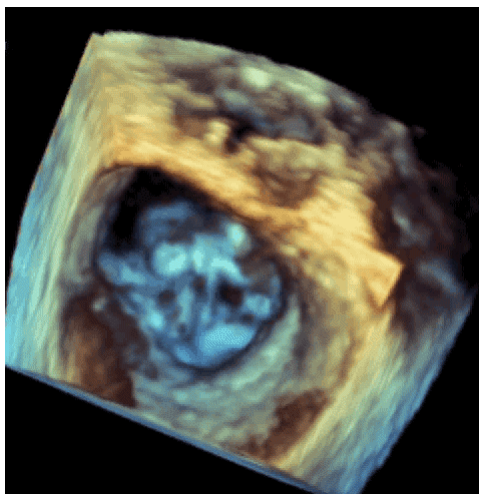
10

## Urgent OT under CPR...



11

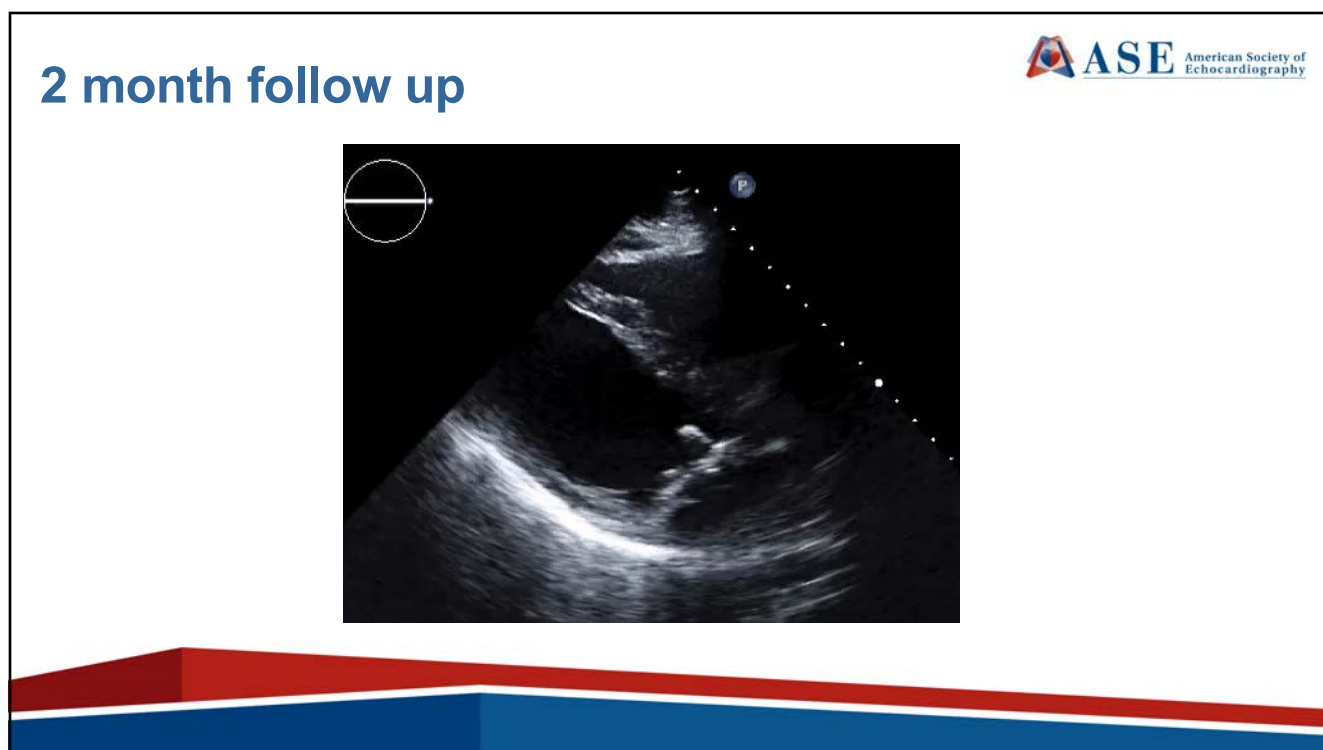
## OT under CPR0840



12



13



14

## Case 2 CTO misadventure



**78 male**

**Previous CABG with LIMA to CTO of LAD and PDA**

**Planned routine CTO to mid LAD/RCA 16<sup>th</sup> July**

**Acute lateral STEMI evening of 15 July**

**Settled with heparin and planned for CTO 23<sup>rd</sup> July**

**Cath lab**

**Opened LAD**

**Cannulated the LAD septal to gain retrograde access to PDA**

15

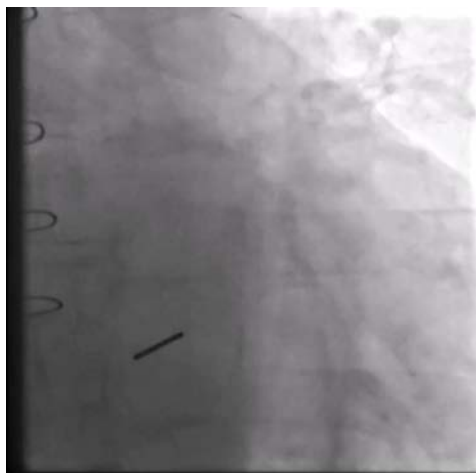
## Next angio



16



## Next angio



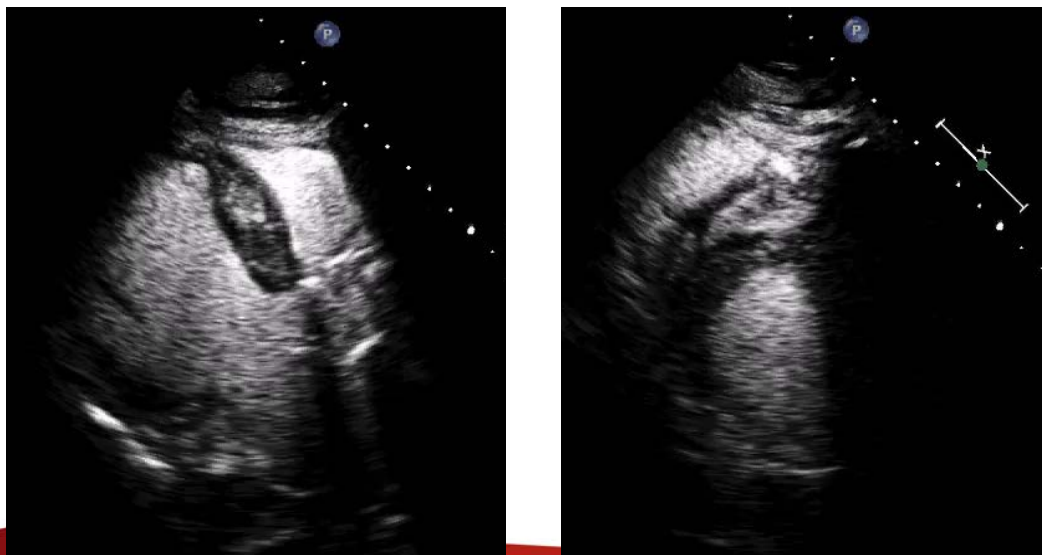
17

## Immediate Echo



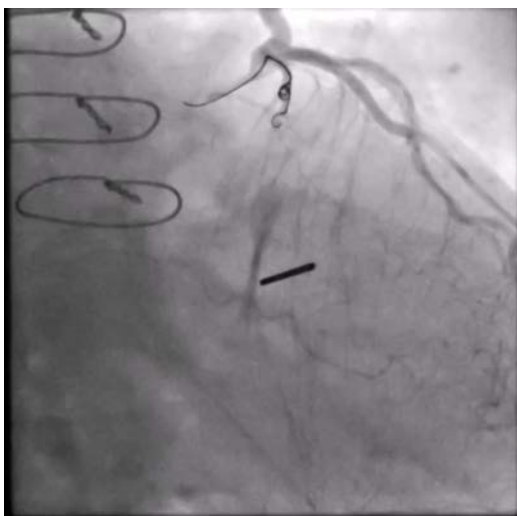
18

## Immediate Echo Contrast



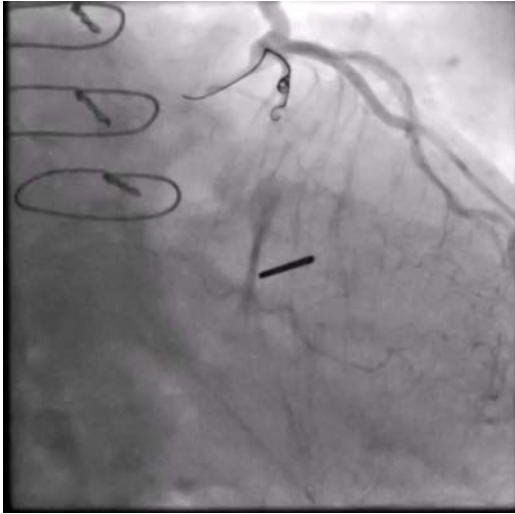
19

## Coiled



20

## Post coil



21

## Follow up Case 2



**Progressive renal failure and hypotension**  
**Poor outcome at 32 days**

22