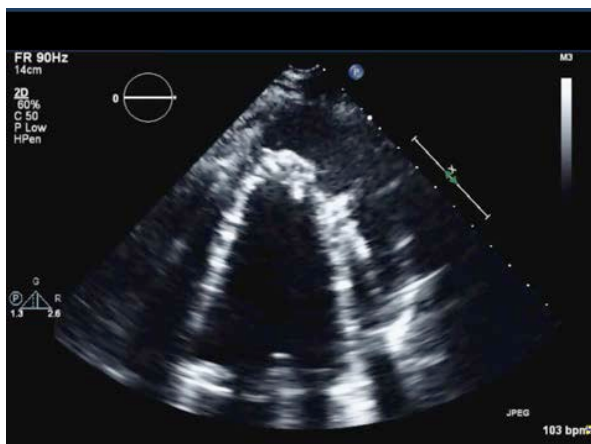


Unusual Course after Double Valve Replacement

BecherH case 1

1

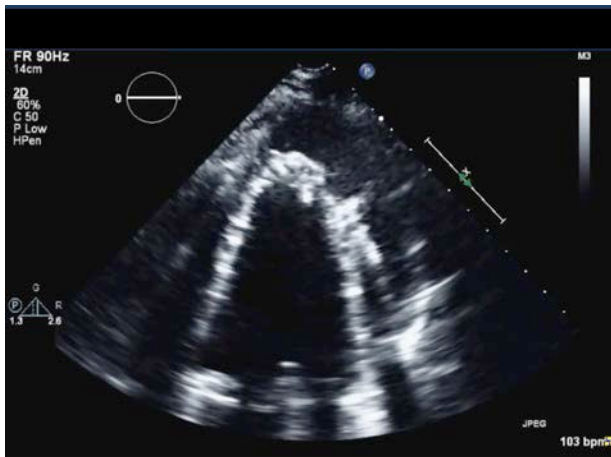
1st postop. TTE after mitral and aortic valve replacement complicated by laceration of the LV apex



apical
4 chamber view

2

1st postop. TTE after mitral and aortic valve replacement complicated by laceration of the LV apex requiring suture



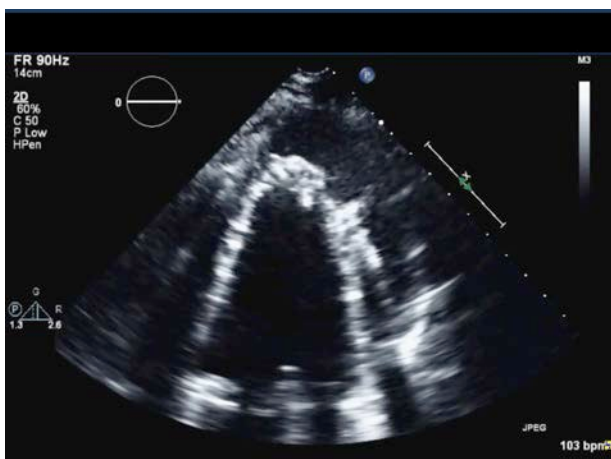
What is the best approach in this situation?

- 1. TEE
- 2. Color Doppler
- 3. Contrast echocardiography
- 4. Chest CT

apical
4 chamber view

3

1st postop. TTE after mitral and aortic valve replacement complicated by laceration of the LV apex requiring suture



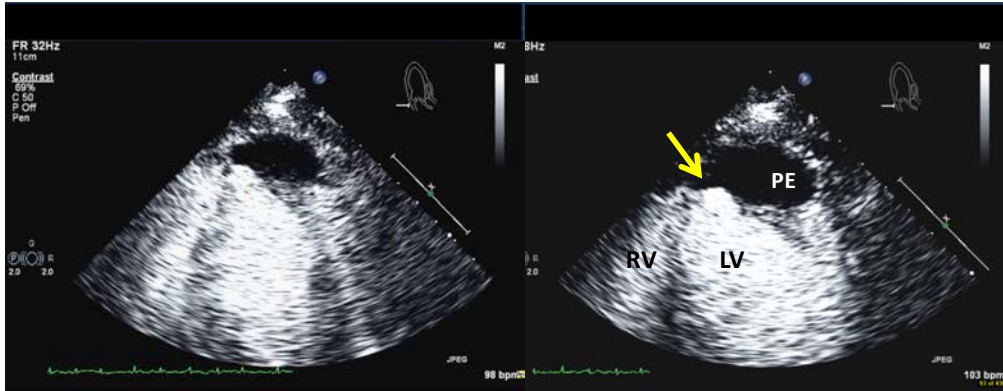
What is the best approach in this situation?

- 1. TEE
- 2. Color Doppler
- 3. Contrast echocardiography
- 4. Chest CT

apical
4 chamber view

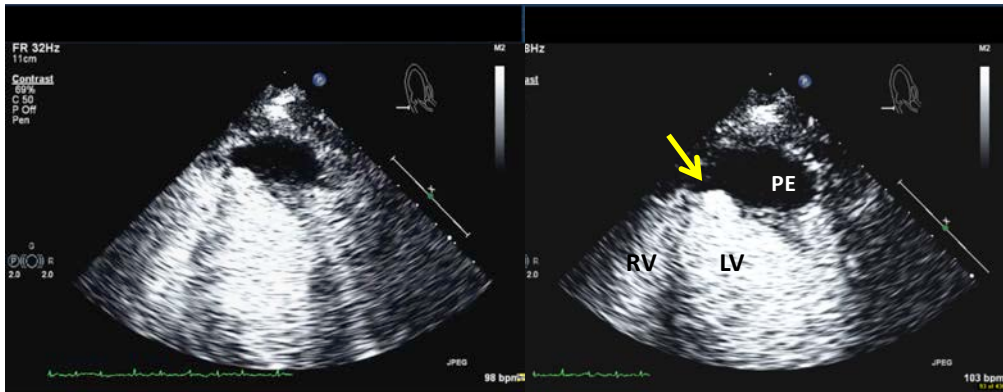
4

injection of 1 ml diluted Definity bolus (0.5 ml in 10 ml saline)



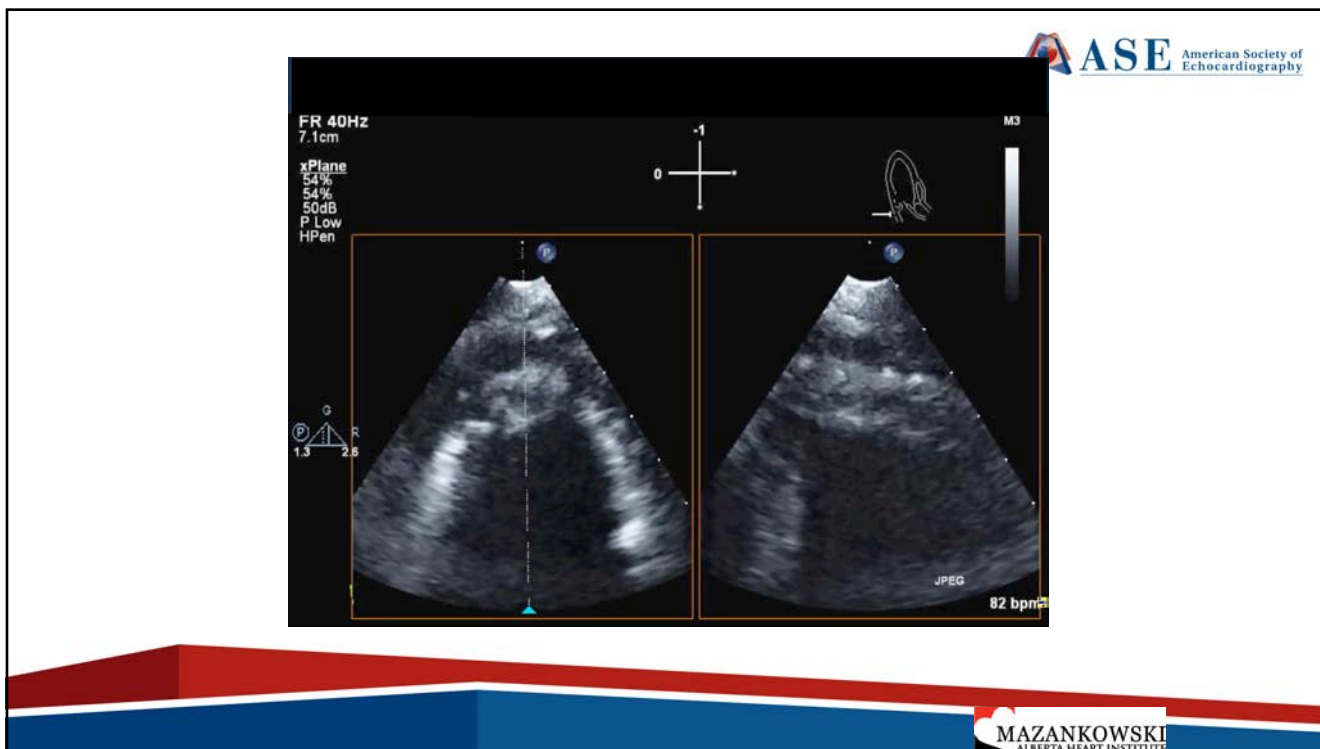
5

injection of 1 ml diluted Definity bolus (0.5 ml in 10 ml saline)

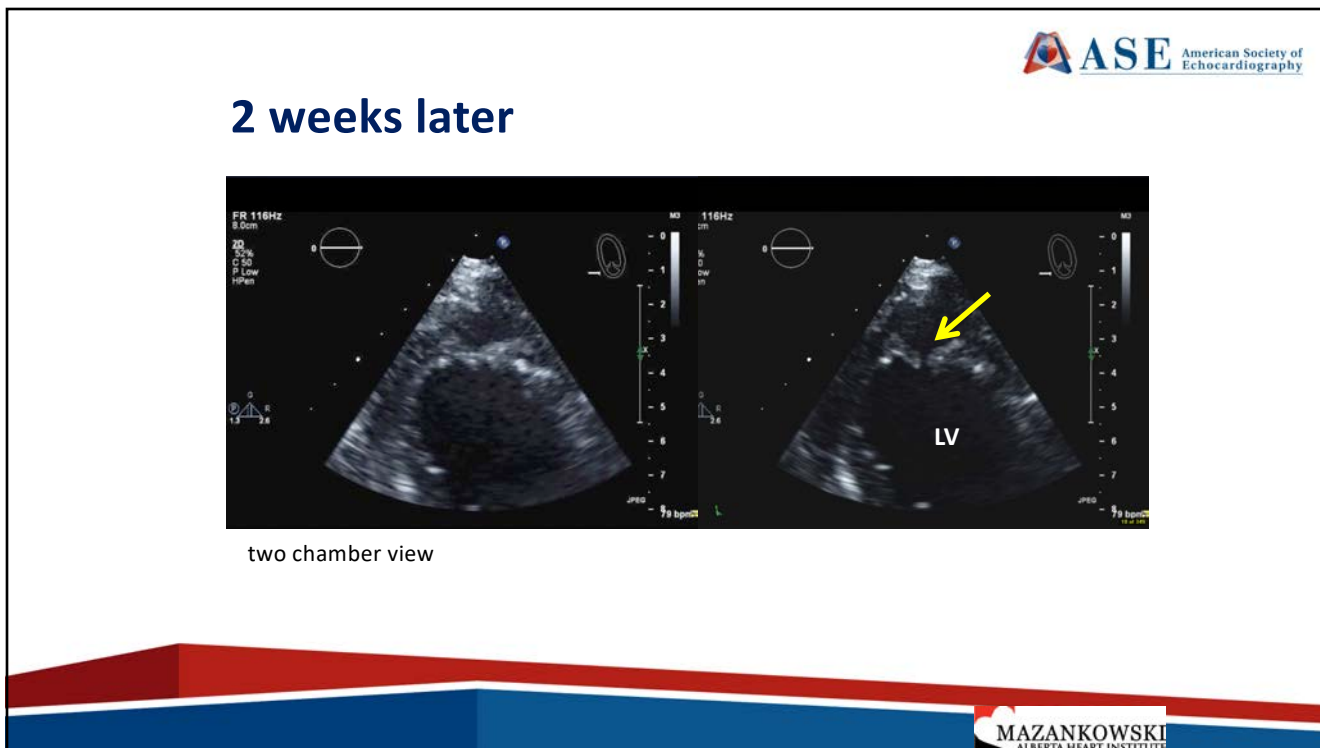


The patient refused another surgery,
but agreed to come for a F/U echocardiogram

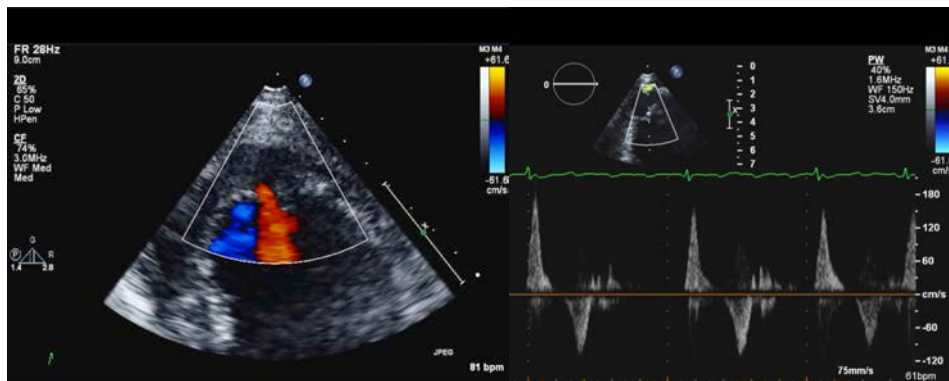
6



7

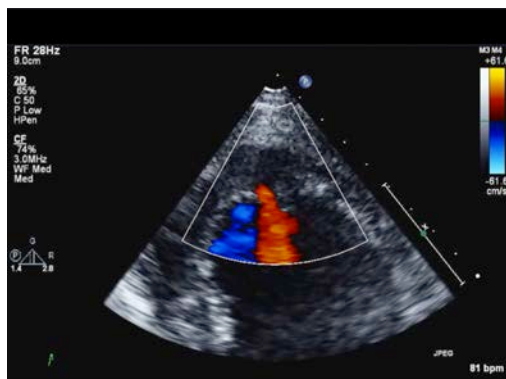


8



9

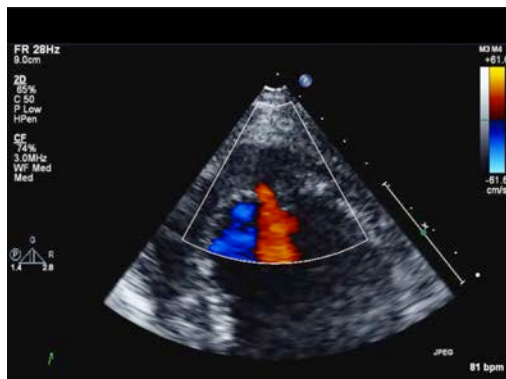
Does the patient need another contrast echo?



- 1. No
- 2. Yes

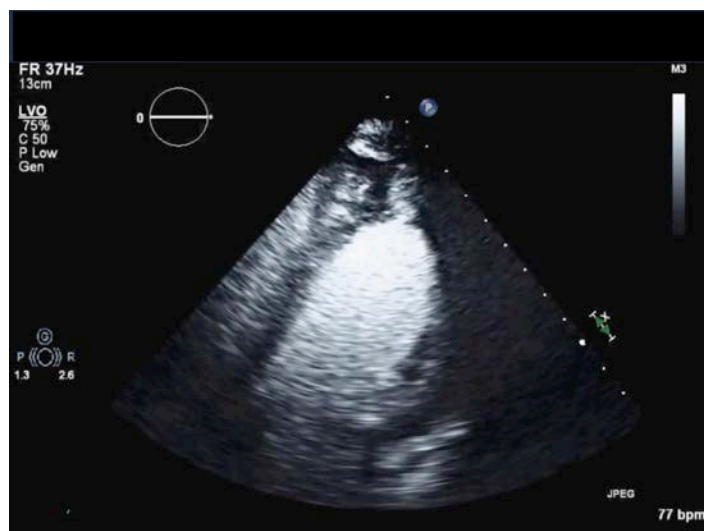
10

Does the patient need another contrast echo?

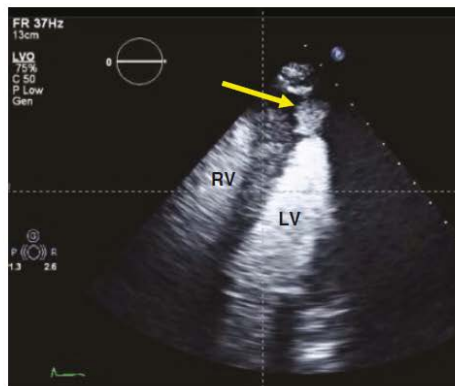
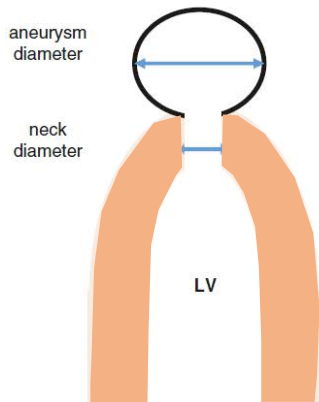


- 1. No
- 2. Yes

11



12



Pseudo-aneurysm

Narrow neck

Neck diameter/aneurysm diameter <50%

Covered by pericardium

Systolic flow into the aneurysm

Early diastolic flow out of the aneurysm

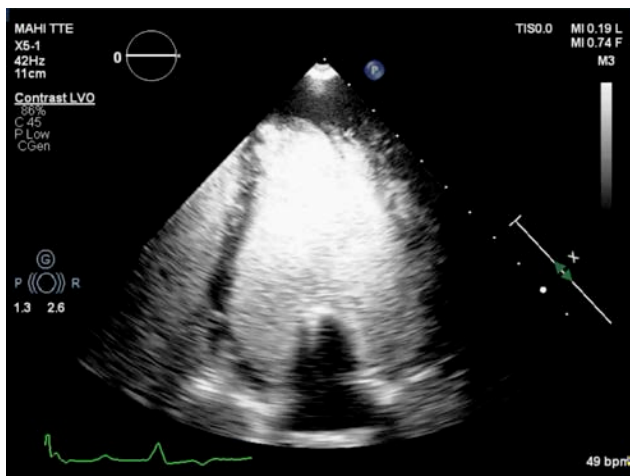


'Looks odd'

BecherH loop2

1

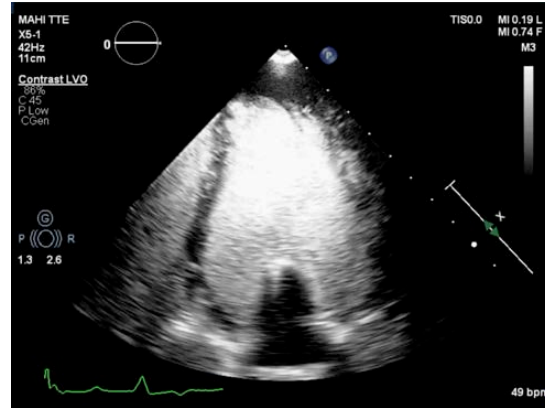
4 chamber view



2

What do you see?

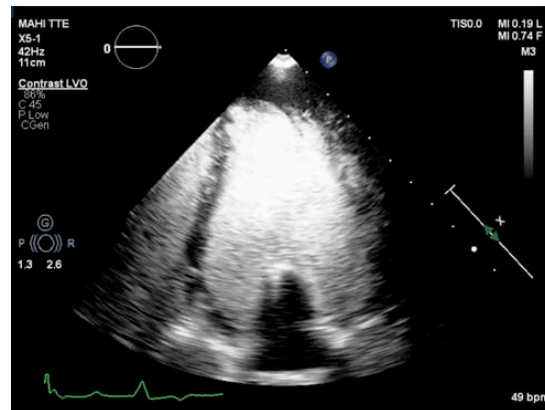
1. prolapsing calcified LA thrombus
2. Tumour of the mitral valve
3. Myxoma prolapsing into LV
4. Something else



3

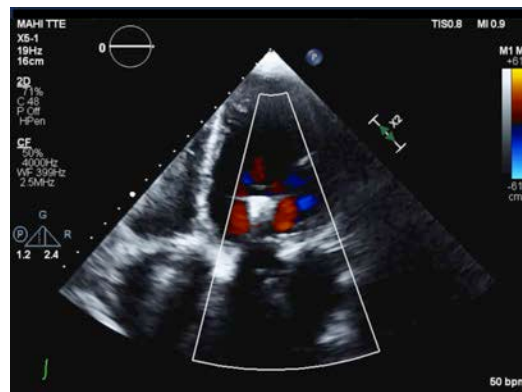
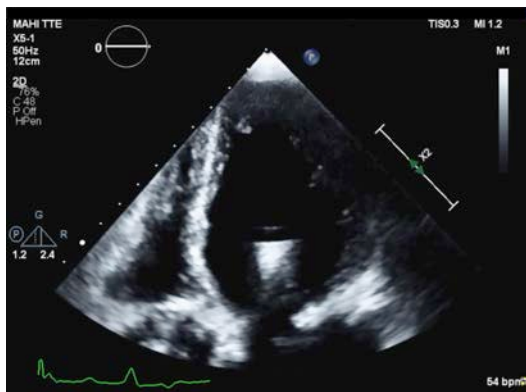
What do you see?

1. Prolapsing calcified LA thrombus
2. Tumour of the mitral valve
3. Myxoma prolapsing into LV
4. **Something else**

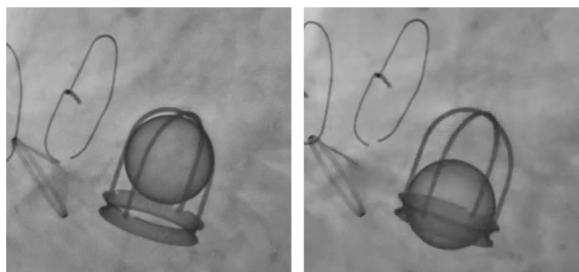


4

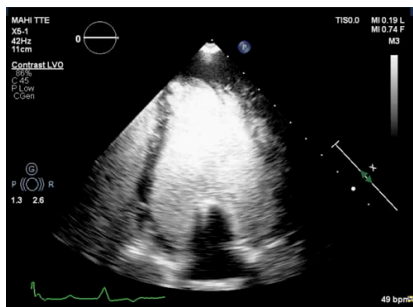
4 chamber view



5



Starr-Edwards Caged-Ball Mitral Valve:
Still Working after 41 Years
Yalkinkaya A et al. Tex Heart Inst J 2016



6