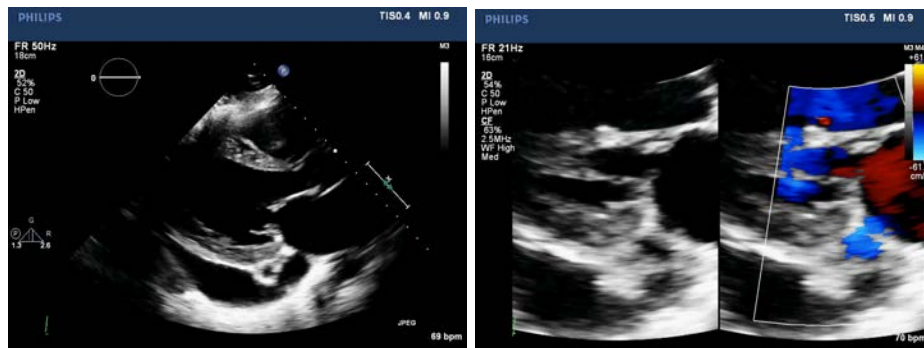


Case Presentation

- 67 yo female with history of diabetes mellitus and hypertension
- Referred for echocardiography after experienced a single episode of PAF
- Denies dyspnea, chest pain, exercise intolerance, etc.

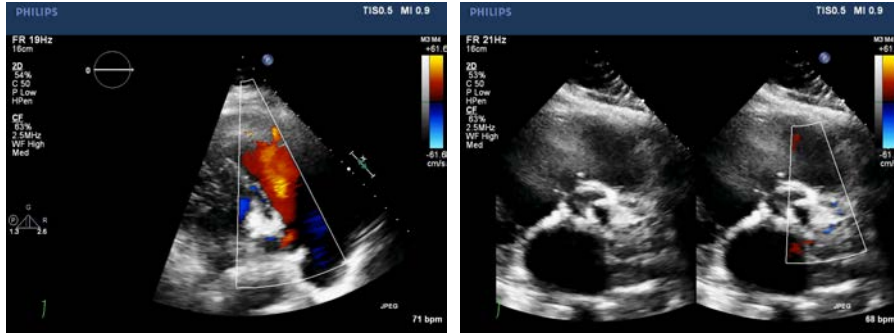
1

TTE



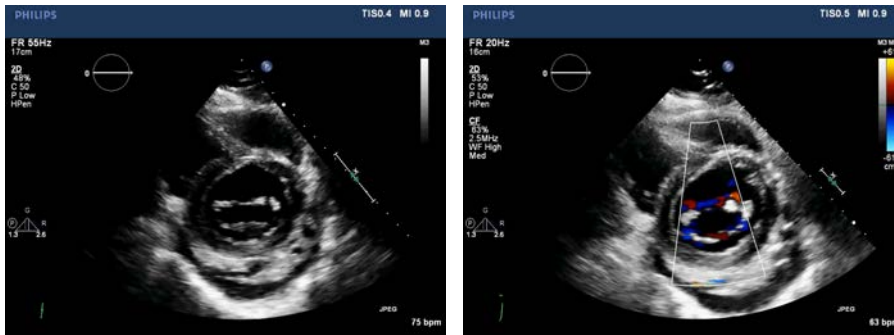
2

TTE



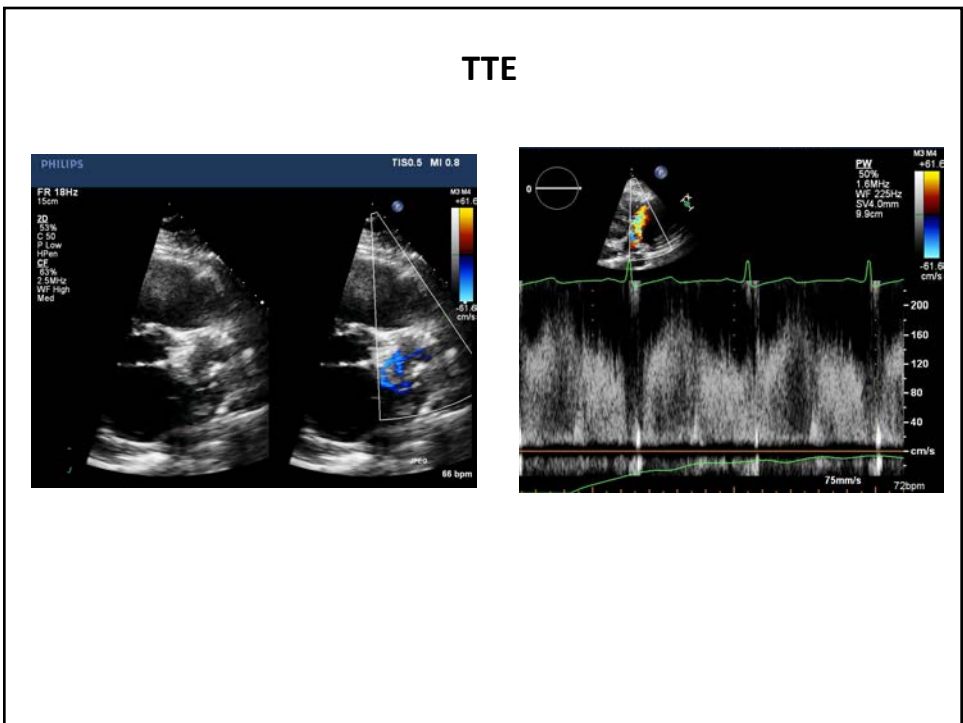
3

TTE



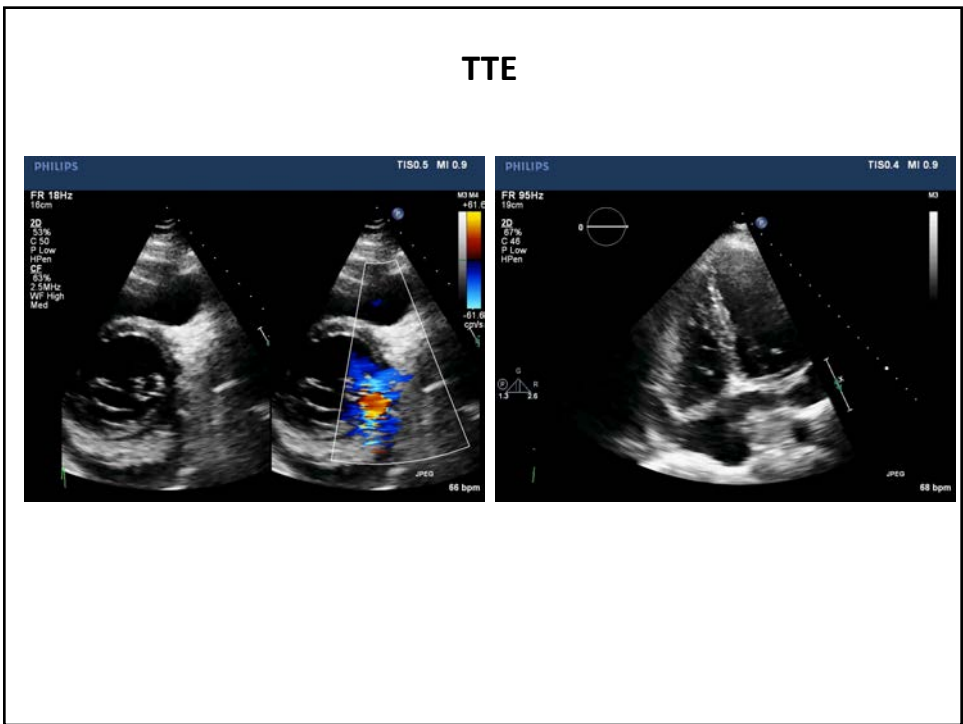
4

TTE



5

TTE



6

Based on the findings, the most likely diagnosis in this patient is:

- A. ALCAPA
- B. Complex pseudoaneurysm
- C. LAD to PA fistula
- D. LCx to coronary sinus fistula
- E. Kawasaki's disease

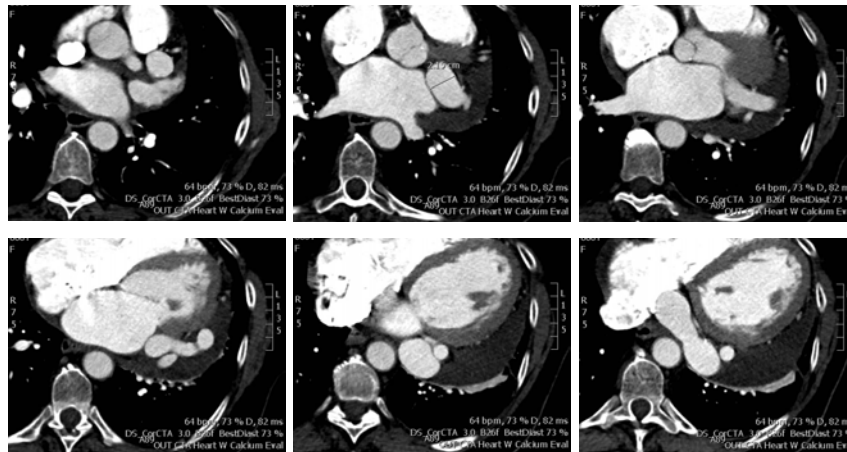
7

Based on the findings, the most likely diagnosis in this patient is:

- A. ALCAPA
- B. Complex pseudoaneurysm
- C. LAD to PA fistula
- D. LCx to coronary sinus fistula
- E. Kawasaki's disease

8

CT Coronary Angiogram



9

Coronary Angiogram



10

On transthoracic echocardiography, the degree of shunt can be determined by measurement of flow in which two locations?

- A. RVOT and LVOT
- B. Tricuspid annulus and LVOT
- C. RVOT and Mitral annulus
- D. LVOT and coronary sinus os
- E. None of the above

11

On transthoracic echocardiography, the degree of shunt can be determined by measurement of flow in which two locations?

- A. RVOT and LVOT
- B. Tricuspid annulus and LVOT
- C. RVOT and Mitral annulus
- D. LVOT and coronary sinus os
- E. None of the above

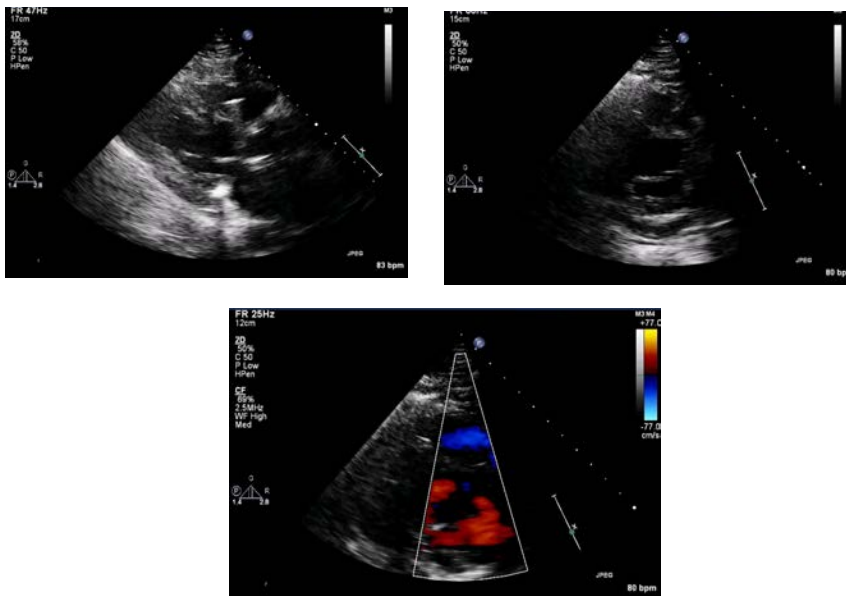
12

New Case

- Middle-aged man, no known history presents to the ED with witnessed SCD - resuscitated
- Has anterior mid-line thoracotomy
- Emergent POC echocardiogram performed

13

TTE



14

Based on the limited data shown, is the likely cause for the color Doppler abnormality?

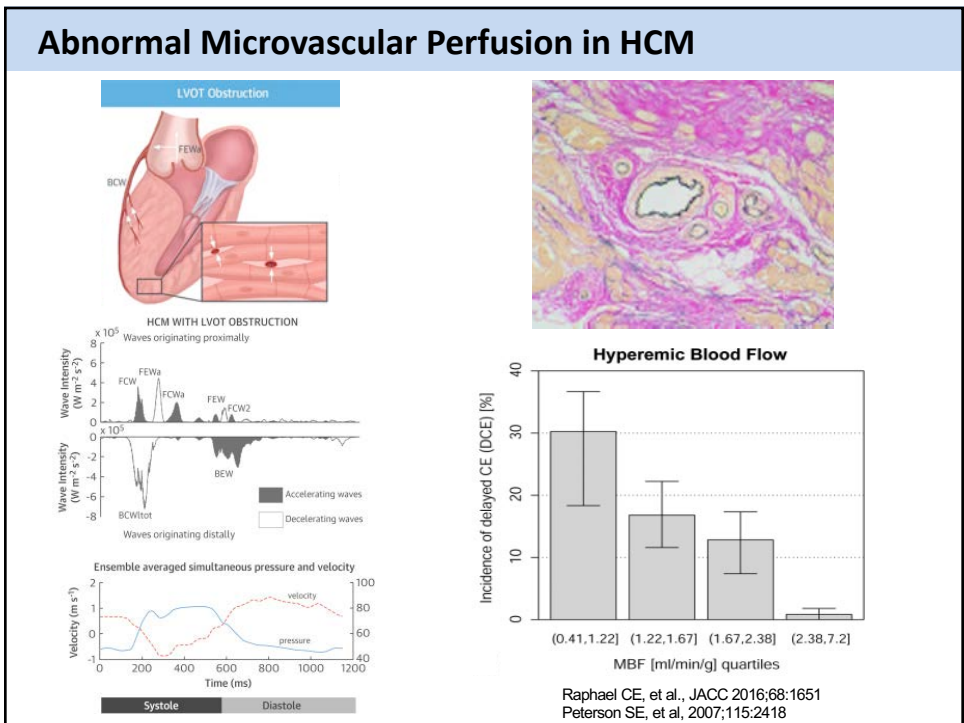
- A. Subaortic membrane
- B. HCM s/p myectomy
- C. Perivalvular AI
- D. VSD
- E. Persistent left SVC

15

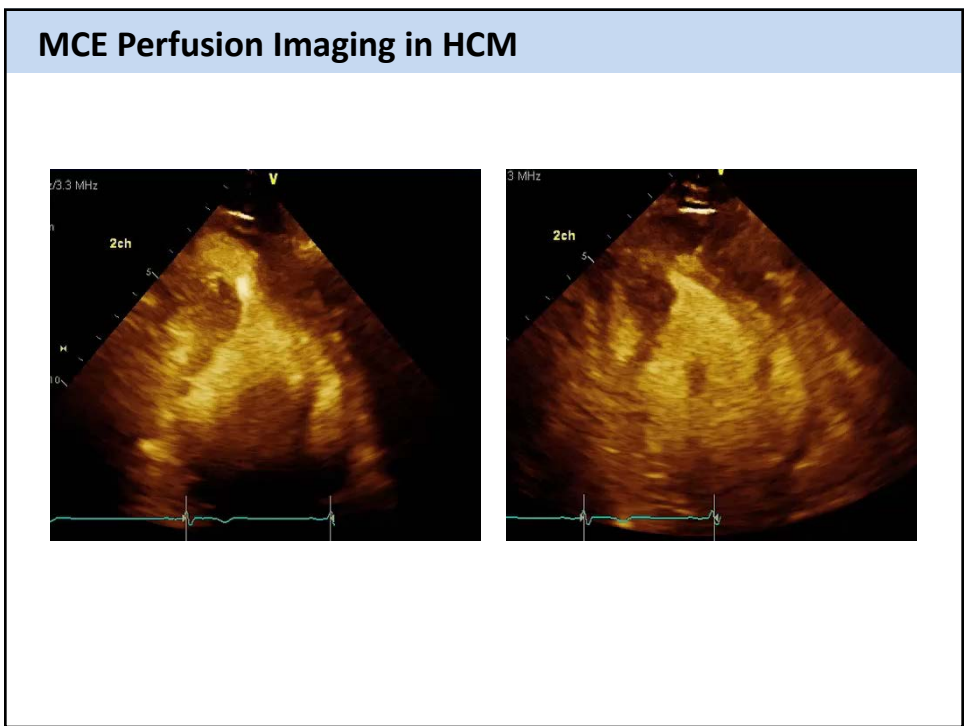
Based on the limited data shown, is the likely cause for the color Doppler abnormality?

- A. Subaortic membrane
- B. HCM s/p myectomy**
- C. Perivalvular AI
- D. VSD
- E. Persistent left SVC

16




17




18

MCE Perfusion Imaging in HCM

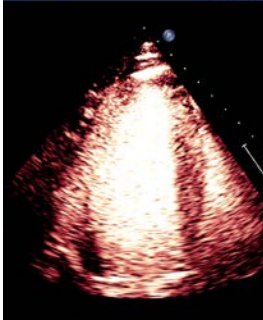
**Apical HCM
Color Doppler**



**MCE Perfusion
Intermediate MI**



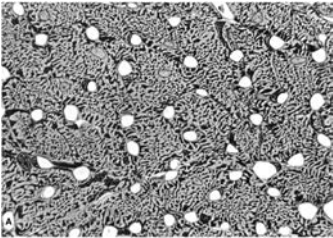
**MCE Perfusion
Low MI**



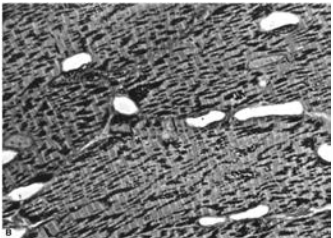
19

Microvascular Maladaptation to Aferload

Normal




Hypertensive LVH

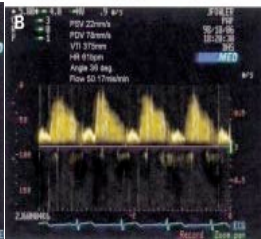


Amann K,
Kidney Intl
1998;54:S78

A



B



Hildick-Smith D, *Heart* 2000;84:383

20