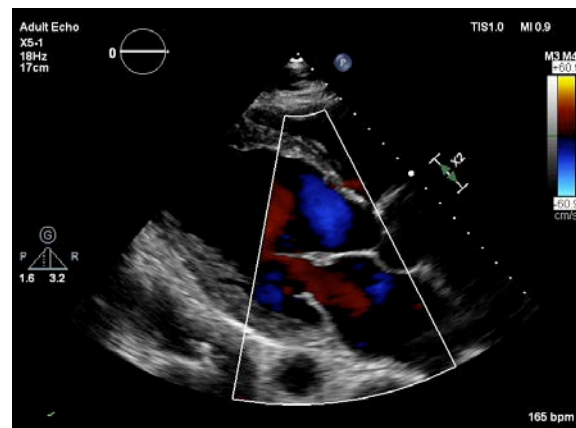
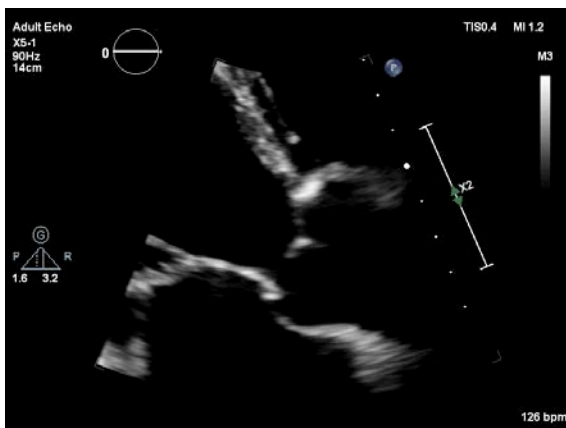


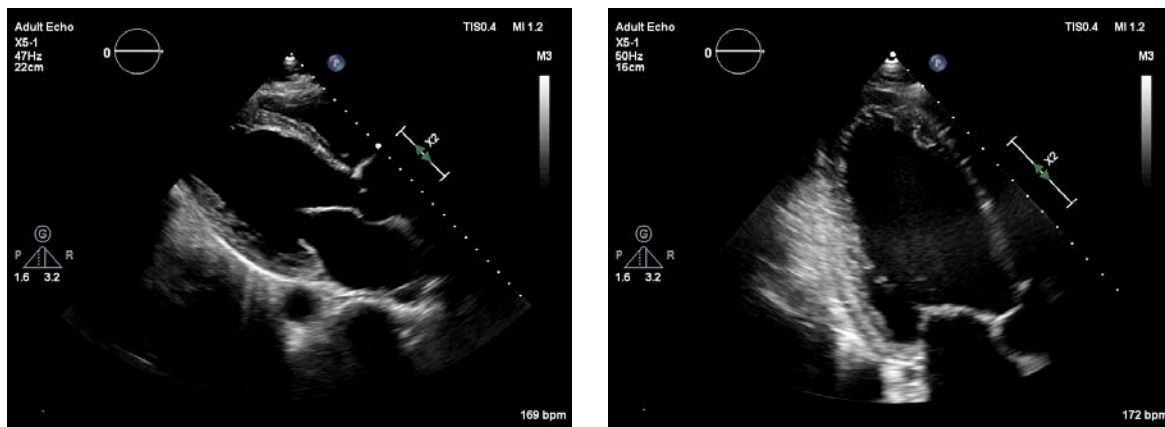
# Hemo Cases

Anthony DeMaria

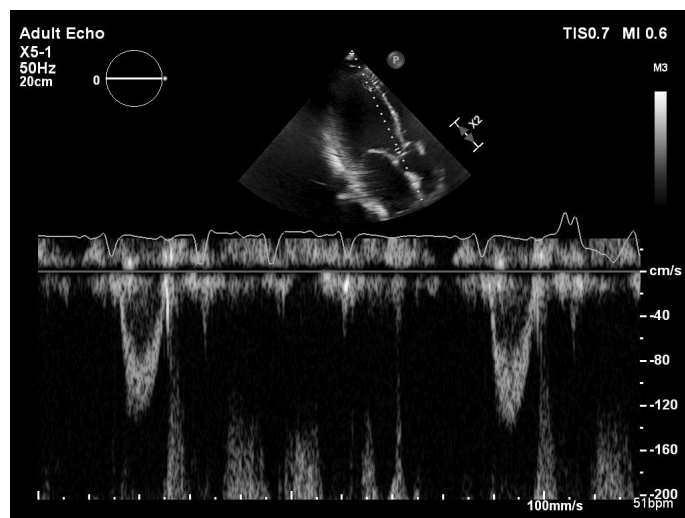
1



3



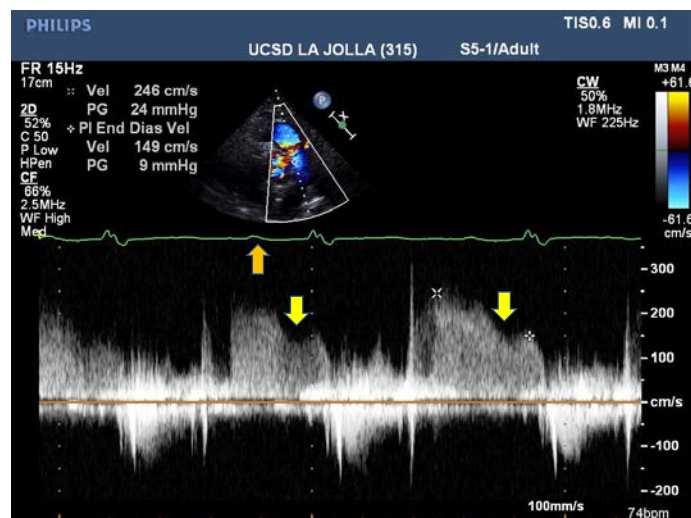
4



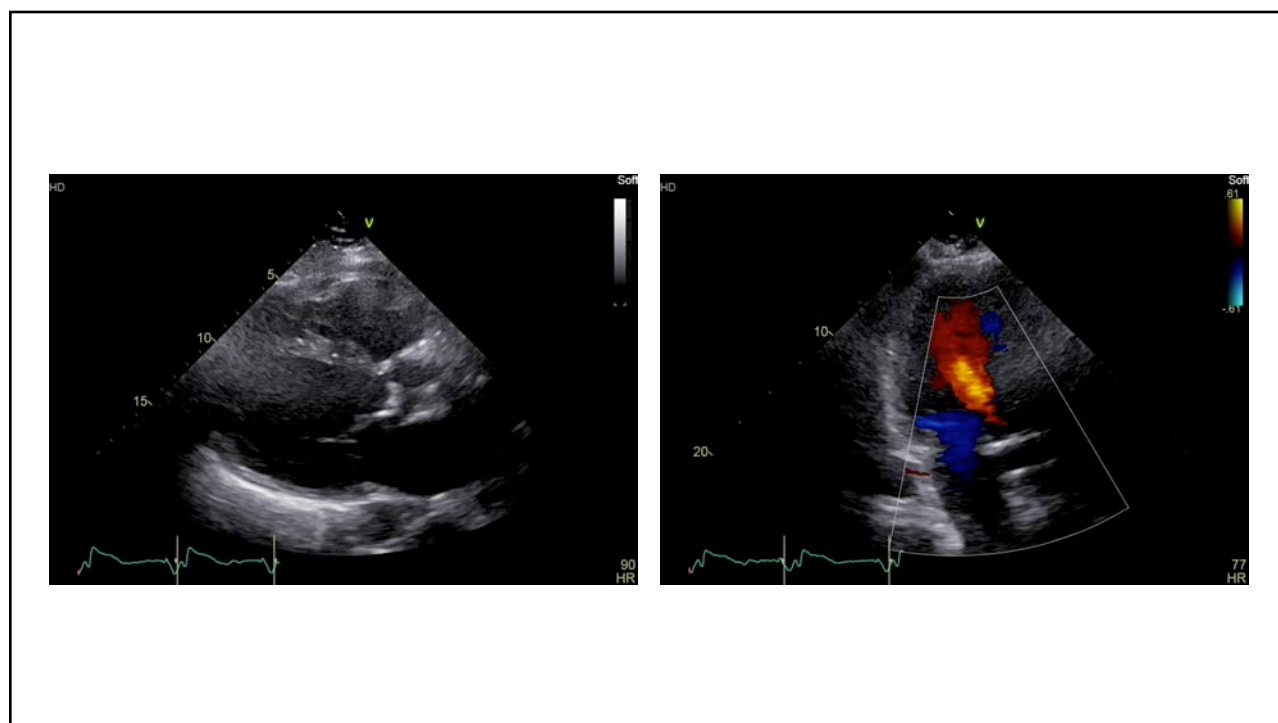
5

7

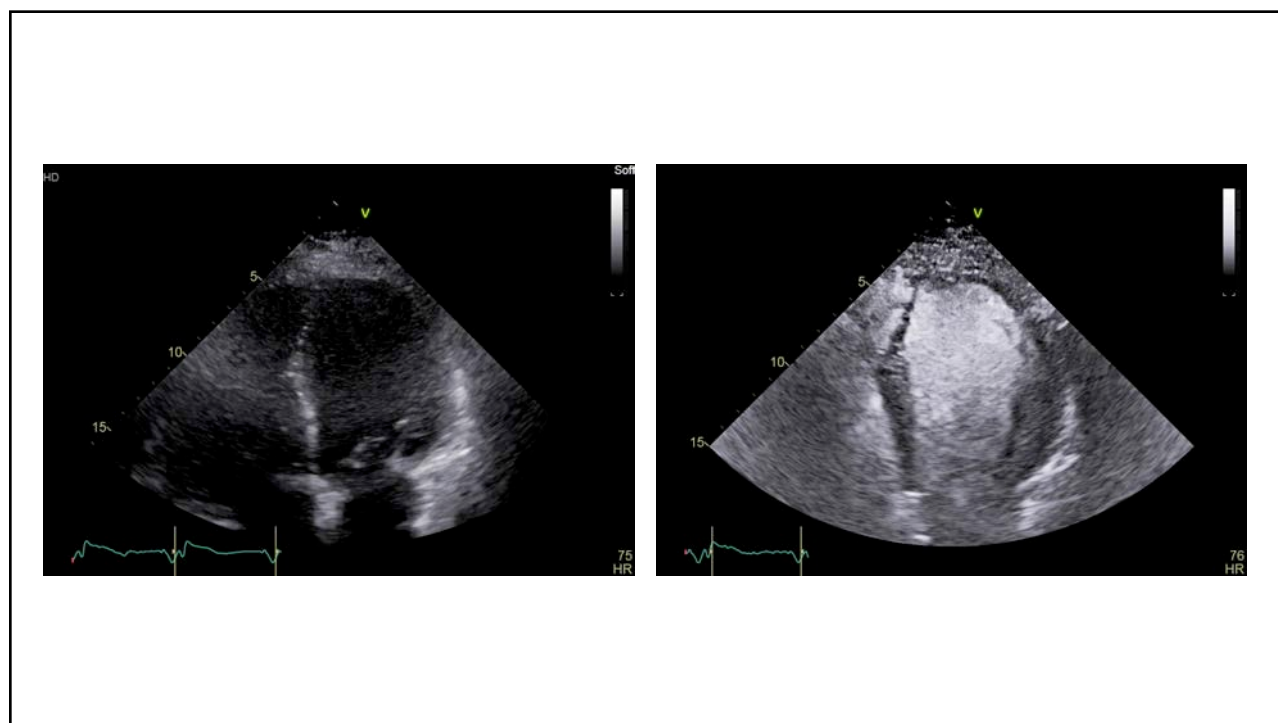
## Pulmonic Regurg Notch Due to Atrial Contraction



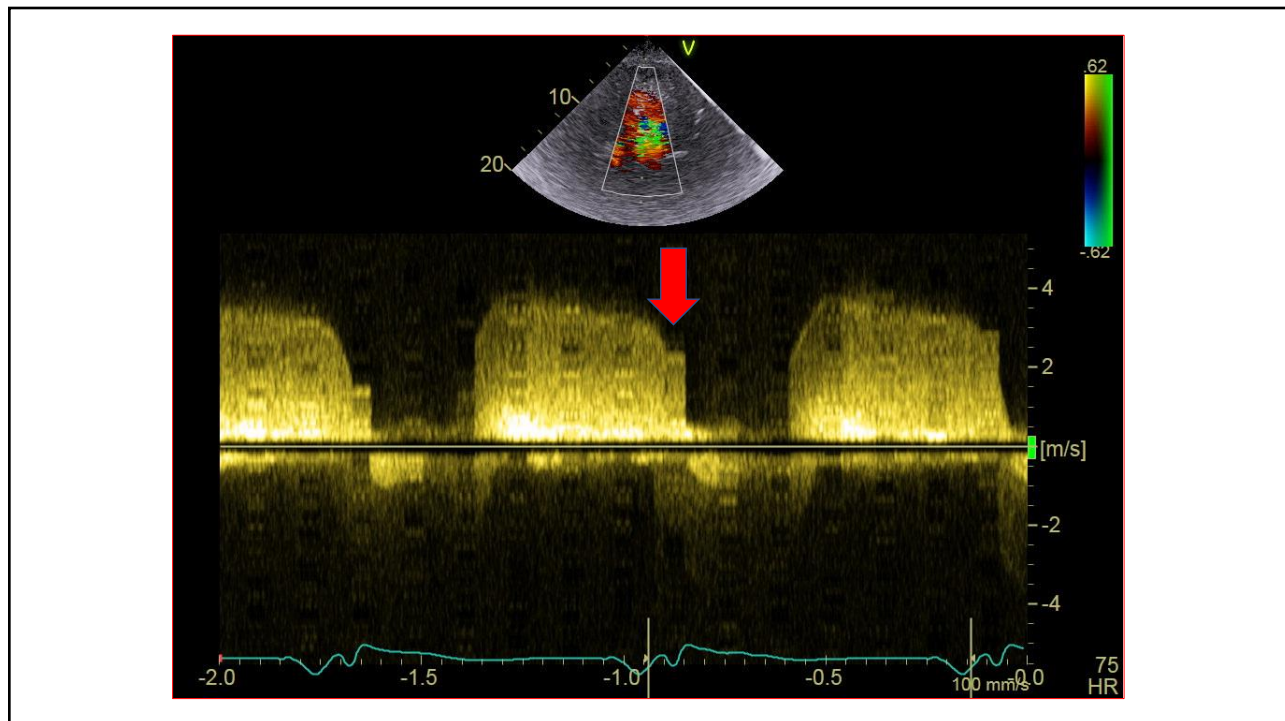
8



9



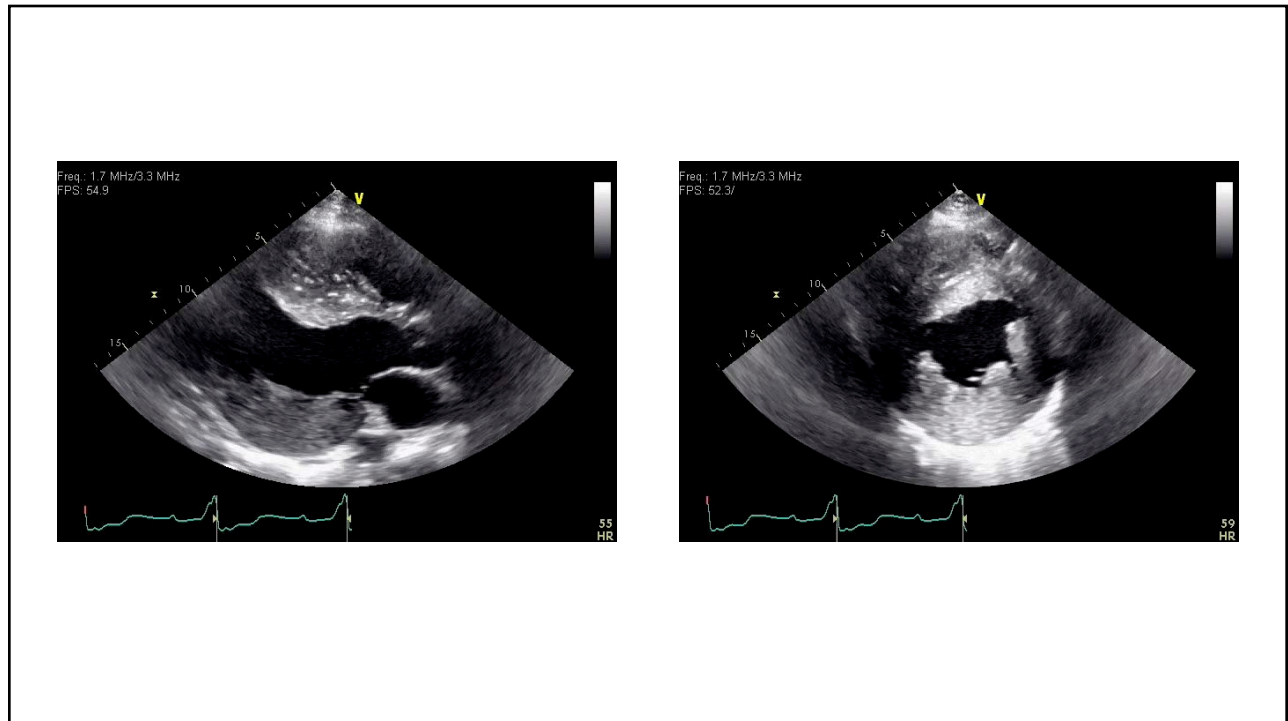
10



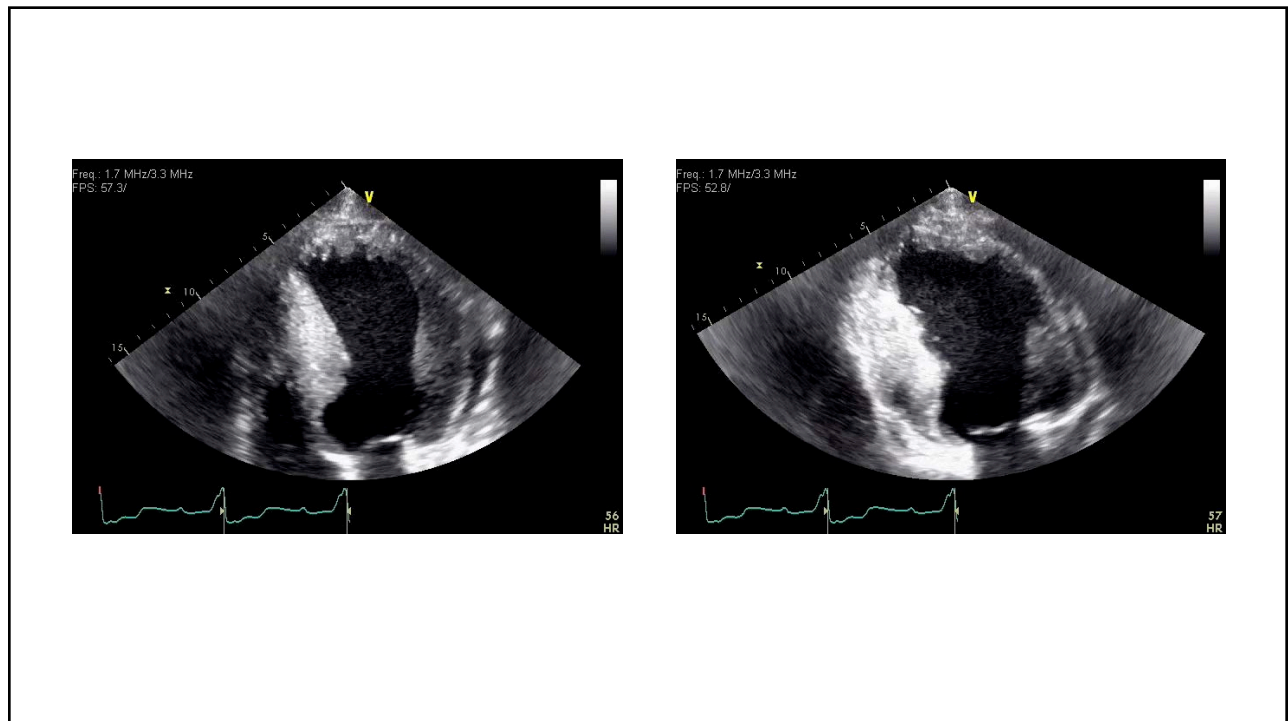
12

18 yo male with abnormal ECG

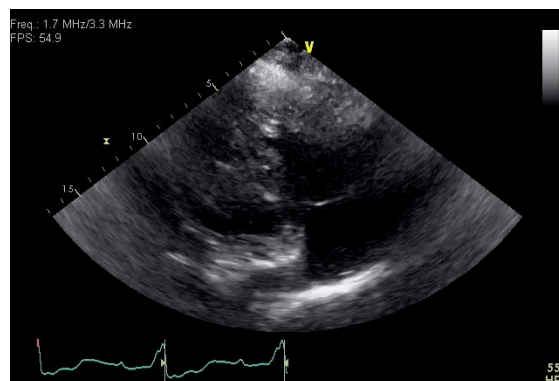
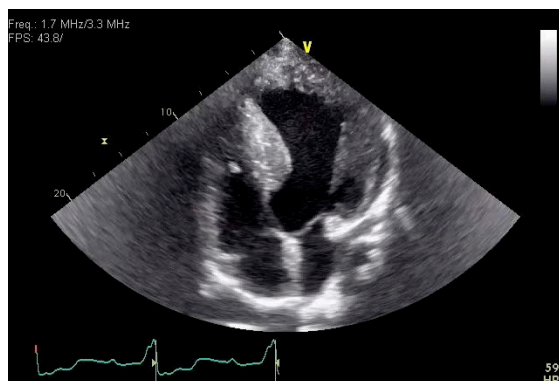
14



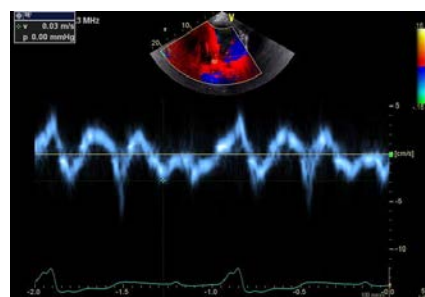
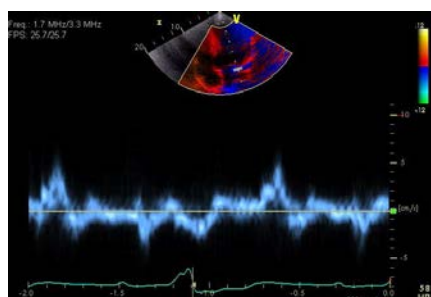
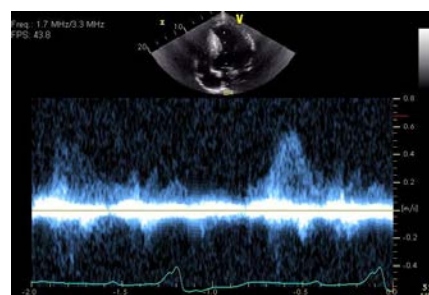
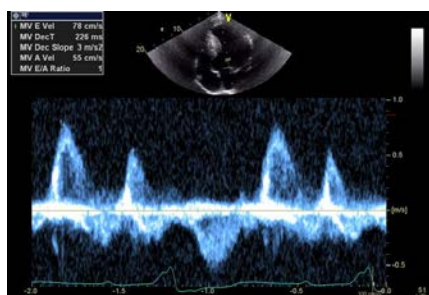
15



16



17



18

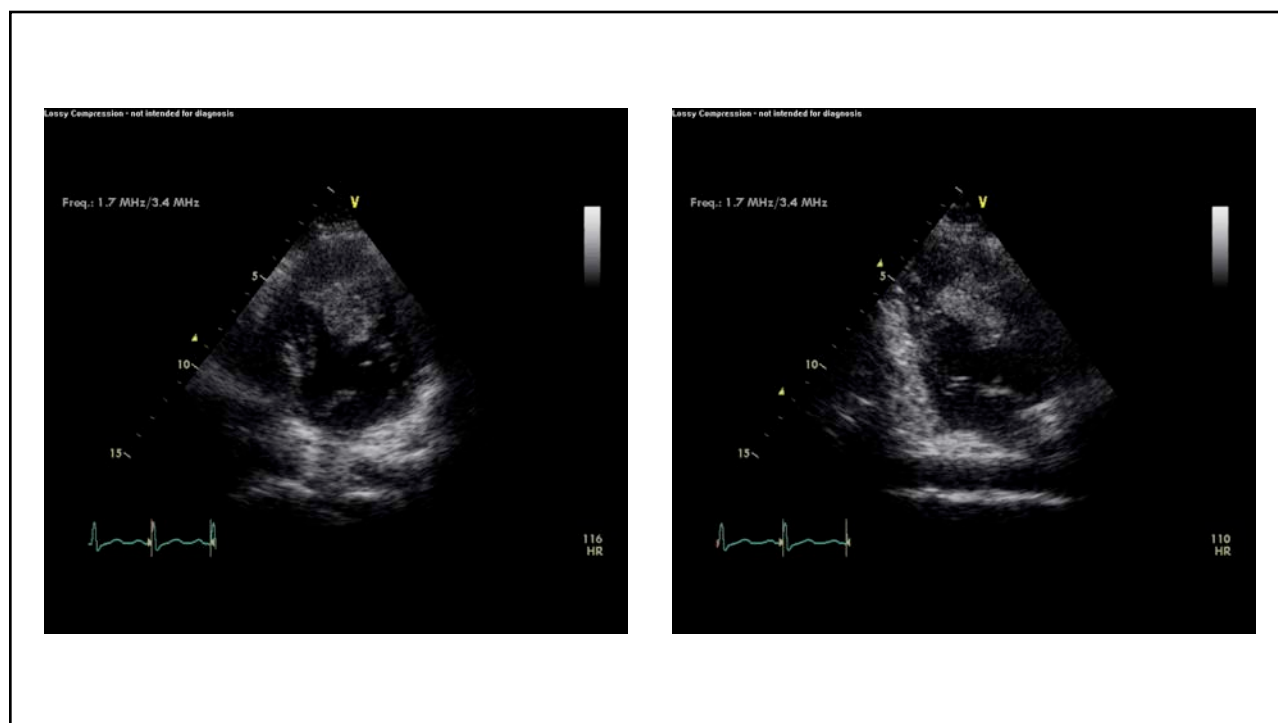
A 22 year old female is admitted for malaise, myalgias, and questionable seizures

55



56

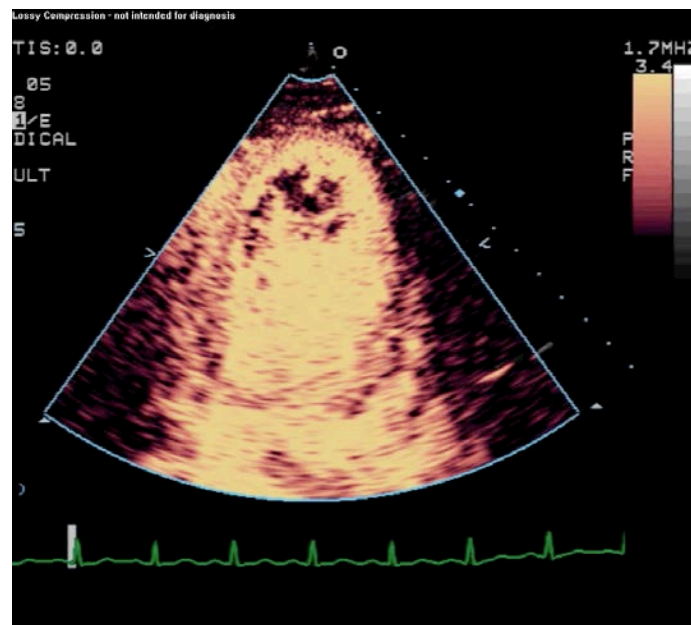




57



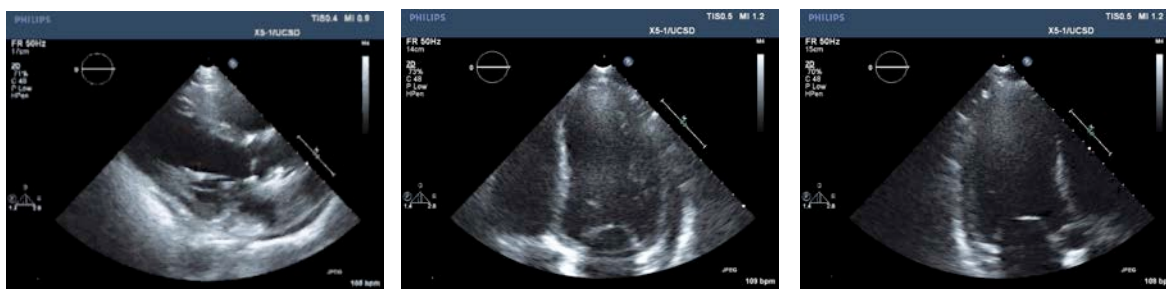
58



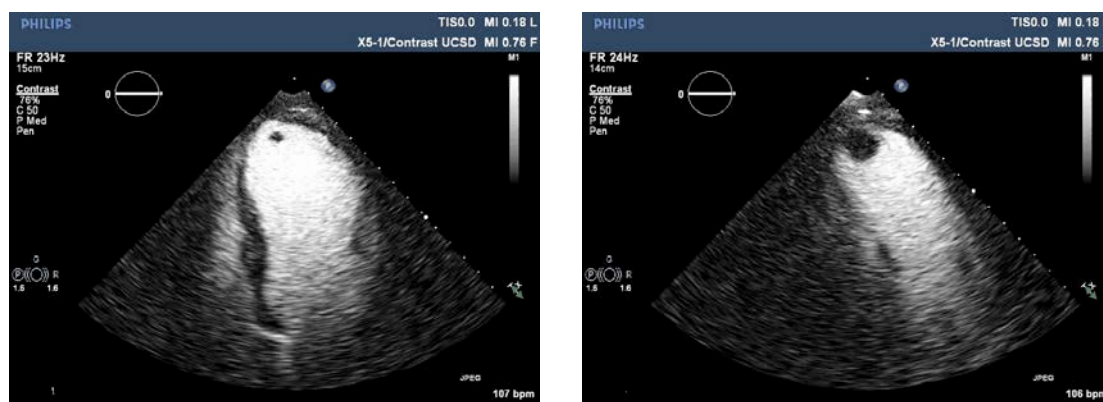
59

70 yo male with anterior STEMI

60



61



62

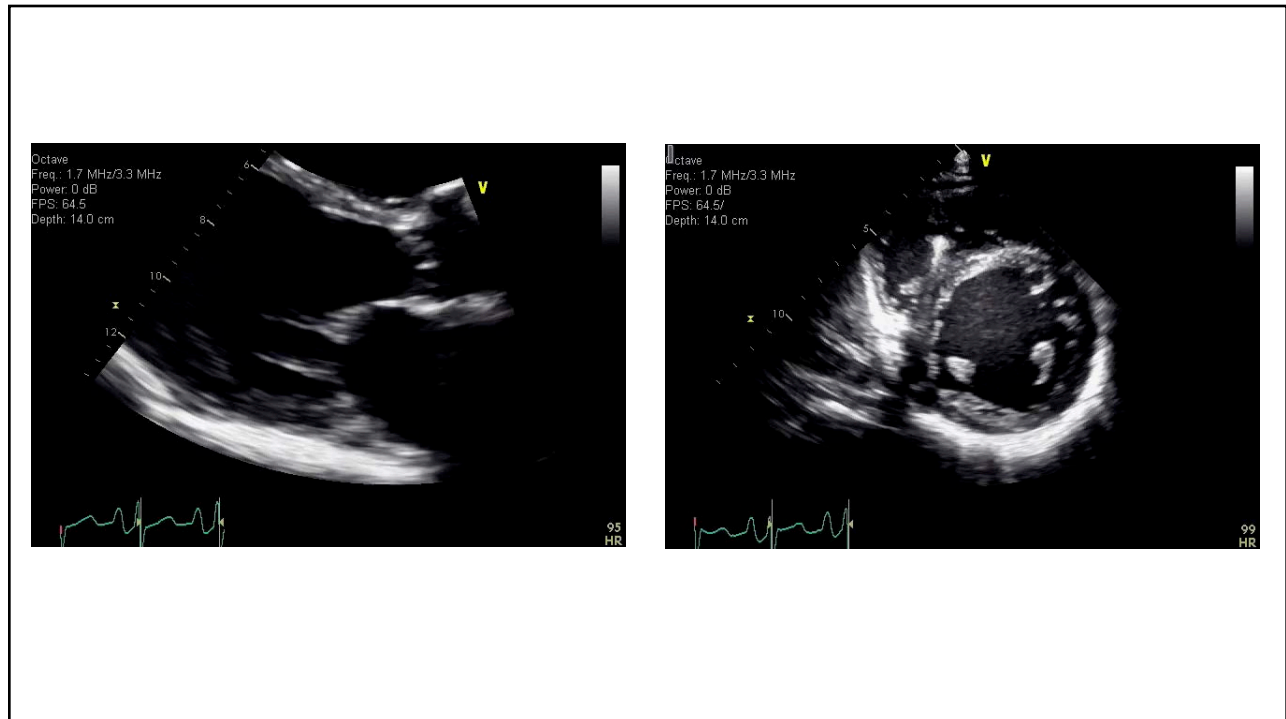
## Absence of Contrast in Thrombus



63

## Hypertrabeculation

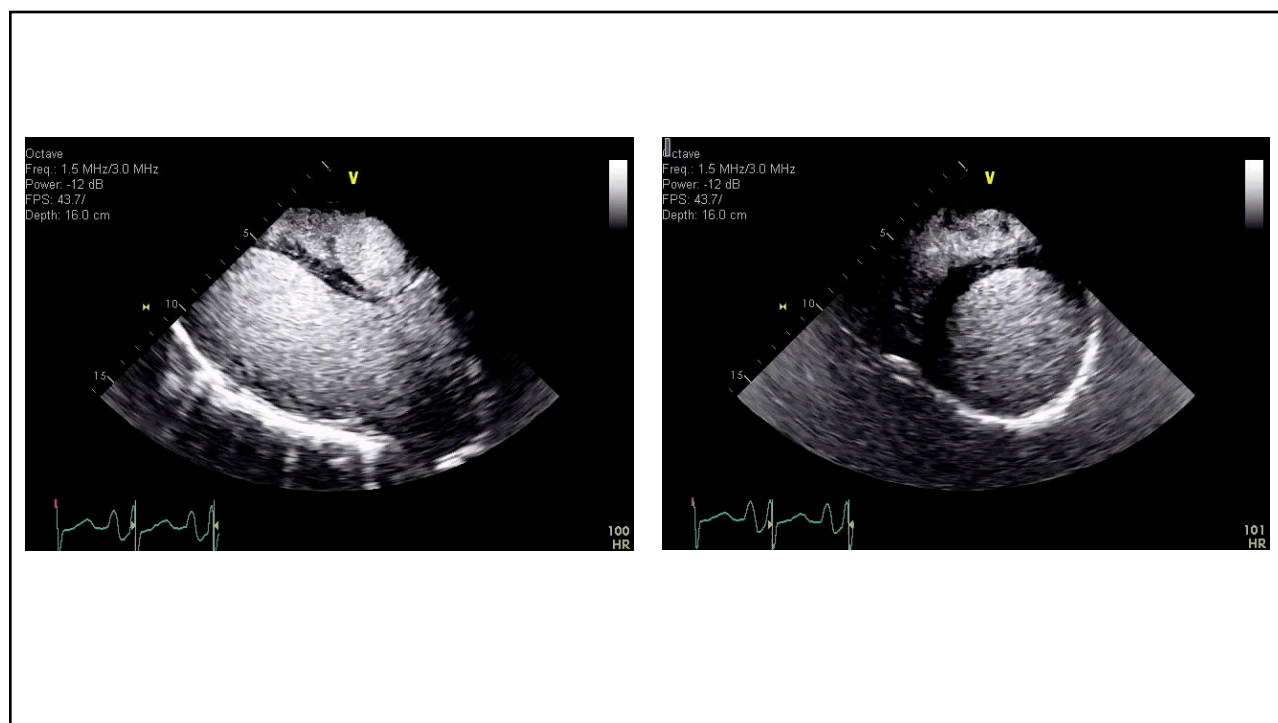
64



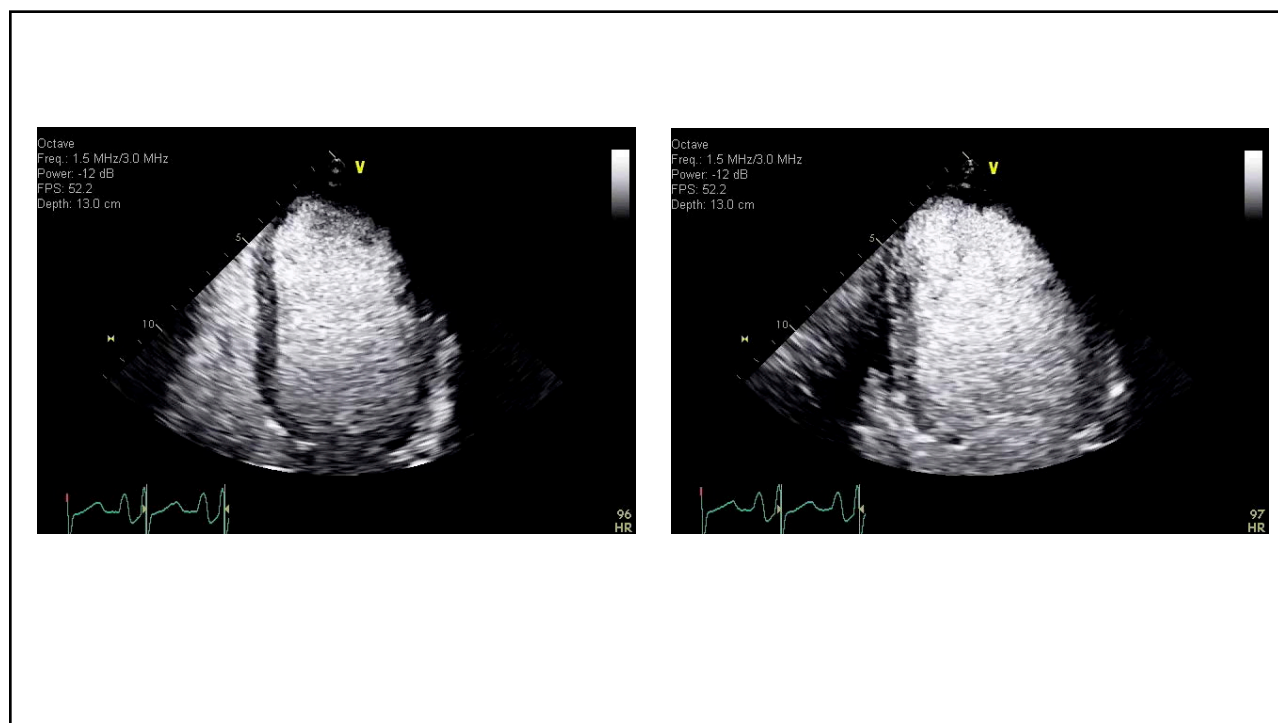
65



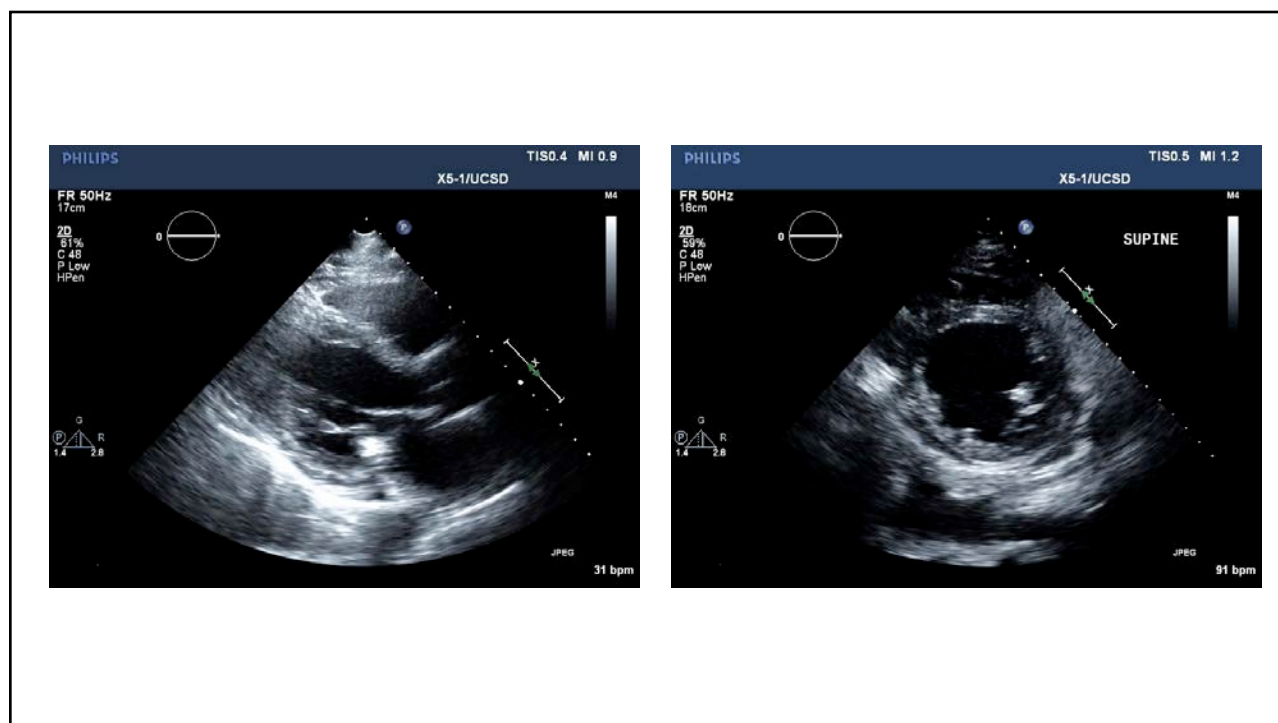
66



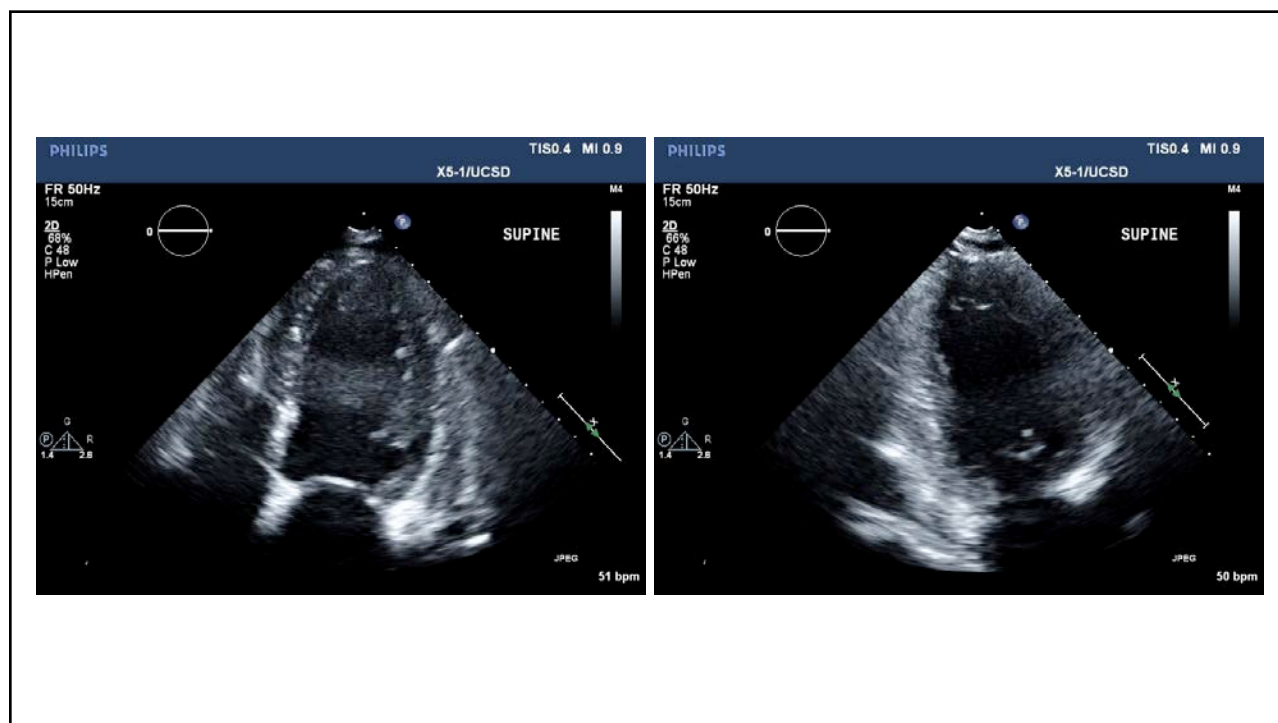
67



68

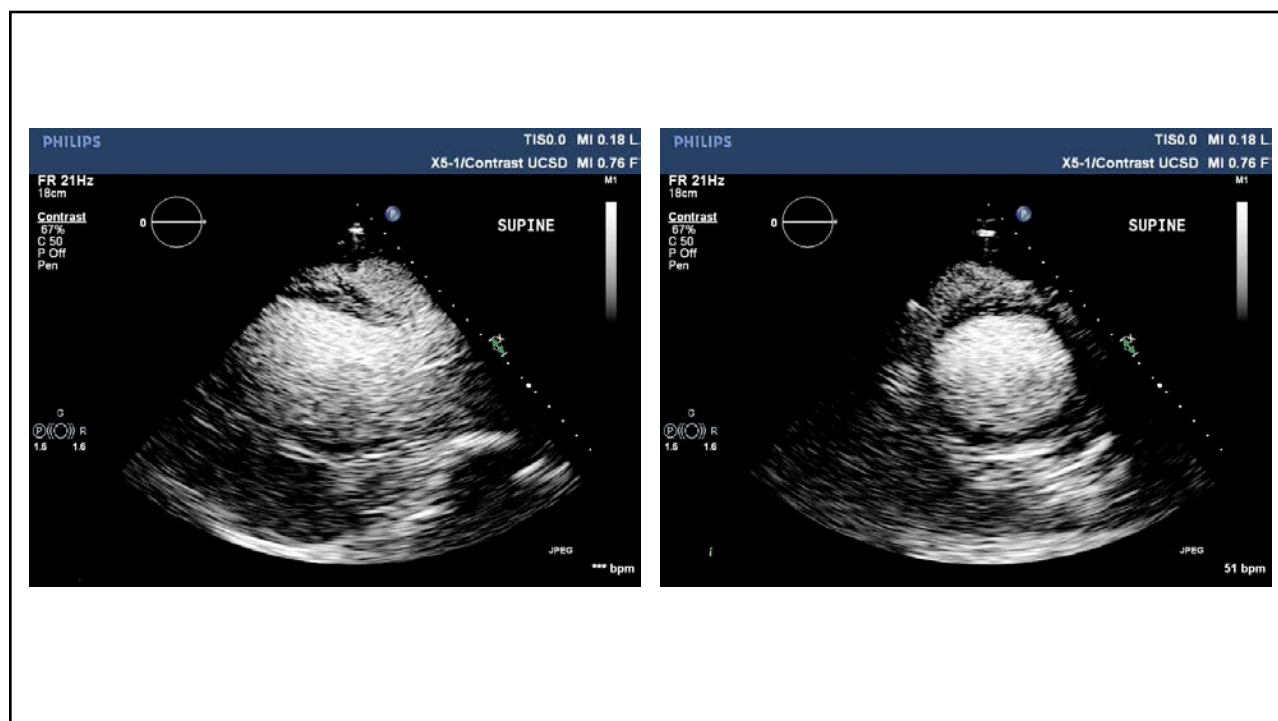


69

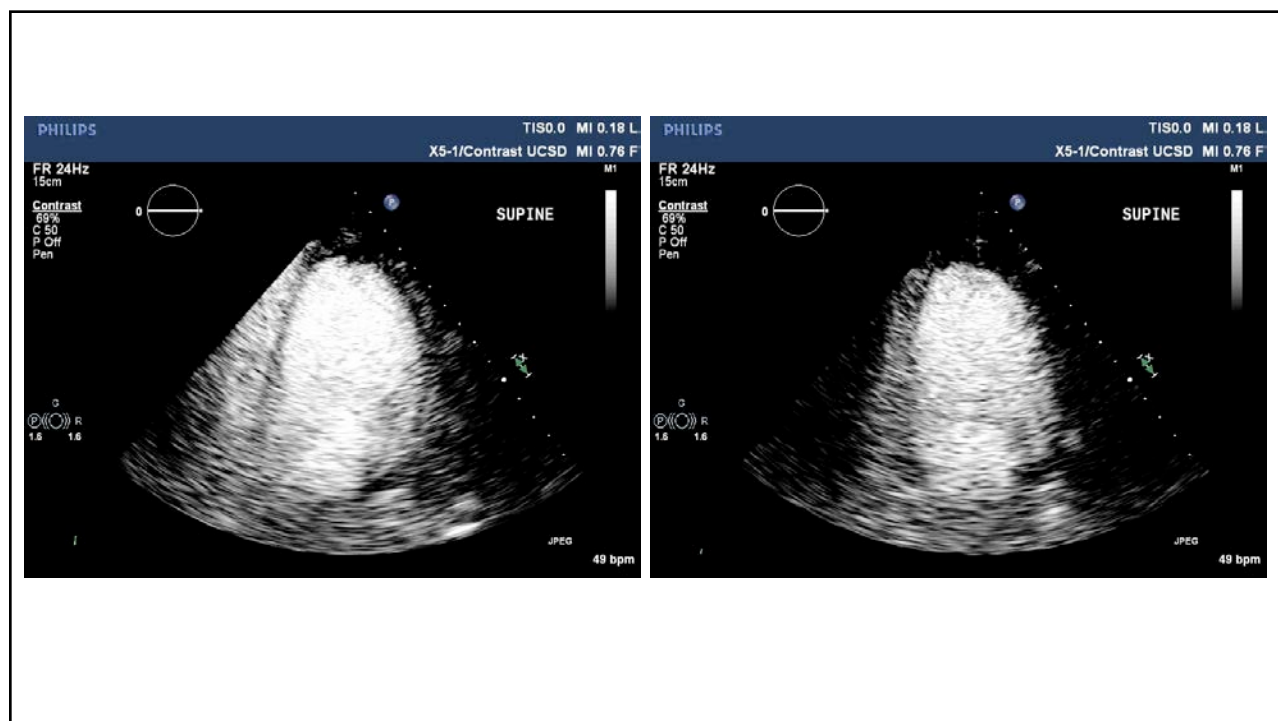


70





71



72