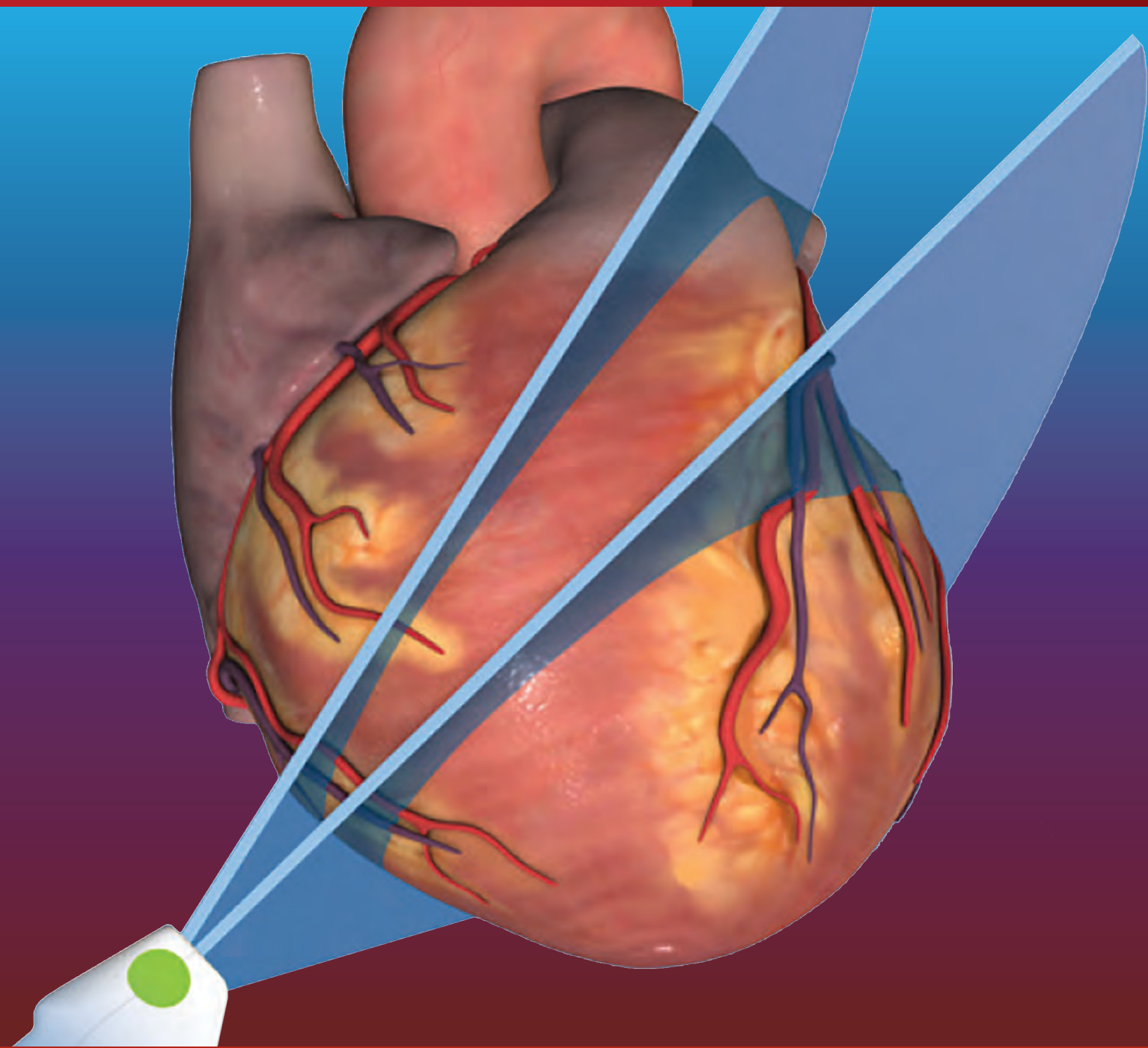


EDUCATION & PRODUCTS CATALOG

THE AMERICAN SOCIETY
OF ECHOCARDIOGRAPHY



ASE is a member organization of
professionals committed to excellence
in cardiovascular ultrasound and its
application to patient care through
education, advocacy, research,
innovation, and service.



Table of Contents

ASE Accreditation	4
Echo Hawaii	4
State-of-the-Art Echocardiography	5
ASCeXAM/ReASCE Review Course	5
Echo Florida	6
Scientific Sessions.....	6
ASE Courses Mobile App.....	7
ASE Online Learning and Education Products	7
ASEUniversity	7
Publications.....	15
Exam Review Products	15
ASE Guideline Products.....	17
ASE Programs	19
How to Order Physical Products.....	19
Product Price Guide	20
Membership in ASE	21

ASE Accreditation

ASE is accredited by the Accreditation Council for Continuing Medical Education (ACCME) to provide continuing medical education (CME) for physicians. ASE is committed to ensuring that its educational mission and all sponsored educational programs are not influenced by the special interests of any corporation or individual, and its mandate is to retain only those speakers whose financial interests can be effectively resolved to maintain the goals and educational integrity of its programs. While a monetary or professional affiliation with a corporation does not necessarily influence a presentation, the ACCME's Essential Areas, Criteria, and Policies require that any relationship that could possibly conflict with the educational value of a program be resolved prior to the educational session and disclosed to the audience. In accordance with these policies, ASE implements mechanisms prior to the planning and implementation of CME activities to identify and resolve conflicts of interest for all individuals in a position to control content.



Maintenance of Certification in Anesthesiology Program® and MOCA® are registered certification marks of the American Board of Anesthesiology®. MOCA 2.0® is a trademark of the American Board of Anesthesiology

Echo Hawaii

31st Annual Echo Hawaii

January 18-22, 2021

The Westin Hapuna Beach Resort, Kohala Coast, HI

Course Director: Neil J. Weissman, MD, FASE

Echo Hawaii presents the latest information on established and emerging cardiovascular ultrasound technologies. Expert U.S. and international faculty discuss state-of-the-art technologies with a particular focus on how they can be effectively applied in the clinical setting. Case-based approaches are used to discuss new and established uses of echocardiography for diagnosis and guiding management in patients with a broad array of cardiovascular conditions. Topics include: advanced assessment of systolic and diastolic function, 3D/4D imaging, adult congenital heart disease, and contemporary approaches to valve disease, guidance of interventional procedures, contrast echocardiography, ischemic heart disease, and aortic pathology. Special sessions include workshops on perioperative and critical care and 3D echocardiography.



"Beautiful setting, excellent speakers...wouldn't change a thing!"
"I would like to thank ASE for putting together an amazing, educational, and enriching conference."

Registration

Main Conference

ASE Member Physician: \$965

Nonmember Physician: \$1,350

ASE Member Sonographer/Allied Health: \$810

Nonmember Sonographer/Allied Health: \$990

ASE Member Resident/Fellow in Training: \$680

Nonmember Resident/Fellow in Training: \$810

**Register for all ASE courses
at ASEcho.org/LiveCourses**

Register Early and Save! Rates subject to change.
Please visit ASEcho.org/Education for up-to-date pricing.

State-of-the-Art Echocardiography

ASCeXAM/ReASCE Review Course

33rd Annual State-of-the-Art Echocardiography

February 21-24, 2020

The Westin Kierland, Scottsdale, AZ

Course Director: Bijoy K. Khandheria, MD, FASE

34th Annual State-of-the-Art Echocardiography

February 26 - March 2, 2021

Scottsdale, AZ

Course Director: Bijoy K. Khandheria, MD, FASE

State-of-the-Art Echocardiography is a premier educational venue for echocardiography in clinical practice. More than 100 cases will be used to show strain imaging, 3D echocardiography, valve disease, and intervention. Expert faculty will lead a percutaneous workshop with an in-depth exploration of the use of echocardiographic imaging in valve disease. An echo quiz, coverage of the new guidelines, and case-based learning round out this superbly rated meeting that is filled to capacity year after year.

Participants should have practical knowledge of echocardiography in order to benefit fully from this program.

“Amazing conference. I loved the environment and felt like I learned a lot more than usual. Thank you!”

“Fantastic course! The learning lab was a truly unique and outstanding experience!”

Registration

Preconference Learning Lab

Shared Computer: \$685

Individual Computer: \$815

Main Conference

ASE Member Physician: \$1,070

Nonmember Physician: \$1,425

ASE Member Sonographer/Allied Health: \$820

Nonmember Sonographer/Allied Health: \$1,000

ASE Member Resident/Fellow in Training: \$820

Nonmember Resident/Fellow in Training: \$1,070

Register Early and Save! Rates subject to change.
Please visit ASEcho.org/Education for up-to-date pricing.

21st Annual ASCeXAM/ReASCE Review Course

May 9-12, 2020

Sheraton Boston, Boston, MA

Course Director: Vera H. Rigolin, MD, FASE

22nd Annual ASCeXAM/ReASCE Review Course

May 8-11, 2021

Sheraton Boston, Boston, MA

Course Director: Vera H. Rigolin, MD, FASE

ASE has specifically designed the ASCeXAM/ReASCE Review Course as a preparatory course for the National Board of Echocardiography's™ (NBE) ASCeXAM® and ReASCE® examinations. Lectures emphasize illustrative cases and as such are not “canned talks” from other cardiovascular ultrasound courses.

The Review Course covers all aspects of cardiovascular ultrasound essential to these examinations, including physics, valvular heart disease, ischemic heart disease, congenital heart disease, and new technologies. The expert faculty uses case studies, lectures, and interactive sessions to help prepare the attendees for the ASCeXAM® or ReASCE®. Practice board exam questions after each session facilitates faculty interaction and self-guided learning.

The ASCeXAM/ReASCE Review Course has been designed with the computer-based examination administration in mind. There is case-based learning and use of an audience response system to simulate a digital, multiple choice examination. CME from this course is “echo-specific” and therefore appropriate for IAC Accreditation and NBE education prerequisites.

The ASCeXAM/ReASCE Review Course gives attendees the unique opportunity to interact with and ask questions of the expert faculty.

This course has a stellar preparation track record with 96% of people who attended this course and practiced with ASE's simulation exam (see page 16) passing the ASCeXAM on the first try.

Registration*

ASE Member Physician: \$1,330

Nonmember Physician: \$1,560

ASE Member Sonographer/Allied Health: \$1,175

Nonmember Sonographer/Allied Health: \$1,310

ASE Member Resident/Fellow in Training: \$1,175

Nonmember Resident/Fellow in Training: \$1,310

*Registration fees for the ASCeXAM/ReASCE Review Course include the online recordings of all approved lectures.

Echo Florida

9th Annual Echo Florida

October 10-12, 2020

Disney's Grand Floridian Resort and Spa

Walt Disney World®, FL

Course Director: Linda D. Gillam, MD, FASE

10th Annual Echo Florida

October 30-November 1, 2021

Walt Disney World®, FL

Course Director: Linda D. Gillam, MD, FASE

The Echo Florida course is a comprehensive review of cardiovascular ultrasound in clinical practice. The faculty is composed of U.S. and international experts who will discuss the strengths and limitations of established and emerging technologies and illustrate how these technologies can be used to improve and streamline patient care in a cost-conscious manner. There is a heavy emphasis on case-based learning. This course is designed for adult and pediatric cardiologists, cardiovascular surgeons, cardiovascular anesthesiologists, cardiac radiologists, fellows in training, cardiovascular sonographers, cardiovascular nurse specialists, internists, intensivists, and emergency physicians with special interest in clinical cardiology and echocardiography.

Topics include: coronary artery disease including stress testing, valvular heart disease, heart failure (systolic and diastolic), and cardiomyopathy, emerging technologies including contrast and 3D/4D echocardiography, complex congenital heart disease, and case-based demonstrations on the role of 2D and real time 3D/4D echocardiography to select, guide, and follow percutaneous structural heart disease interventions, replacement, and percutaneous mitral valve repair.

Main Conference

ASE Member Physician: \$1,025

Nonmember Physician: \$1,235

ASE Member Sonographer/Allied Health/Fellow in Training: \$775

Nonmember Sonographer/Allied Health/Fellow in Training: \$945

"Excellent course with great instructors. Covered a large number of clinically relevant topics with practical hands on advice."

Register Early and Save! Rates subject to change.
Please visit ASEcho.org/Education for up-to-date pricing.

Scientific Sessions

31st Annual Scientific Sessions

June 19-22, 2020

Gaylord Rockies Resort & Convention Center, Denver, CO

Program Chair: Theodore P. Abraham, MD, FASE

Sonographer Co-Chair: Sue D. Phillip, RCS, FASE

32nd Annual Scientific Sessions

June 18-21, 2021

Hynes Convention Center, Boston, MA

Program Chair: Michael L. Main, MD, FASE

Sonographer Co-Chair: Keith A. Collins, MS, RDCS, FASE

ASE's Scientific Sessions are the premier international conference devoted specifically to cardiovascular ultrasound in clinical patient care. It is a vital event for practicing echocardiographers and offers a full spectrum of educational events including symposia discussing novice, intermediate, and advanced techniques. Research featuring leading cardiovascular ultrasound experts is also highlighted. The program is an opportunity for all interested healthcare practitioners to explore contemporary issues and emerging developments in the field of cardiovascular ultrasound.

All levels of practitioners will find sessions that meet their needs, help improve their practice, and benefit their professional growth. Participants are encouraged to actively participate in sessions and interact with available faculty. **This is the meeting that everyone attends; you won't want to miss the ample opportunities to socialize with your peers and luminaries in the cardiovascular ultrasound field.**

Registration

ASE Member Physician: \$1,040

Nonmember Physician: \$1,385

ASE Member Sonographer/Allied Health: \$680

Nonmember Sonographer/Allied Health: \$920

ASE Member Resident/Fellow in Training: \$450

Nonmember Resident/Fellow in Training: \$595

"Best conference I've ever attended! Thank you!"

"Exceptional educational experience with excellent programming and speakers."

Register Early and Save! Rates subject to change.
Please visit ASEScientificSessions.org for up-to-date pricing.

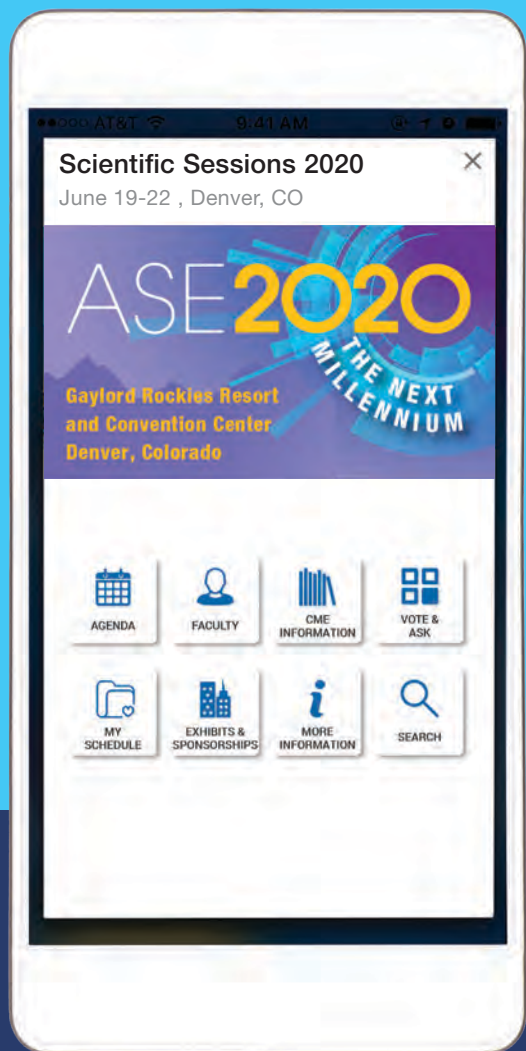
ASE Courses Mobile App

Stay up-to-date on all of ASE's live educational courses by downloading the free ASE Courses app. Find detailed information on each of ASE's courses including faculty, agendas, exhibitors, networking events, and more! Use the app to create or sync your event schedule and receive notifications of special activities and sessions while on site.

The app is available for download on both Apple and Android devices. Simply search for "ASE Courses" in the Google Play or Apple stores. Learn more about other ASE apps at ASEcho.org/apps.

The ASE Courses app includes the following:

- Echo Hawaii
- State-of-the-Art Echocardiography
- ASCeXAM/ReASCE Review Course
- Annual Scientific Sessions
- Echo Florida



ASE Online Learning and Education Products

ASE's education portfolio consists of online products, DVD products, workbooks, and reference materials. Online products can be found on **ASEUniversity.org** and physical products on **ASEMarketPlace.com**. Don't forget to use your ASE member account to take advantage of member pricing.

ASE is accredited by the Accreditation Council for Continuing Medical Education (ACCME) to provide continuing medical education (CME) for physicians. Participants may earn American Board of Internal Medicine (ABIM) MOC points, American Board of Anesthesiology (ABA) MOCA points, and/or American Board of Pediatrics (ABP) Part 2 MOC points equivalent to the amount of CME credits claimed for approved activities.

ARDMS, CCI, and Sonography Canada recognize ASE's certificates and have agreed to honor the credit hours toward their registry requirements for sonographers.

All or a portion of these activities may be eligible for Section 1 credits in the Royal College of Physicians and Surgeons of Canada's Maintenance of Certification (MOC) Program. Participants must log into MAINPORT to claim this activity.

All products with CME credits or MOC points are noted.

ASEUniversity

ASEUniversity.org is a medical education website featuring online, self-study learning opportunities for physicians, sonographers, and fellows. ASEUniversity maintains a selection of CME activities that are free with an active ASE membership. Available CME activities include a selection of one-hour recorded webinars as well as articles selected from the *Journal of the American Society of Echocardiography* (JASE). ASEUniversity posts at least four new webinars and up to 12 new articles each calendar year, highlighting relevant topics, practice issues, and new guidelines and standards for cardiovascular ultrasound.

These activities are designed for cardiovascular physicians and sonographers with a primary interest and knowledge base in the field of echocardiography. In addition, medical residents, researchers, clinicians, intensivists, cardiac anesthesiologists, critical care physicians, and other medical professionals, with a specific interest in cardiovascular ultrasound, will find these activities beneficial.

ASEUniversity Guideline-based Live Webinars

Available: ONLINE ONLY on ASEUniversity.org

Live, guideline-based webinars are also available to ASE members and nonmembers. These interactive events allow you to learn from the experts in the privacy of your home or office, while interacting and engaging with your fellow attendees. Webinars also provide the opportunity to ask the presenter questions to be answered during the live broadcast. Each webinar is approximately one hour in length. The majority of live webinars offer CME credits.

ASE Member: FREE **Nonmember:** \$25

ASE Online Learning and Education Products

ASE Annual Scientific Sessions Online Library

Available: ONLINE ONLY on ASEUniversity.org

Non-CME educational product.

ASE's Scientific Sessions Online Library combines slides, video, and speaker audio to give you the feel of a live meeting anywhere you go.

This always expanding collection contains several core curriculums taught by leading experts in the field of echocardiography. Originally presented at national, scientific conferences, ASE's Scientific Sessions Online Library provides you with year-round access to the audio and video materials. With mobile access, learning from the experts while sharing with colleagues and friends is now only a download away.

View all approved ASE Annual Scientific Sessions anywhere your computer or iOS device takes you! The ASE Annual Scientific Sessions Online Library includes: live audio recordings, PowerPoint presentations, and embedded video clips. Unlimited online access is available to all ASE Annual Scientific Sessions from 2009 through the latest conference. Purchase a single or multi-year subscription, full conference, or individual sessions.

Full Conference:

ASE Member: \$299 Nonmember: \$399

Individual session prices vary by subject matter.

ASE's Comprehensive Echocardiography

Available: Textbook on ASEUniversity.org or Amazon.com

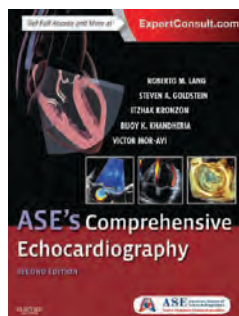
e-Book on ASEUniversity.org

Non-CME educational product.

Written by world experts from ASE, *Comprehensive Echocardiography* is a unique multimedia resource with text, case studies, and online components covering the latest uses of echocardiography, including the most recent 2D and 3D advances. This 2nd edition, with its new title, has over 200 chapters that include essential material in a succinct format. It has everything you need to assess cardiac anatomy and function and obtain clinically useful, noninvasive information for more accurate diagnosis and evaluation of heart disease.

Included with the book is an online version and an outstanding online library of slides and videos of case presentations that correspond to crisp, full-color images, allowing you to view dynamic echocardiographic clips of various cardiac pathologies.

ASE Member: \$199 Nonmember: \$229



Assessing Left Ventricular Diastolic Function

Chair: Susan A. Mayer, MD, FASE

Available: DVD on ASEMarketPlace.com or Amazon.com
ONLINE on ASEUniversity.org

Designated by ASE for 8 AMA PRA Category 1 Credits™.

Accepted by ABIM for 8 MOC points towards Medical Knowledge Self-assessment requirements. Accepted by ABA for 8 MOCA points towards Medical Knowledge Self-assessment requirements.

Assessing LV Diastolic Function is comprised of case-based lectures followed by case studies. The dedicated lectures include questions on the echo parameters used to assess diastolic function and the physiology of diastology. This educational tool also describes how to utilize the ASE and EACVI 2016 guideline on diastology to classify and grade diastolic function, estimate left atrial filling pressure in patients, and evaluate patients with indeterminate diastolic function. Learn about the differential diagnosis of patients presenting with dyspnea such as restrictive cardiomyopathy and constrictive pericarditis, as well as the physiology of diastolic function, and the pitfalls in the assessment of diastology.

This educational product is intended for cardiologists, anesthesiologists, cardiac sonographers, fellows, and other medical professionals interested in a comprehensive review of diastology and applying the updated diastology guideline in routine clinical practice.

Lectures Include:

- Advanced Physiology of Cardiac Diastolic Function
- Echocardiographic Parameters of Diastolic Function
- Applications of 2016 ASE/EACVI Guidelines to Grade LV Diastolic Function & Estimate LV Filling Pressure: Case-based Approach
- Indeterminate Diastolic Function Case Studies
- Diastolic Function in Special Patient Populations - Part I
- Diastolic Function in Special Patient Populations - Part II
- Diastolic Parameters in Constrictive and Restrictive Disease
- Diastolic Stress Testing: What is it??

1 User License

ASE Member: \$175
Nonmember: \$250

5 User License

ASE Member: \$375
Nonmember: \$475

10 User License

ASE Member: \$600
Nonmember: \$700

ASE Online Learning and Education Products

Basics of Bubbles: What Every Clinician Should Know

Chair: Jonathan R. Lindner, MD, FASE

Available: ONLINE on ASEUniversity.org

Designated by ASE for 6 AMA PRA Category 1 Credits™.

Accepted by ABIM for 6 MOC points towards Medical Knowledge Self-assessment requirements.

Accepted by ABA for 6 MOCA points towards Medical Knowledge Self-assessment requirements.

This program was made possible by the funding of an unrestricted educational grant from GE Healthcare, Pharmaceutical Diagnostics.

Topics Include:

- The Contrast Basics: Contrast Agents and the Ultrasound Approaches to Detecting Them
- The Sonographers Checklist for Successful Adoption of Contrast in the Echo Lab
- LVO at Rest – What You Don't See Can Hurt You
- The Impact of Contrast for Assessment of CAD
- Policies, Practice, and Training for Contrast Echocardiography
- Future of Contrast: Perfusion Imaging, Molecular Imaging, Therapy

ASE Member: Free Nonmember: Free

Clinical Cases in Echocardiography: Focus on Congenital Heart Disease

Chair: Richard A. Humes, MD, FASE

Available: ONLINE ONLY on ASEUniversity.org

Non-CME educational product.

This activity provides online cases reviewing the role of echocardiography in diagnosis and follow-up of a wide variety of different congenital heart diseases and defects.

Topics include, but are not limited to:

- Atria and Ventricular Septal Defects
- Coarctation of the Aorta
- Ebstein's Anomaly
- Patent Foramen Ovale
- Patent Ductus
- Arteriosus Valve Defects
- Pulmonary Artery Stenosis

Cases include symptomatic and asymptomatic diagnosis and treatment, as well as adult patients with repaired or palliated CHD.

ASE Member: \$75 Nonmember: \$95

Best of ASE Series

Available: DVD on ASEMarketPlace.com or Amazon.com

ONLINE on ASEUniversity.org

Non-CME educational product.

Enhance your understanding of echocardiography with this compilation of lectures from ASE courses.

Broken down into multiple volumes, the current series includes:

- Volume 1: Introduction to Diastology *2nd Edition*
- Volume 2: Basics of Strain *2nd Edition*
- Volume 3: A Practical Guide to 3D Echocardiography *2nd Edition*
- Volume 4: Basic Physics of Ultrasound, Knobology, and Echocardiographic Artifacts
- Volume 5: Contrast Echocardiography *2nd Edition*
- Volume 6: Echocardiographic Imaging of Native and Prosthetic Valves *2nd Edition*
- Volume 7: Stress Echocardiography
- Volume 8: Transesophageal Echocardiography
- Volume 9: Perioperative Echocardiography
- Volume 10: Vascular Ultrasound

Price per volume: ASE Member: \$75 Nonmember: \$95

Case-based Learning: Focus on Patient Safety

Chair: James D. Thomas, MD, FASE

Available: ONLINE ONLY on ASEUniversity.org

Non-CME educational product.

Focus on Patient Safety is an entirely online, case-based program covering both clinical and safety issues.

Topics include, but are not limited to:

- Antibiotic Prophylaxis
- Stress Echocardiography
- Bioeffects of Ultrasound
- TAVR
- Contrast
- TEE

ASE Member: \$75 Nonmember: \$95

ASE Online Learning and Education Products

Case-based Series: **NEW** Fundamentals of Strain Imaging

Chair: John Gorcsan III, MD, FASE

Available: Online on ASEUniversity.org

Designated by ASE for 3 AMA PRA Category 1 Credits™.

Accepted by ABIM for 3 MOC points towards Medical Knowledge Self-assessment requirements.

Accepted by ABA for 3 MOCA points towards Medical Knowledge Self-assessment requirements.

This online course is a series of case-based video presentations featuring a practical “how-to” approach and focuses on global longitudinal strain (GLS) as a measure of cardiac function additive to left ventricular ejection fraction using different software. Because strain imaging technology is constantly changing and improving, contemporary approaches are demonstrated emphasizing steps for quality control and recognizing limitations.

Activities Include:

- 1.A Introduction to Strain Imaging
- 1.B Technical Considerations for Strain Imaging

Test Your Knowledge

- 1.1 Heart and Ribs Echocardiography
- 2.0 Strain Imaging: Tips for Acquisition and Analysis
- 3.1 Case: Normal Left Ventricular Function (GE Echopac v 203)
- 3.2 Case: Ischemic Cardiomyopathy with Aortic Stenosis (GE Echopac v 203)
- 3.3 Case: Dilated Cardiomyopathy Suboptimal Images (GE Echopac v 203)
- 3.4 Case: Managing a Timing Artifact (GE Echopac v 203)
- 4.1 Case: Dyspnea Normal Left Ventricular Function (Philips QLAB 13)
- 4.2 Case: Dilated Cardiomyopathy (Philips QLAB 13)
- 4.3 Case: Hypertrophic Cardiomyopathy (Philips QLAB 13)

Test Your Knowledge

- 5.0 Case Studies of Strain Imaging in Cardio-Oncology
- 5.1 Case: Cardio-Oncology (Siemens/TOMTEC)
- 6.1 Case: Baseline Pre-chemotherapy (Canon Aplio i900)
- 6.2 Case: Heart Failure Preserved Ejection Fraction (Canon Aplio i900)
- 7.1 Case: Palpitations and Normal Left Ventricular Function (TOMTEC Arena)
- 7.2 Case: Cardiomyopathy-Aortic Valve Replacement (TOMTEC Arena)
- 8.0 Strain Imaging in Cardiac Amyloidosis
- 8.1 Case: Cardiac Amyloidosis (GE Echopac v 203)

ASE Member: \$95 Nonmember: \$150

Contrast-Enhanced Echocardiography Lecture Series

Chair: Jonathan R. Lindner, MD, FASE

Available: ONLINE on ASEUniversity.org

Non-CME educational product.

This series contains lectures by ASE subject matter experts. Each lecture includes both didactic and case-based teaching methods. The lectures are ordered to build upon the concepts from the previous lectures. Participants are provided with questions testing knowledge between lectures. This activity is designed for all cardiovascular physicians, cardiac sonographers, and nurses with a primary interest and knowledge base in the field of echocardiography and a specific interest in contrast echocardiography

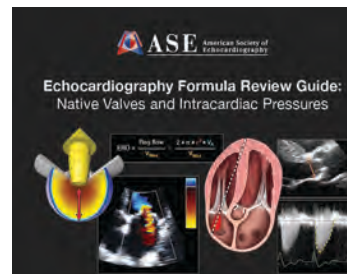
The following topic areas are included in this series:

- Contrast Basics
- Policy and Procedures of Contrast
- Ventricular Cavity Opacification
- Myocardial Contrast Perfusion
- Improving Diagnostic Value
- Knobology

This series is made possible through an unrestricted educational grant from GE Healthcare.

ASE Member: Free Nonmember: Free

Echocardiography Formula Review Guide: Native Valves and Intracardiac Pressures



This unique, spiral-bound, 6×8” formula pocket guide is a must-have reference for every practicing echocardiographer, cardiology fellow, and sonographer. The illustrative cards detail the echocardiographic quantitative evaluation of native valve regurgitation and stenosis, as well as how to determine intracardiac pressures. If you’re looking to become more quantitative in your reports, need a refresher on quantifying native valve disease, or studying for boards, this formula handbook will be useful on a daily basis.

ASE Member: \$20 Nonmember: \$40

ASE Online Learning and Education Products

Essentials for Proficiency in Basic Cardiovascular Ultrasound

Chair: Susan E. Wiegers, MD, FASE

Available: DVD with Workbook on ASEMarketPlace.com or Amazon.com
ONLINE with Downloadable Workbook on ASEUniversity.org

Designated by ASE for 13.5 AMA PRA Category 1 Credits™.

Accepted by ABIM for 13.5 MOC points towards Medical Knowledge Self-assessment requirements.

Designed by top physicians and professors of cardiovascular medicine, this comprehensive review of basic echocardiography has been created as a teaching tool for echocardiography fellows and others interested in learning about the use of cardiovascular ultrasound in clinical practice. This set includes 15 lectures on a variety of topics, beginning with the normal TTE and TEE examinations, and then covering the mitral and aortic valves in-depth, left and right heart function, physics, prosthetic valves, and more. Each lecture has been carefully crafted to include a thorough review of practical concepts, references to ASE's Guidelines and Standards, video examples of normal and abnormal echocardiograms, and case studies designed to provide real-world examples. A workbook correlates with the lectures to provide a guide for each presentation.

Lectures include:

- The Normal Transthoracic Echocardiogram
- Transesophageal Echocardiography
- Introduction to Physics of Echocardiography
- Echo Assessment of the Left Ventricle
- Mitral Valve 1: Normal Anatomy & Regurgitation
- Mitral Valve 2: Mitral Stenosis
- Aortic Valve 1: Normal Valve and Aortic Stenosis
- Aortic Valve 2: Regurgitation, Endocarditis
- Cardiomyopathies
- Echocardiography of Endocarditis
- The Right Heart
- Pericardial Disease
- Cardiac Masses and Tumors
- Coronary Artery Disease and Stress Echo
- Echocardiographic Assessment of Prosthetic Valves

ASE Member: \$175 Nonmember: \$250

Focused Cardiac Ultrasound: Fundamental Principles of Acquisition & Interpretation

Chair: Kirk T. Spencer, MD, FASE

Available: DVD ONLY on ASEMarketPlace.com or Amazon.com

Non-CME educational product.

This state-of-the-art DVD is an instructional video to be used for self-guided learning and professional lectures. The DVD features several interactive sections for flexible presentation, including an easy to navigate DVD menu, overview of relevant cardiac anatomy, presentation of transducer positions, imaging examples of a wide variety of pathologies, case presentations with discussions, and an interpretation practice section designed to gauge levels of familiarity with the materials presented.

Topics include:

Section 1: Heart Anatomy

- Heart and Ribs
- Axis of the Heart
- Planes of the Heart
- Chambers
- Valves and Annuli
- Blood Flow

Section 2: Focused Cardiac Ultrasound Assessment

- Left Parasternal Long Axis (PLAX)
- Left Parasternal Short Axis (PSAX)
- Apical
- Subcostal
- Lung

Section 3: Pathologies, featuring 20 different examples, including:

- Pericardial Effusion
- RV & LV Systolic Dysfunction
- Severely Calcified AV
- Pleural Effusion
- LV Hypertrophy
- Pulmonary Edema
- Dilated Aortic Root
- IVC Collapse

Section 4: Case Studies

Section 5: Practice Interpretations

Sections 4 and 5 are TWO BONUS MATERIAL SECTIONS to provide you with opportunities to test your knowledge through a variety of clinical patient scenarios.

ASE Member: \$150 Nonmember: \$250

ASE Online Learning and Education Products

How to Perform a TTE Study: Transducer Position and Anatomy

Chair: Roberto M. Lang, MD, FASE

Available: DVD ONLY on ASEMarketPlace.com or Amazon.com

Non-CME educational product.

This instructional video can be used for professional lectures and offers an interactive section for flexible presentations. The video includes an overview of relevant cardiac anatomy, a step-by-step presentation of all transducer positions, and the sequential transducer movements to acquire standard echo images needed to complete a transthoracic echocardiographic study.

This product content consists of two sections as follows:

Section 1:

Heart Anatomy

- 1.1 Heart and Ribs Echocardiography
- 1.2 Axis of the Heart
- 1.3 Planes of the Heart (PLAX)
- 1.4 Chambers
- 1.5 Valves and Annuli (PSAX)
- 1.6 Blood Flow

Section 2:

Basic Transthoracic

- 2.1 Left Parasternal Long
- 2.2 Left Parasternal Short
- 2.3 Apical
- 2.4 Subcostal
- 2.5 Suprasternal

ASE Member: \$99 Nonmember: \$150

Pediatric and Congenital Heart Disease Lecture Series

Chair: Timothy C. Slesnick, MD, FASE

Available: ONLINE ONLY on ASEUniversity.org

Non-CME educational product.

A comprehensive lecture series on core types of congenital heart disease. Comprised of 12 lesions, you will gain an in-depth understanding on the use of echocardiography/pathology correlations and echocardiography/surgery correlations.

- Lesion 1: Pulmonary Venous Anomalies
- Lesion 2: Atrial Septal Defects
- Lesion 3: Tricuspid Valve Pathology
- Lesion 4: Common Atrioventricular Canal
- Lesion 5: Tetralogy of Fallot
- Lesion 6: Double Outlet Right Ventricle
- Lesion 7: Congenitally Corrected Transposition of the Great Arteries
- Lesion 8: Hypoplastic Left Heart Syndrome
- Lesion 9: Pulmonary Atresia with Intact Ventricular Septum
- Lesion 10: Aortic Coarctation and Interrupted Aortic Arch
- Lesion 11: Truncus Arteriosus
- Lesion 12: D-Transposition of the Great Arteries

ASE Member: \$75 Nonmember: \$95

Proper Echocardiographic Measurements: How and Why, 2nd Edition

Chair: Andy A. Pellett, PhD, RCS, RDGS, FASE

Available: DVD on ASEMarketPlace.com or Amazon.com
ONLINE on ASEUniversity.org

Designated by ASE for 5 AMA PRA Category 1 Credits™.

This evidence-based product focused on the methods used to obtain measurements, including explanations describing why such methods are appropriate. This educational tool comprises a combination of didactic lectures and clinical questions. It can be used as a review for experienced sonographers, as well as a training tool for new or early-career sonographers and others who are interested in the practice of cardiovascular ultrasound.

Topics include:

- 2D vs. M-mode
- LV Linear Dimensions
- Basal Cardiac Measurements
- Left Ventricular Volume
- Left Atrial Volume
- Inferior Vena Cava
- Right Heart
- Strain Echocardiography
- 3D Echo: LV Volume
- Spectral Doppler
- Mitral Inflow
- Mitral Annulus (Doppler Tissue Imaging)
- Pulmonary Vein
- Mitral Stenosis
- Mitral Regurgitation
- Tricuspid Regurgitation
- Aortic Valve
- Hypertrophic Obstructive Cardiomyopathy

1 User License

ASE Member: \$175
Nonmember: \$250

5 User License

ASE Member: \$375
Nonmember: \$475

10 User License

ASE Member: \$600
Nonmember: \$700

ASE Online Learning and Education Products

Self-Study Program IV

Available: DVD ONLY on ASEMarketPlace.com or Amazon.com

Designated by ASE for 16 AMA PRA Category 1 Credits™.

Accepted by ABIM for 16 MOC points towards Medical Knowledge Self-assessment requirements.

This self-study program contains 16 presentations on the latest material on echocardiography that you can move through at your own pace. This program is designed for adult and pediatric cardiologists, cardiovascular surgeons, cardiovascular anesthesiologists, fellows in training, cardiovascular sonographers, cardiovascular nurse specialists, internists, intensivists, and emergency physicians with special interest in clinical cardiology and echocardiography.

Topics include:

- Diastolic Function Assessment
- Chamber Quantification
- Valvular Regurgitation
- Use of Microbubble Contrast Agents
- Structural Heart Disease
- Stress Echocardiography
- Left Ventricular Assist Devices

1 User License

ASE Member: \$175
Nonmember: \$250

5 User License

ASE Member: \$375
Nonmember: \$475

10 User License

ASE Member: \$600
Nonmember: \$700

Self-Study Program: Pediatric and Congenital Heart Disease

Available: DVD ONLY on ASEMarketPlace.com or Amazon.com

Designated by ASE for 12 AMA PRA Category 1 Credits™.

Accepted by ABIM for 12 MOC points towards Medical Knowledge Self-assessment requirements.

Accepted by ABP for 12 MOC points towards Medical Knowledge Self-assessment requirements.

This DVD provides a comprehensive review of the use of echocardiography in the diagnosis and follow-up of a variety of congenital heart diseases. Imaging from basic to comprehensive echocardiographic assessment of congenital heart disease is discussed. The DVD provides a review of anatomy and physiology including identifying and optimizing echocardiographic views for assessing and characterizing variations of congenital heart disease. Additional practical aspects are covered including common imaging pitfalls, the echocardiographic findings used to determine the need for urgent intervention, multimodality imaging, and 3D echocardiography for pre-surgical planning, as well as imaging for short- and long-term follow up of both repaired and unrepaired lesions. This DVD is suitable for sonographers, fellows, cardiologists, and physicians with limited background in congenital heart disease as well as those with significant congenital cardiac expertise.

Topics include, but are not limited to:

- 3D Mitral Valve Morphology
- Diastology
- Aortic Stenosis
- Pulmonary Atresia
- Congenital Heart Disease

1 User License

ASE Member: \$175
Nonmember: \$250

5 User License

ASE Member: \$375
Nonmember: \$475

10 User License

ASE Member: \$600
Nonmember: \$700

ASE Online Learning and Education Products

Transesophageal Echocardiography in Structural Heart Disease

Chair: G. Burkhard Mackensen, MD, PhD, FASE

Available: DVD on ASEMarketPlace.com or Amazon.com
ONLINE on ASEUniversity.org

Designated by ASE for 15 AMA PRA Category 1 Credits™.

Accepted by ABIM for 15 MOC points towards Medical Knowledge Self-assessment requirements.

Accepted by ABA for 15 MOCA points towards Medical Knowledge Self-assessment requirements.

This case-based product highlights the specifics of procedural imaging in the structural heart disease area, namely exact procedure-specific guidance, procedural communication using an unambiguous procedure-specific language, familiarity with all relevant echocardiographic modalities, and when to use them most effectively. The product highlights experts in this field showcasing some of their best successes and failures, along with a discussion of best practices and solutions.

Topics include, but are not limited to:

- TAVR
- Transcatheter Tricuspid Valve Interventions
- Mitral Repair
- LAA Closure
- Paravalvular Leak Closure
- VSD Closure
- Valve-in-Valve
- ASD and PFO Closure
- Adult Congenital Interventions

1 User License

ASE Member: \$175
Nonmember: \$250

5 User License

ASE Member: \$375
Nonmember: \$475

10 User License

ASE Member: \$600
Nonmember: \$700

Utility of 3D Echocardiography: Promises and Perspectives

Chair: Roberto M. Lang, MD, FASE

Available: DVD on ASEMarketPlace.com or Amazon.com
ONLINE on ASEUniversity.org

Designated by ASE for 12 AMA PRA Category 1 Credits™.

Accepted by ABIM for 12 MOC points towards Medical Knowledge Self-assessment requirements.

Three-dimensional (3D) echocardiography has multiple advantages for the visualization of cardiac anatomy, chamber quantification, and guidance of transcatheter interventions.

Experts in 3D echocardiography address essential topics in a case-based approach with multiple examples. The product begins with history of the technology and moves to the basics of image acquisition and display. Subsequent lectures focus on chamber quantification and valvular heart disease. The use of 3D echocardiography to guide transcatheter interventions is also examined in depth. Finally, a vision for the future of 3D echocardiography, including virtual reality, fusion imaging, and holographic display is presented.

This teaching tool has multiple benefits including giving you the capacity to quickly gain knowledge and improve your understanding of the capabilities of this novel imaging technique, the aptitude to visualize dynamic images in our clinical work, and an understanding of the potential future of 3D echocardiography.

Topics include:

- History of 3D Echocardiography
- 3D Acquisition Strategies and Display Assessment of LV Function
- Assessment of RV and LA Function
- Evaluation of the Mitral Valve and Tricuspid Valve
- Evaluation of the Aortic Valve
- Quantitation Methods in Valvular Heart Disease
- Fusion Imaging in Interventions
- Assessment of Interventions in Structural Heart Disease
- TAVR, Mitral Clip and Peri-valvular Leak, and ASD and LAA Appendage Closure
- 3D Printing
- New Display Methods: Augmented Reality and Holography

1 User License

ASE Member: \$175
Nonmember: \$250

5 User License

ASE Member: \$375
Nonmember: \$475

10 User License

ASE Member: \$600
Nonmember: \$700

Exam Review Products

Advanced Cardiac Sonographer Registry Review Guide

Chairs: Margaret M. Park, BS, ACS, RDCS, RVT, FASE; Deborah A. Agler, ACS, RDCS, FASE

Available: DVD with Workbook on ASEMarketPlace.com or Amazon.com
ONLINE with Downloadable Workbook on ASEUniversity.org

Non-CME educational product.

Designed by accomplished expert sonographers and ACS imaging specialists, this comprehensive review of basic and advanced echocardiography has been created as a review guide and teaching tool for sonographers preparing to sit for the Advanced Cardiac Sonographer Registry Exam.

This video and workbook set includes 20 modules on a variety of topics from IAC standards and guidelines for adult echocardiography accreditation and quality assurance, to an in-depth review of cardiogenic shock and emergency echo. Other areas include stress echo, congenital disease, chemotherapy echocardiography, left and right heart function, prosthetic valves, research methods and biostatistics, interventional echocardiography, and the latest technological advances. Each lecture has been carefully designed to include a thorough review and clinical application through real video case study presentations.

A question and answer section, in the workbook, correlates with each lecture. The workbook also includes two 180-question mock exams designed to test your overall knowledge and skillset in preparing you to take the ACS Registry Exam with success.

Echocardiography fellows, nurses, researchers, and others interested in an in-depth review of echocardiography and echo lab quality assurance best practices would also find this product valuable.

ASE Member: \$150 Nonmember: \$250

ASCeXAM/ReASCE Review Course Online Library

Available: ONLINE ONLY on ASEUniversity.org

Non-CME educational product.

These lectures were presented at ASE's ASceXAM /ReASCE Review Course by expert faculty and cover all aspects of cardiovascular ultrasound essential to the board examinations. The online lecture format features synchronized slides, including embedded videos and the accompanying audio. You will feel like you are sitting in the class. This product is perfect for individuals looking to access the content anytime, anywhere.

More than 28 hours of course content will help you prepare for the ASceXAM or ReASCE certification examinations.

ASE Member: \$375 Nonmember: \$525

ASceXAM/ReASCE Online Practice Exam Simulation

Available: ONLINE ONLY on ASEUniversity.org

Non-CME educational product.

Designed to prepare physicians for the National Board of Echocardiography's ASceXAM or ReASCE certification examinations, this test bank consists of 300 multiple choice questions containing over 400 images and videos covering:

- The Physical Principles of Cardiovascular Ultrasound
- Valvular Heart Disease
- Ventricular Size and Function
- Coronary Artery Disease and Cardiomyopathies
- Congenital Heart Disease and Fetal Echocardiography, as well as Cardiac Masses
- Pericardial Disease
- Myocardial Contrast
- M-mode
- Two-Dimensional
- Doppler Echocardiography
- Latest Applications in Echocardiography

In addition to objective-based questions, case studies are included to evaluate your knowledge of the field. To introduce you to the exam format and to ensure that you are comfortable with the method of answering the exam questions, a practice quiz is provided before you begin your attempts at the full exam simulation. You may take this quiz as many times as you wish. The educational content of the quiz is just as important as what is contained in the exam simulation. This product allows you to take two simulated exams of 150 questions and be graded up to six times. You have 18 weeks of access to the simulation exam.

ASE Member: \$199 Nonmember: \$250

Cardiovascular Sonographer Registry Review Guide **NEW** 2nd Edition

Chairs: Kymberly A. Glyde, RDCS, FASE;
Kim Pace, BS, RDCS, FASE

Available: DVD with Workbook on ASEMarketPlace.com or Amazon.com
ONLINE with Downloadable Workbook on ASEUniversity.org

Non-CME educational product.

Designed by top sonographers, the Cardiovascular Sonographer Registry Review Guide provides a comprehensive guide for both the American Registry for Diagnostic Medical Sonography (ARDMS) and the Cardiovascular Credentialing International (CCI) adult cardiovascular ultrasound registry examinations. This two piece, bundled set will provide a thorough review of adult echocardiography and physics to help you pass these examinations. The presentations cover the essentials of topics included on the registry examinations. The workbook correlates with each lecture providing a question and answer section for your review. The final chapter also includes one 100-question mock exam designed to test your overall knowledge and skill set in preparing you to take the registry exam with success. All of the presentations are given by registered cardiovascular sonographers who are the best in their field and are expert educators.

Lectures cover the following topics:

- Cardiac Embryology
- Cardiac Physiology and Electrocardiography
- Anatomy of the Heart and Basic Embryology
- Transesophageal Echocardiography
- Systolic and Diastolic Function
- Valvular Heart Disease
- Pericardial Disease, Cardiac Tumors, and Aortic Dissection
- Ischemic Heart Disease and Cardiomyopathies
- Systemic and Pulmonary Hypertensive Heart Disease
- Adult Congenital Heart Disease
- Contrast and Pharmacology
- Stress Echocardiography
- Surgical and Interventional Echocardiography
- Patient Management, Clinical Medicine, and Emergencies
- Transthoracic Echocardiography: Nomenclature and Standard Views
- General Principles of Echocardiography
- Cardiovascular Sonographer Registry Review Guide Mock Exam

ASE Member: \$150 Nonmember: \$250

Journal of the American Society of Echocardiography (JASE)

JASE features the very latest clinical, scientific, legal, and economic information regarding the use of cardiac ultrasound. The Journal's original, peer-reviewed articles cover conventional procedures as well as newer clinical techniques, such as transesophageal echocardiography, intraoperative echocardiography, and intravascular ultrasound. The Journal, an official publication of the ASE, has an Impact Factor of 6.111. Your subscription also includes online access to JASE.

OnlineJASE.com

ASE Member: FREE

Nonmember: \$378 per year (U.S.)/\$482 per year (international)



CASE Cardiovascular Imaging Case Reports

CASE, a global, open access, online journal, welcomes case reports where cardiovascular ultrasound is used to diagnose or help solve a clinical problem. Examples include cases where cardiovascular ultrasound was used as a critical component of a multimodality approach to disease diagnosis or evaluation, or where it was used to detect unusual or atypical disease manifestations. **Now accepting veterinary imaging cases!**

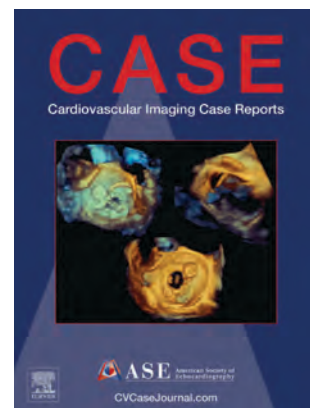
Visit **CVCaseJournal.com** for free access to CASE and details on how to submit a case.

ASE Member: FREE

(Open Access Fees for Accepted Articles: \$550)

Nonmember: FREE

(Open Access Fees for Accepted Articles: \$825)



ASE Guideline Products

ASE is pleased to offer a selection of our guidelines in a variety of different educational formats. Please refer to the information below about each of the formats and the table on the next page for which guidelines are available in which formats.

Available: All Guideline Products available on ASEMarketPlace.com or Amazon.com.

Non-CME educational product

Guideline	Poster	Flipchart	Binder	Pocket Guide
Alternative Views and Spectral Doppler Imaging for the TTE Protocol (JASE, January 2019)	X	X	X	X
Aortic Regurgitation (JASE, April 2017)	X	X	X	X
Aortic Valve Stenosis (JASE, April 2017)	X	X	X	X
Appropriate Use Criteria for Echocardiography (JASE, March 2011)			X	
Chamber Quantification of the Left Heart (JASE, January 2015)	X	X	X	X
Chamber Quantification of the Right Heart (JASE, January 2015)	X	X	X	X
Comprehensive TEE Exam (JASE, September 2013)	X		X	
Comprehensive TTE Scanning Maneuvers and Protocol (JASE, January 2019)	X	X	X	X
Image Acquisition and Display Using 3D Echocardiography (JASE, January 2012)	X	X	X	X
LV Diastolic Function (JASE, April 2016)	X	X	X	X
Mitral Regurgitation (JASE, April 2017)	X	X	X	X
Multimodality Cardiovascular Imaging of Patients with HCM (JASE, May 2011)	X	X	X	
Multimodality Imaging of Pericardial Disease (JASE, September 2013)	X	X	X	
Noninvasive Vascular Laboratory Testing (JASE, August 2006)	X	X		
Pediatric Echocardiography (JASE, December 2006)	X	X		
Performing Multiplane TEE (JASE, 1999)	X	X	X	
Prosthetic Valves with Echocardiography and Doppler Ultrasound (JASE, September 2009)	X	X	X	X
Quantification Methods for a Pediatric Echo (May 2010)	X	X	X	
Residual Valvular Regurgitation After Percutaneous Valve Repair or Replacement (JASE, April 2019)	X	X	X	X
Stress Echocardiography (JASE, September 2007)	X	X	X	
Tricuspid and Pulmonic Regurgitation (JASE, April 2017)	X	X	X	X
Ultrasound Enhancing Agents (Contrast) in Echocardiography (JASE, March 2018)	X	X	X	
Valve Stenosis	X	X	X	

Guideline Reference Binder

The ASE Guideline Reference Book offers a collection of charts and illustrations derived from ASE's guidelines for cardiovascular ultrasound. Books come in two convenient formats for quick reference. The three-ring binder is designed to accommodate new inserts as they are published. Each title can be included in the entire book or purchased as an individual insert. Perfect for use in the reading room. This book is a best-seller! Also available as an e-Book on ASEUniversity.org, this is a convenient format for quick reference and immediately includes new inserts as they are published.

Complete Binder (23 Inserts)

ASE Member: \$315 Nonmember: \$425

Individual Inserts

ASE Member: \$40 Nonmember: \$75

Bundle of Valve Binder Inserts (4 Inserts) This set includes: Aortic Regurgitation, Mitral Regurgitation, Tricuspid and Pulmonic Regurgitation, Aortic Valve Stenosis

ASE Member: \$60 Nonmember: \$90



Comprehensive TTE Scanning Maneuvers and Protocols Binder Insert Set (2 Inserts)

ASE Member: \$80 Nonmember: \$150



Comprehensive TTE Guideline Binder Insert Bundle (4 Comprehensive TTE Binder Inserts)

ASE Member: \$120 Nonmember: \$225

ASE Guideline Products

Guideline Reference Spiral

Enjoy the same collection of charts and illustrations offered in the ASE Guideline Reference Binder, but in the form of a clean, spiral-bound book. This version of the Guideline Reference Book is lighter and thinner, making it easier to travel with, but still providing a valuable tool for referencing ASE's guidelines for cardiovascular ultrasound.

*Purchase spiral annually (every June) to stay up-to-date on guidelines. See Guideline Reference Binder for guidelines included.

ASE Member: \$135 Nonmember: \$195

Guideline Posters

ASE's Guideline Posters are a visual representation of the guidelines and standards set by ASE. The designs are pleasing to the eye and suited for display in patient areas, clinics, reading rooms, and echo labs. These 24 in x 30 in (61 cm x 76 cm) posters will serve as a valuable resource for both physicians and sonographers.

Individual Posters

ASE Member: \$20 Nonmember: \$30

NEW Comprehensive TTE Scanning Maneuvers and Protocols Poster Set (2 Posters)

ASE Member: \$40 Nonmember: \$60

NEW Comprehensive TTE Guideline Poster Bundle (4 Comprehensive TTE Posters)

ASE Member: \$60 Nonmember: \$90

Bundle of Valve Posters (4 Posters) This set includes: Aortic Regurgitation, Mitral Regurgitation, Tricuspid and Pulmonic Regurgitation, Aortic Valve Stenosis

ASE Member: \$60 Nonmember: \$90

Guideline Flip Chart

Tabletop flip chart that includes 23 guideline posters that are reduced in size to 11 in x 14-3/4 in (28 cm x 37.5 cm), laminated, and presented in a vinyl heat-sealed binder.

Flip Chart Set

ASE Member: \$325 Nonmember: \$425

Individual Flip Charts

ASE Member: \$20 Nonmember: \$30

NEW Comprehensive TTE Scanning Maneuvers and Protocols Flip Chart Poster Set (2 Flip Chart Posters)

ASE Member: \$40 Nonmember: \$60

NEW Comprehensive TTE Guideline Flip Chart Poster Bundle (4 Comprehensive TTE Flip Chart Posters)

ASE Member: \$60 Nonmember: \$90

Bundle of Valve Flip Chart Posters (4 Flip Chart Posters)

This set includes: Aortic Regurgitation, Mitral Regurgitation, Tricuspid and Pulmonic Regurgitation, Aortic Valve Stenosis

ASE Member: \$60 Nonmember: \$90

Pocket Guidelines

These pocket-sized flipbooks of charts from select ASE guidelines and standards for cardiovascular ultrasound, were designed to be carried in lab coats and scrub pockets and used as quick reference guides for measurements.

Individual Pocket Guidelines

ASE Member: \$10 Nonmember: \$15

Bulk Rate: \$8 each for 100 or more

Comprehensive TTE Scanning Maneuvers and Protocols Pocket Guidelines Set (2 Pocket Guidelines) **NEW**

ASE Member: \$30 Nonmember: \$50

Comprehensive TTE Guideline Pocket Guideline Bundle (4 Comprehensive TTE Pocket Guidelines)

ASE Member: \$55 Nonmember: \$90

Bundle of Valve Pocket Guidelines (All 6 Valvular Pocket Guides) **NEW**

ASE Member: \$55 Nonmember: \$70

Bundle of Non-valvular Pocket Guidelines

(4 Non-valvular Pocket Guides)

ASE Member: \$30 Nonmember: \$40

Bundle of Pocket Guidelines (10 Pocket Guidelines)

*Excludes Comprehensive TTE Pocket Guidelines

ASE Member: \$95 Nonmember: \$105

Bulk Rate: \$93 each for 100 or more

Guideline Lab Bundle

With ASE's Guideline Lab Bundle, you can stock your lab with excellent products at a substantial savings. Included in the bundle is one Guideline Reference Book, one Guideline Poster Flipchart, and ten complete sets of Pocket Guides. Save over \$250 off individual pricing.

ASE Member: \$1,250 Nonmember: \$1,550

ASE Programs

Connect@ASE – ASE’s Networking Platform

Participate in the global conversation on ASE’s networking platform, Connect@ASE (Connect.ASEcho.org). This members-only site is the host for active discussion forums, an image library containing hundreds of moving images, and an enhanced member directory to connect with colleagues.

For more information, visit Connect.ASEcho.org

ASE Education Co-Sponsorship (without CME)

As an organization dedicated to excellence in cardiovascular ultrasound for patient care, ASE strives to promote and provide opportunities for enhancement of knowledge and skills of members and nonmembers through its educational programming. The purpose of ASE’s educational programs is to improve proficiency in the field of cardiovascular ultrasound, which is an important tool for optimal management of patients with heart disease.

A co-sponsorship agreement without CME is one whereby the submitting organization is an ACCME Accredited Provider responsible for the educational integrity of the program. ASE will endorse the educational activity, but assumes no CME responsibility; the submitting organization is responsible for providing CME and ensuring that the activity is conducted in accordance with all ACCME guidelines and policies. Multiple sponsorship levels are available, each with great marketing benefits to help drive course attendance. ASE accepts applications for co-sponsorship based upon topic, time frame, and target audience.

For full details, pricing, and to download a copy of the application, please visit ASEcho.org/ASE-sponsorship-opportunity.

Hospital CEU Programs

This program is designed for cardiac ultrasound and cardiovascular laboratories that hold monthly, in-house meetings related to echocardiography. Under the guidelines set forth by this program, sonographer attendees will be eligible for up to 12 ASE CEU credits per year from attendance at these meetings. ASE CEU credits are honored by ARDMS and CCI towards registry requirements for sonographers.

For labs up to 10 people: \$325

For labs with 11 – 25 people: \$425

For labs with 26 – 50 people: \$525

For labs with over 50 people: \$625

For more information, visit ASEcho.org/ceuprograms

Local Society CEU Program

ASE partners with local echocardiography societies to provide CEU to cardiovascular sonographers attending their meeting. Local echocardiography societies will be approved to offer up to 12 ASE CEU credits to attendees per year. ASE CEU credits are honored by ARDMS and CCI towards registry requirements for sonographers.

Application Fee: \$350

For more information, visit ASEcho.org/ceuprograms

How to Order Physical Products

ASE Members

1. Login to your member portal by selecting the “Login” button at the top of ASEcho.org.
2. Select “ASE Marketplace” from the top menu.
3. Select the category for your product or use the search toolbar above the category menu on the left hand side and locate it in the displayed list.
4. Select your product to see a detailed product description and to add the product to your cart.

Nonmembers

1. Navigate a web browser to Amazon.com/shops/ASE.
2. Locate the search bar near the top of the screen, and enter the product name.
3. Click the “Go” button to the right of the search bar to display the list of products.

Product Price Guide

Product	Availability	Credits	Member	Nonmember	Page
---------	--------------	---------	--------	-----------	------

GENERAL EDUCATION PRODUCTS

ASE Annual Scientific Sessions Online Library	Online		\$299	\$399	8
ASE's Comprehensive Echocardiography	Textbook; e-Book		\$199	\$229	9
Assessing Left Ventricular Diastolic Function	Online; DVD	CME, MOC, MOCA	\$175	\$250	8
Basics of Bubbles: What Every Clinician Should Know	Online ONLY	CME, MOC, MOCA	Free	Free	9
Best of ASE Per Volume	Online; DVD		\$75	\$95	9
Case-based Learning: Focus on Patient Safety	Online ONLY		\$75	\$95	9
Clinical Cases in Echocardiography: Focus on Congenital Heart Disease	Online ONLY		\$75	\$95	9
Case-based Series: Fundamentals of Strain Imaging	Online ONLY	CME, MOC, MOCA	\$95	\$150	10
Contrast-enhanced Echocardiography Lecture Series	Online ONLY	CME, MOC	Free	Free	10
Echocardiography Formula Review Guide: Native Valves and Intracardiac Pressures			\$20	\$40	10
Essentials for Proficiency in Basic Cardiovascular Ultrasound	Online with e-Book; DVD with workbook	CME, MOC	\$175	\$250	10
Focused Cardiac Ultrasound: Fundamentals of Acquisition and Interpretation	DVD ONLY		\$150	\$250	11
How to Perform a Transthoracic Echocardiographic Study	DVD ONLY		\$99	\$150	11
Pediatric and Congenital Heart Disease Lecture Series	Online ONLY		\$75	\$95	12
Proper Echocardiographic Measurements: How and Why*, 2nd Edition	Online; DVD	CME	\$175	\$250	12
Self-Study Program IV*	DVD ONLY	CME, MOC	\$175	\$250	13
Self-Study Program - Pediatric and Congenital Heart Disease	DVD ONLY	CME, MOC	\$175	\$250	13
Transesophageal Echocardiography in Perioperative Care	Online ONLY		\$75	\$95	13
Transesophageal Echocardiography in Structural Heart Disease*	Online; DVD	CME, MOC, MOCA	\$175	\$250	14
Utility of 3D Echocardiography: Promises and Perspectives*	Online; DVD	CME, MOC, MOCA	\$175	\$250	14

EXAM REVIEW PRODUCTS

Advanced Cardiac Sonographer Registry Review	Online with e-Book; DVD with workbook		\$150	\$250	15
ASCEXAM/ReASCE Review Course Online Library	Online ONLY		\$375	\$525	16
ASCEXAM/ReASCE Online Practice Exam Simulation	Online ONLY		\$199	\$250	16
Cardiovascular Sonographer Registry Review Guide	Online with e-Book; DVD with workbook		\$150	\$250	16

GUIDELINE PRODUCTS

ASE Guidelines Reference Binder	Binder with Inserts		\$315	\$425	17
ASE Guidelines Reference Binder Inserts			\$40	\$75	17
ASE Guidelines Reference Spiral	Spiral bound version of Binder		\$135	\$195	18
Pocket Guidelines	Individual Comprehensive TTE Scanning Maneuvers and Protocols Pocket Guidelines Set (2 Pocket Guidelines) Comprehensive TTE Guideline Pocket Guideline Bundle (4 Comprehensive TTE Pocket Guidelines) Bundle of Valve Pocket Guidelines (All 6 Valvular Pocket Guides) Bundle of Non-valvular Pocket Guidelines (4 Non-valvular Pocket Guides) Bundle (10 Pocket Guidelines)		\$10 \$30 \$55 \$55 \$30 \$95	\$15 \$50 \$90 \$70 \$40 \$105	18
Guideline Posters	Individuals Comprehensive TTE Scanning Maneuvers and Protocols Poster Set (2 Posters) Comprehensive TTE Guideline Poster Bundle (4 Comprehensive TTE Posters) Bundle of Valve Posters (4 Posters)		\$20 \$40 \$40 \$60	\$30 \$60 \$60 \$90	18
Guideline Posters Flip Chart	Individuals Comprehensive TTE Scanning Maneuvers and Protocols Flip Chart Poster Set (2 Flip Chart Posters) Comprehensive TTE Guideline Flip Chart Poster Bundle (4 Comprehensive TTE Flip Chart Posters) Bundle of Valve Flip Chart Posters (4 Flip Chart Posters) Flip Chart Set (23 Flip Chart Posters)		\$50 \$40 \$60 \$60 \$325	\$30 \$60 \$90 \$90 \$425	18
Guideline Lab Bundle			\$1,250	\$1,550	18

JASE, ONLINE ARTICLES, AND WEBINARS

CASE	Online ONLY		Free	Free	16
Journal of the American Society of Echocardiography (JASE)			Free	\$352/yr US	16
Articles	Online ONLY	CME, MOC	Free	\$25	19
Live Webinar Recordings, On Demand Webinars, and Guideline Reviews	Online ONLY	CME as noted	Free	\$25	20-22

*Multi user license pricing available

Membership in ASE: Learn more at ASEcho.org

ASE is the Society for Cardiovascular Ultrasound Professionals™. Over 17,000 physicians, sonographers, nurses, veterinarians, and scientists are members of ASE, making it the largest global organization for cardiovascular ultrasound imaging and as such the leader and advocate, setting practice standards and guidelines for the field. The Society is committed to advancing cardiovascular ultrasound to improve lives. For more information about ASE, visit: ASEcho.org.

ASE Membership Benefits

Valuable Education, Products, and Career Resources

ASE Guidelines – With over 70 published recommendations, these documents not only provide the foundation for the daily clinical practice of echocardiography worldwide, they are the core of ASE. Many guidelines have been translated into languages other than English.

Free Monthly ACCME Approved CME Webinars – Presentations by renowned echo leaders with dedicated Q & A time.

Journal of the American Society of Echocardiography (JASE) – A monthly subscription to learn and stay current in the field of echocardiography through original, peer-reviewed articles (valued at \$421 per year).

CASE – Reduced publication fees for ASE's online, open-access, cardiovascular imaging case reports journal.

eCASE Based Learning – Online, open-access case reports journal offering free CME for ASE members. Each activity includes four articles published in CASE, and offers 1.0 CME credit.

The Echo – A weekly eNewsletter to help keep you informed about changes in your industry, ASE news, educational opportunities and upcoming events.

Echo Headlines – A news bulletin, developed in partnership with BulletinHealthcare, is delivered directly to members' inboxes on Monday, Tuesday, Thursday, and Friday mornings to keep members up-to-date on the most current medical, policy, and research news related to cardiovascular ultrasound.

Discounted Live Educational Courses – Learn from the experts and network with colleagues.

Online Continuing Education at ASEUniversity – Currently over 30 free CME credits are included with ASE memberships.

CME and MOC Reporting – Regular transferral of CME earned through ASE to the American Board of Internal Medicine (ABIM), American Board of Pediatrics (ABP), American Board of Anesthesiology (ABA), American Registry for Diagnostic Medical Sonography (ARDMS), and Cardiovascular Credentialing International (CCI).

Product Discounts – Receive an average of 30% off most ASE educational products including textbooks and DVD's.

Peer-to-Peer Networking – Connect@ASE allows members to network with like-minded echo enthusiasts through private online forums, interactive member directory, blogs, communities, mentor match, and more.

Digital Image Library – Members can share echo images for educational purposes.

Fellow of the American Society of Echocardiography (FASE) – The FASE credential recognizes the dedicated ASE member with an extraordinary commitment to the field of cardiovascular ultrasound. This designation is a peer-review process.

Special Interest Councils – Councils are open to all ASE members regardless of their area of practice. Councils include: Cardiovascular Sonography, Pediatric and Congenital Heart Disease, Perioperative Echocardiography, and Circulation & Vascular Ultrasound.

ASE Advocacy Efforts – ASE represents our members, while advocating to create an environment for excellence in the quality and practice of cardiovascular ultrasound. ASE's role as the voice of echocardiography on Capitol Hill, to federal agencies, and among private payers is unquestionably of great, and ever-increasing, importance.

Reimbursement and Coding Assistance – ASE's provides an annual coding newsletter and reimbursement updates. Members also have access to ASE's coding expert for specific questions about reimbursement.

Research and Travel Grants – Council and ASE Foundation grants for physicians, sonographers, and student members only.

Service on ASE Committees and Boards – ASE members are encouraged to apply for open positions to increase their involvement in the Society, influence the creation of guidelines and standards, educational courses, products, and much more.

Leadership Academy – This program provides a unique opportunity for ASE members to increase their knowledge and develop a skill set that will help them in their careers and personal life.

ASE's Mission

To advance cardiovascular ultrasound and improve lives through **excellence** in education, research, innovation, advocacy, and service to the **profession and the public**.

Join ASE today at ASEcho.org/Join

ASE strives to maintain low membership fees while offering an extremely wide range of benefits to the cardiovascular imaging professional. International dues are available to anyone who resides outside the United States.

Membership Type	United States	International ** (online JASE only)
Physician/Scientist	\$345	\$115
Sonographer/Allied Health*	\$175	\$115
Rising Star (completed training within last two years)	\$160	\$100
Fellow, Student, Sonographer/Allied Health Student ++	\$75 (online JASE only)	\$75
Professional Industry Affiliate**	\$345	\$345
Veterinarian	\$100	\$100
Retired	\$100	\$100

A print subscription to the *Journal of the American Society of Echocardiography* (JASE) is included in the dues rates, unless noted above with++. All fees are in US dollars.

* The Allied Health category includes sonographers, nurses, physician assistants, and veterinarians.

** Individuals with an interest in cardiovascular ultrasound that are not professional healthcare practitioners, such as Hospital Administrators, Industry Professionals, and Media.

++ A print subscription can be added to these membership types for an additional \$90 USD.

Nidhish Tiwari, MD, FASE
Associate Director
North Central Bronx Hospital
Bronx, NY



Cindy Laliberte, RDCS, FASE
Supervisor, Echo Lab
Akron Children's Hospital
Akron, OH



Experts in the field hold the designation of
FASE

Yvette Carvallo, RDCS, RVS, FASE
Lead Cardiovascular
Sonographer
Overlook Medical Center
Summit, NJ



Massimiliano Meineri, MD, FASE
Staff Anesthesiologist,
Director Perioperative TEE
Toronto General Hospital
Toronto, ON, Canada



Melissa Tracy, MD, FASE
Associate Professor
of Medicine
RUSH University
Medical Center
Chicago, IL



Joshua D. Quick, MD, FASE
Cardiothoracic Anesthesiologist
VA Connecticut Healthcare System
West Haven, CT



Alison White, BSc, MSc, DMU (cardiac), AMS, SFHEA, FASE
Program Director and
Senior Lecturer
Griffith University
Brisbane, Queensland,
Australia



Want to achieve a FASE designation?
A variety of specialists, in addition to cardiologists, can now meet application criteria. Apply at ASEcho.org/FASE.



FASE Fellow of
American Society of
Echocardiography



ASE American Society of
Echocardiography

American Society of Echocardiography

ASE 2020

THE NEXT
MILLENNIUM

Register Today

**Gaylord Rockies Resort and
Convention Center
Denver, Colorado**

June 19-22, 2020

ASEScientificSessions.org



2530 Meridian Parkway, Suite 450
Durham, NC 27713 USA

Phone: 919.861.5574 *Fax:* 919.882.9900

ASEcho.org
SeeMyHeart.org

Connect with ASE



Facebook.com/asecho



@ASE360



Pinterest.com/ASE360



@ASE360



Connect.asecho.org



ASE360



The American Society of Echocardiography