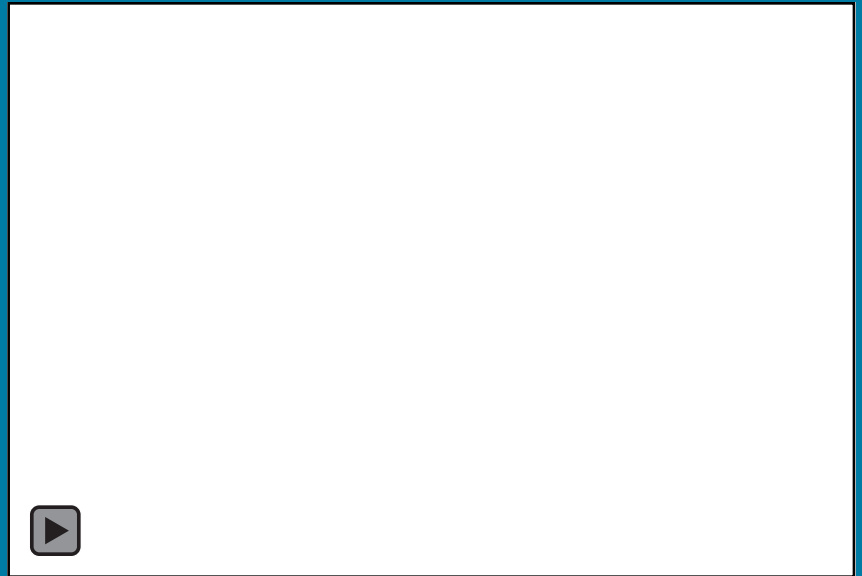
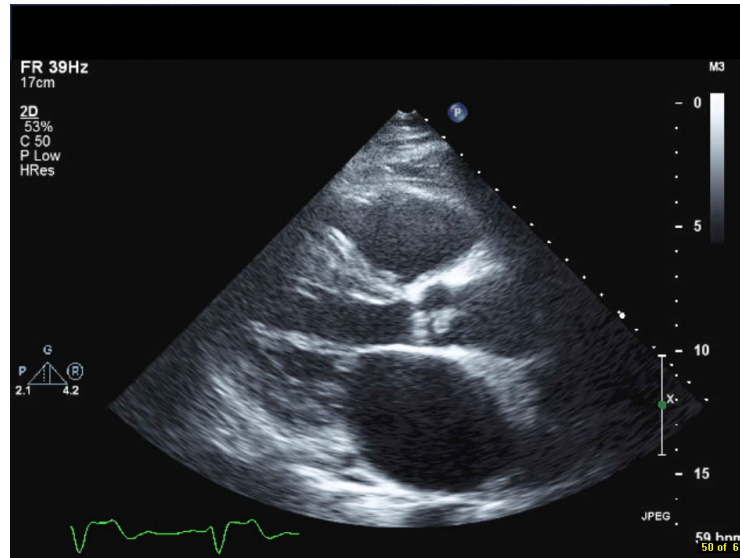


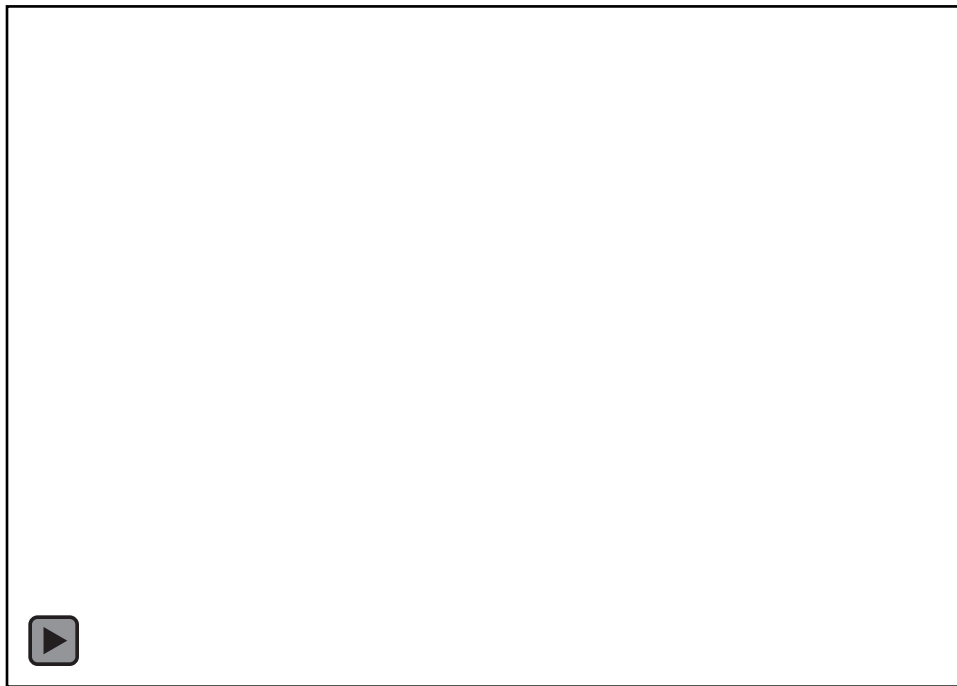
Can You Make the Diagnosis on 1 Clip ?

Michael H. Picard, MD, FASE
No Disclosures

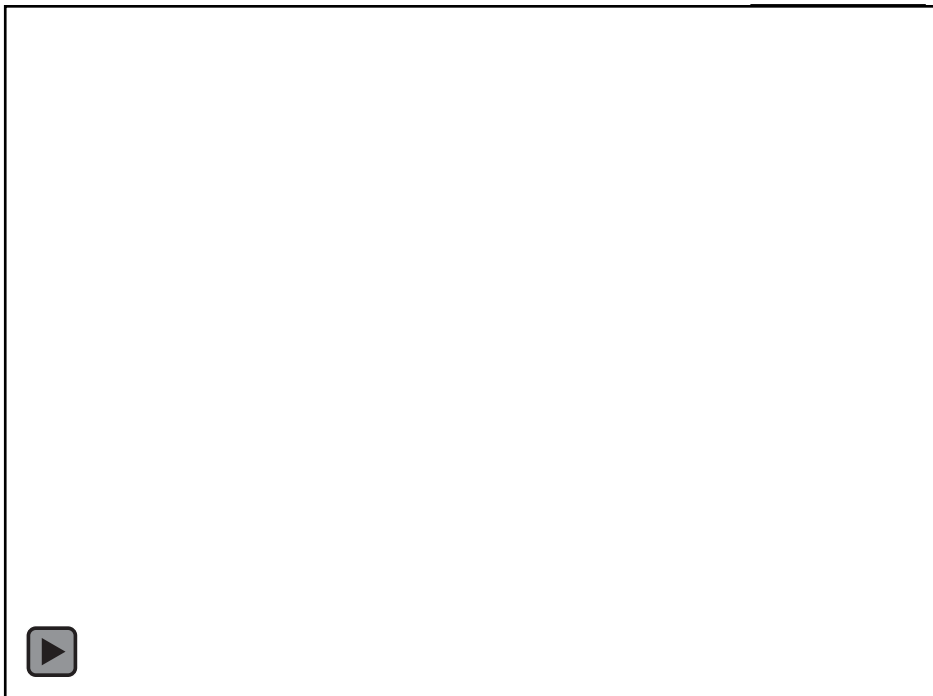


52 yo F, TTE for source of embolus



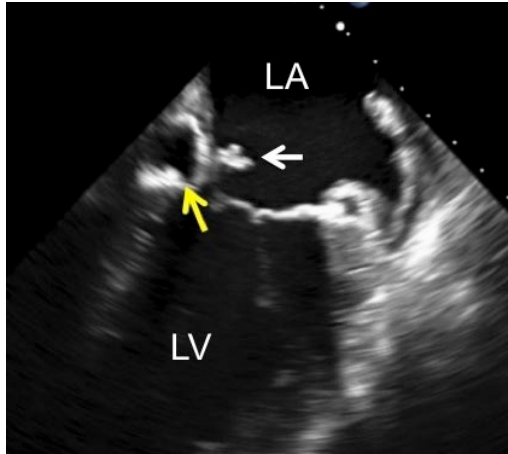






Caseous Mitral Annular Calcification

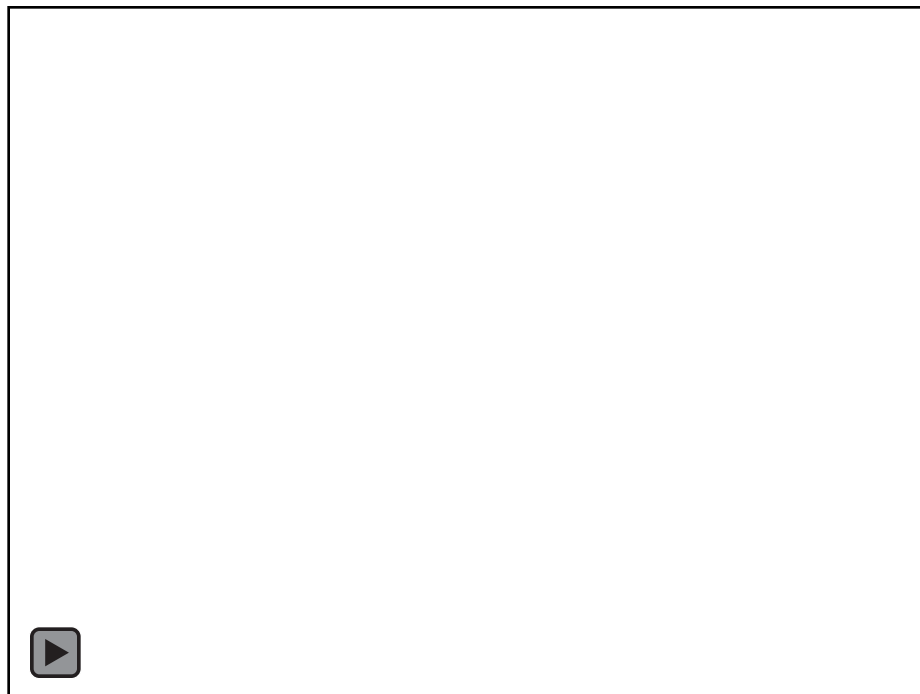
liquefaction necrosis of calcium



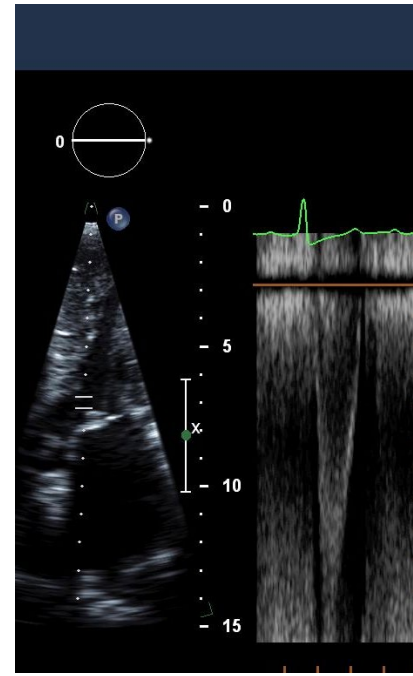
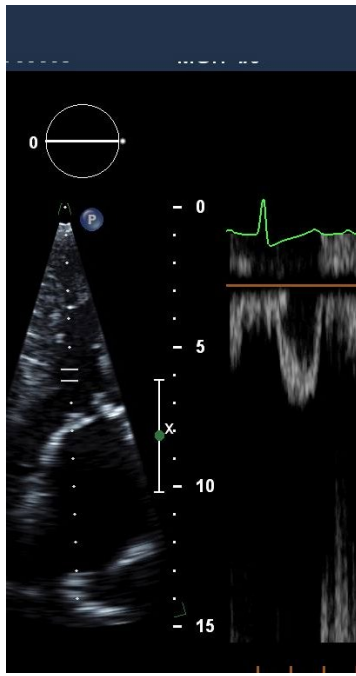
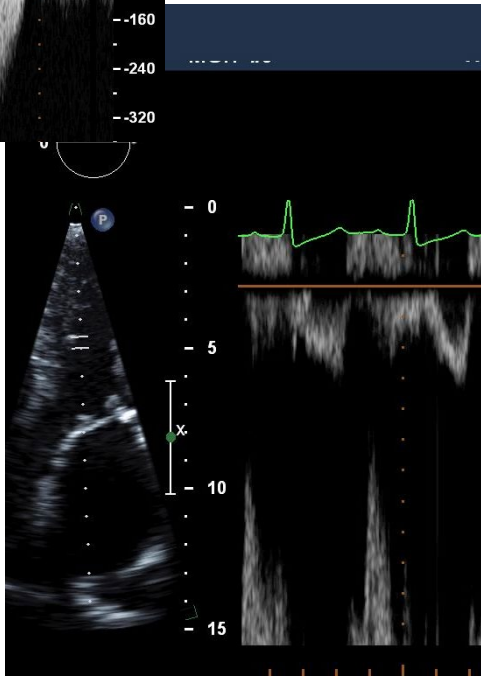
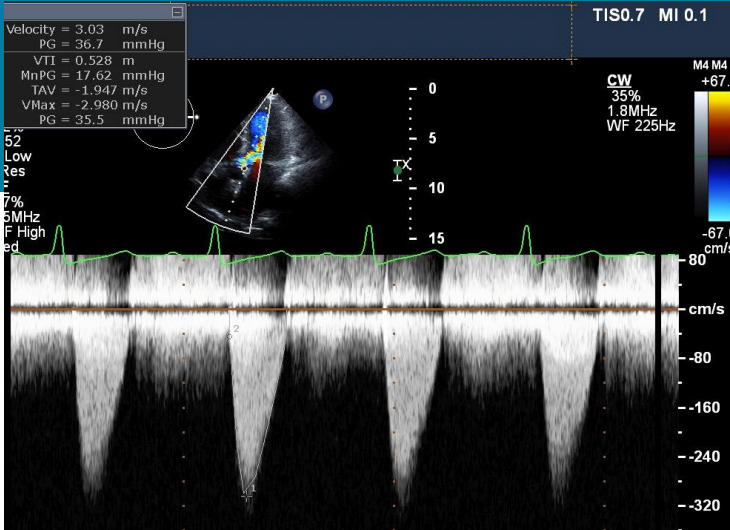
- Echo findings:
 - Posterior annulus
 - Echo brightness : suggestive of calcification
 - Central areas of echolucency (liquefied contents)
- Usually benign.
- Often mistaken for cardiac tumor, abscess.
- Rare complications: emboli, local compression















MASSACHUSETTS
GENERAL HOSPITAL

CORRIGAN MINEHAN
HEART CENTER









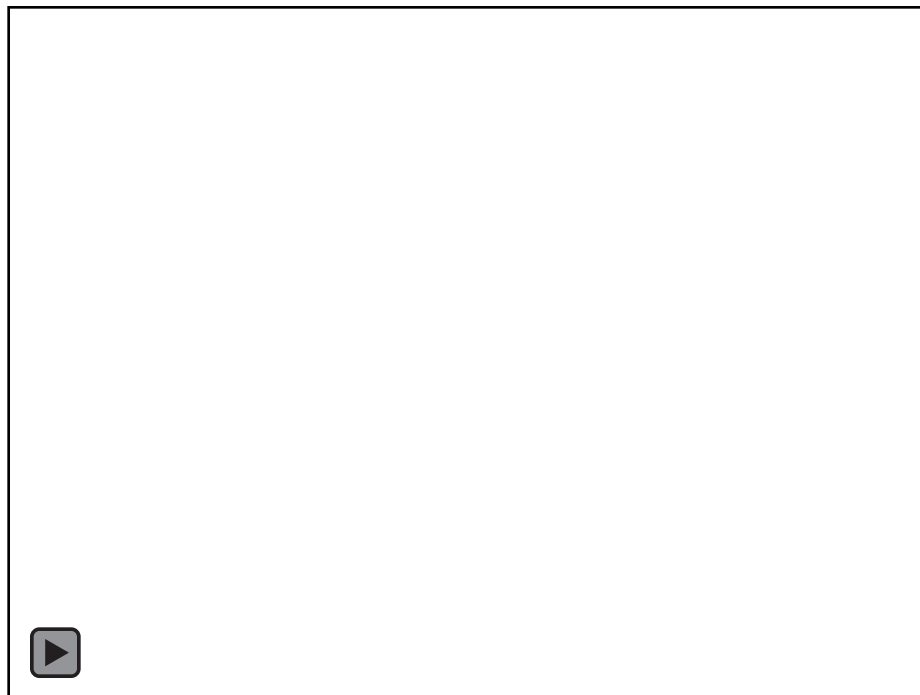
MASSACHUSETTS
GENERAL HOSPITAL

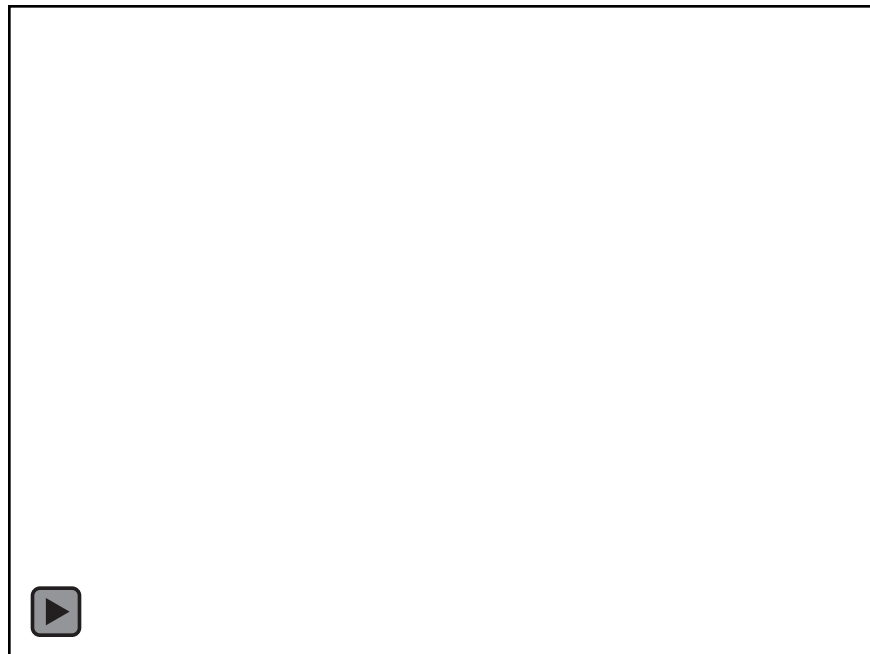
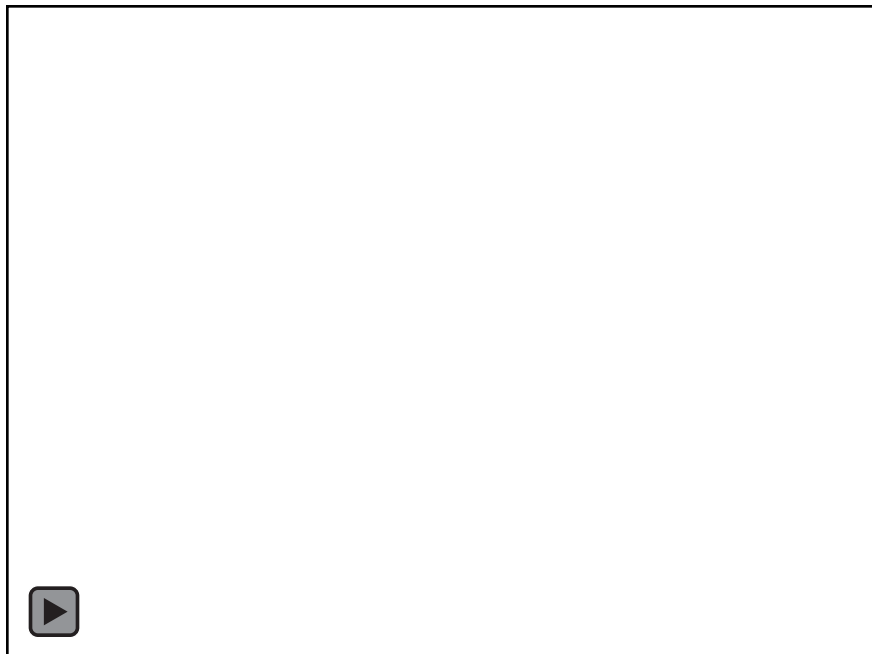
CORRIGAN MINEHAN
HEART CENTER











AR Mechanism in Acute Type A Aortic Dissection

Movsowitz et al, JACC 2000;36:884-90



Normal anatomy



Incomplete leaflet closure – STJ dilation



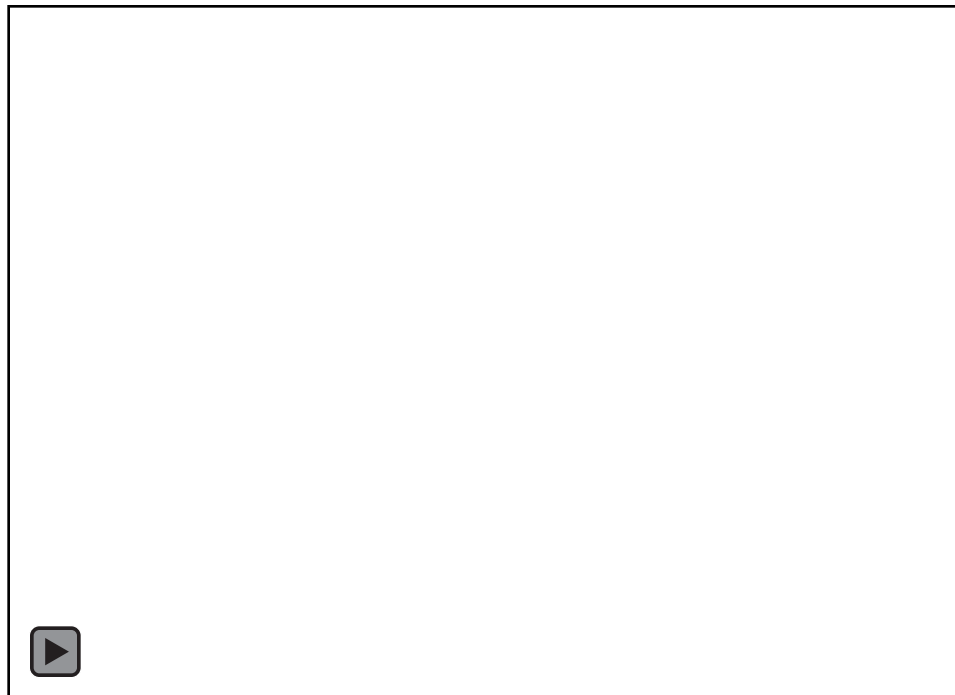
Leaflet prolapse



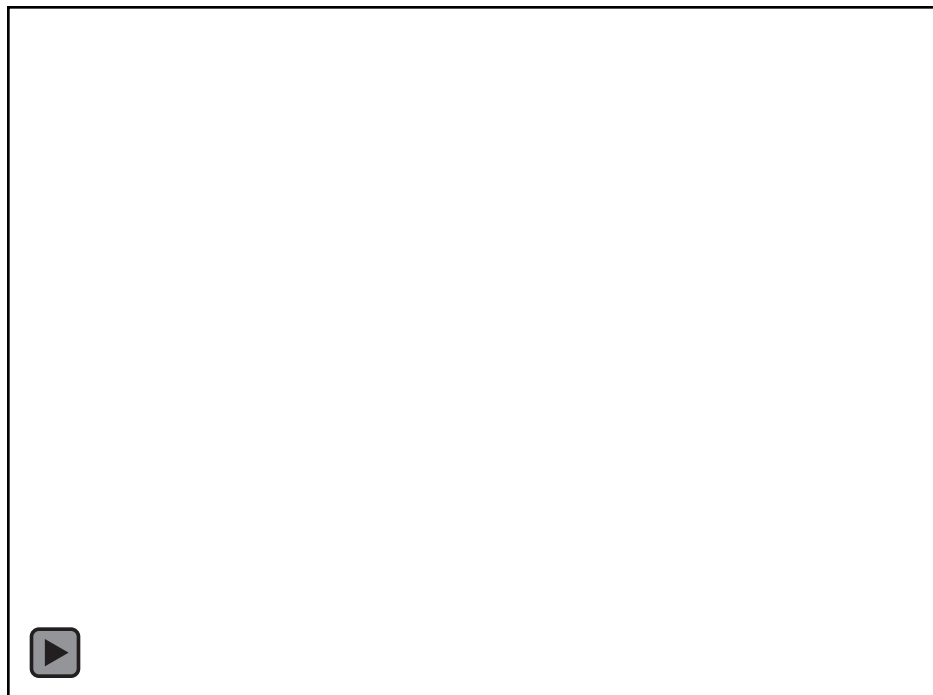
Flap prolapse



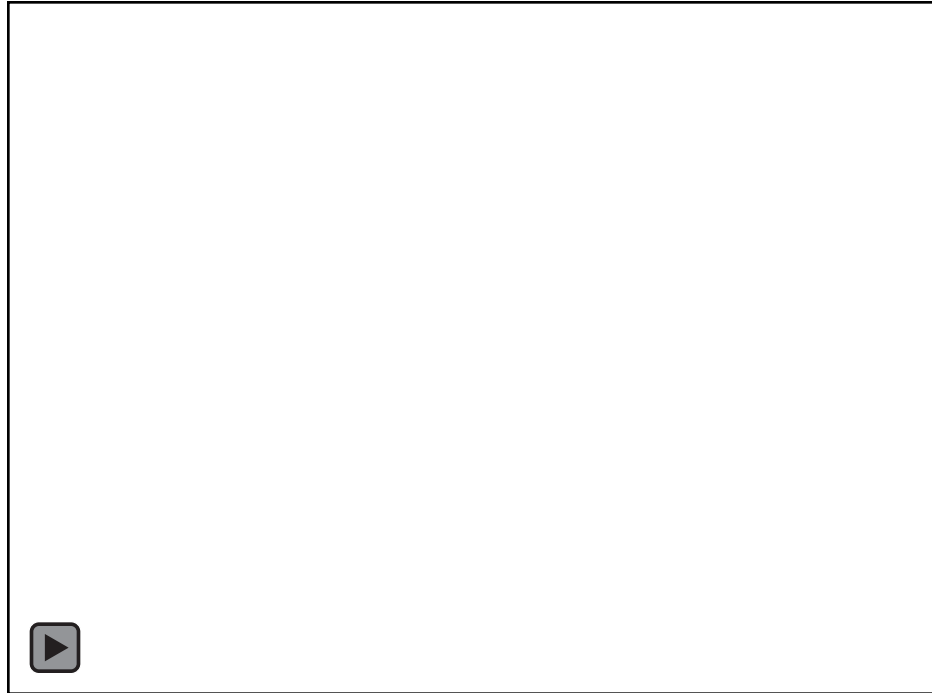








Diagnosing on 1 clip can be dangerous, look at all views !



A photograph of the Massachusetts General Hospital (MGH) skyline at dusk. The sky is a deep blue, and the buildings are illuminated from within, with some windows glowing yellow. In the foreground, there are trees with autumn foliage and a body of water reflecting the lights. The text "Thank you" is overlaid on the left side of the image.

Thank you



MASSACHUSETTS
GENERAL HOSPITAL