

ECHO FLORIDA™

ANNUAL



ADVANCE PROGRAM

October 7 – 9, 2023

Disney's Yacht & Beach Club Resorts

Walt Disney World® Resort - Lake Buena Vista, FL

Course Director

Linda D. Gillam, MD, MPH, FASE

Past President, ASE

Morristown Medical Center

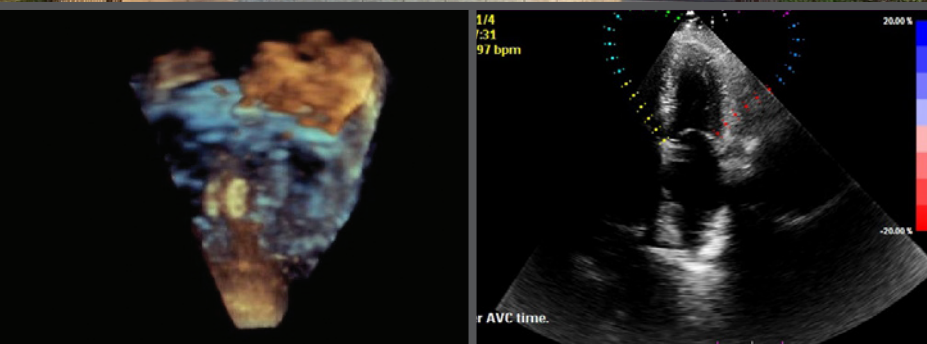
Morristown, NJ

Course Co-Director

Matt Umland, ACS, RDCS, FASE

Aurora Health Care

Milwaukee, WI



Register now at ASEcho.org/EchoFlorida



Jointly provided by ASE and the ASE Foundation.

Program Information

Course Overview

Echo Florida is a comprehensive review of echocardiography, including dedicated sessions on cardiomyopathies, coronary artery disease (including stress testing), valvular heart disease, pericardial disease, heart failure, emerging technologies, complex congenital heart disease and case-based demonstrations on the role of 2D, and real time 3D/4D echocardiography, as well as strain imaging.

Course Learning Objectives

Upon completion of these sessions, participants will be better able to:

1. Know the echocardiographic features of aortic, mitral, tricuspid, and pulmonic valve disease (stenosis and regurgitation).
2. Be able to quantitate valve stenosis and regurgitation and help select appropriate interventions.
3. Identify hypertrophic cardiomyopathy.
4. Identify simple and complex congenital disease.
5. Use echocardiography to diagnose and manage pericardial disease.
6. Use echocardiographic strain, 3D imaging and ultrasound enhancing agents to optimize the information obtained from echocardiography

Who Should Attend

This course is designed for adult and pediatric cardiologists, cardiovascular surgeons, cardiovascular anesthesiologists, cardiac radiologists, fellows in training, cardiovascular sonographers, cardiovascular nurse specialists, internists, intensivists, and emergency physicians with special interest in clinical cardiology and echocardiography.

Course Registration

Registration fees include breakfast, lunch, refreshment breaks, CME/MOC credit, access to presentation PDFs (excluding workshop sessions), and access to conference recordings for 90 days. ASE members take advantage of reduced registration fees as a benefit of membership. Register online at ASEcho.org/EchoFlorida.

Workshops – Optional Small Group Sessions

Small group workshops offer registered participants the opportunity to get one-on-one time with faculty in a hands-on learning experience. Workshops are included with the registration fee and in the total number of CME credits offered. Pre-registration is required.

Accreditation and Designation

The American Society of Echocardiography is accredited by the Accreditation Council for Continuing Medical Education to provide continuing medical education for physicians.

The American Society of Echocardiography designates this in-person activity for a maximum of **23.5 AMA PRA Category 1 Credits™** (pending approval).



To claim all 23.5 CME credits you must attend two of the workshop sessions. Participants should claim only the credit commensurate with the extent of their participation in the activity.

Successful completion of this CME activity, which includes participation in the evaluation component, enables the participant to earn up to **23.5 MOC points in the American Board of Internal Medicine's (ABIM) Maintenance of Certification (MOC) program, the American Board of Pediatrics (ABP) MOC program, and/or The American Board of Anesthesiology® (ABA) Maintenance of Certification in Anesthesiology Program® or MOCA®, (pending approval).**

Participants will earn MOC and/or MOCA points equivalent to the amount of CME credits claimed for the activity. It is ASE's responsibility to submit participant completion information to ACCME for the purpose of granting ABA MOCA and/or ABIM MOC points.

ARDMS, CCI, and Sonography Canada recognize ASE's certificates and have agreed to honor the CME credit hours toward their registry requirements for sonographers.

This activity has been reviewed by the **AAPA Review Panel** and is compliant with AAPA CME Criteria. This activity is designated for 23.5 AAPA Category 1 CME credits. PAs should only claim credit commensurate with the extent of their participation. Approval is valid from 10/7/2023 to 10/9/2023. AAPA reference number: CME-209329.

ASE's 11th Annual Echo Florida has been reviewed by the **British Society of Echocardiography** and is approved for up to 15 BSE Points (5 for full day; 3 for half day).



Maintenance of Certification in Anesthesiology Program® and MOCA® are registered certification marks of the American Board of Anesthesiology®. MOCA 2.0® is a trademark of the American Board of Anesthesiology®.

Location Information & Accommodations

Disney's Yacht & Beach Club Resort

Top Five Reasons to Stay at Disney's Yacht & Beach Club Resort During the 11th Annual Echo Florida:

1. No need to travel to another venue - everything takes place under one roof!
2. Take advantage of all Disney World has to offer, with EPCOT a short walk from the resort and complimentary transportation between the hotel and parks available through Disney's Bus Service.
3. Dine at any of the 10 onsite restaurants and lounges, including a '50's themed soda shop and a waterside walk-up bar.
4. Explore Stormalong Bay, an expansive sand-bottomed pool located right at the resort! Have fun at the lazy river, waterslides, and whirlpool spas. Or, go for a dip in one of the three leisure pools on the property.
5. Enjoy a huge array of family-friendly activities, such as watercraft rentals, mini golf courses, and nightly campfires.

Make Time for the Magic!

As a Disney Resort Guest, you will enjoy special benefits that make your Walt Disney World® stay easier and more relaxing than ever. These benefits provide everything from extra time in the Theme Parks to convenient transportation.

Special ticket options are available for meeting attendees. You must purchase online at MyDisneyGroup.com/EchoFL2023 or call **407-939-4686** to receive these special Theme Park tickets. If you plan on visiting a Theme Park, please be aware that to enter a park both a park reservation and valid admission for the same park on the same date are required for all guests ages 3 and up.

Plan your Walt Disney World vacation by setting up a My Disney Experience account. You can manage your Disney Resort reservation, purchase your Theme Park tickets and, access Resort transportation routes all with the touch of your finger. Set up an account at MyDisneyExperience.com and download the mobile app from the Apple Store or Google Play Store.

Accommodations

ASE has secured a block of rooms at a discounted rate of \$315 per night plus tax (based on single/double occupancy) at **Disney's Yacht & Beach Club Resort**. Hotel reservations and Theme Park tickets can be booked online at MyDisneyGroup.com/EchoFL2023 or by contacting Disney directly at **407-939-4686**. Agents are available Monday – Friday 8:30 AM – 6:00 PM ET and over the weekend 8:30 AM – 5:00 PM ET. Please specify that you are with the "American Society of Echocardiography" to secure the group rate. Please note: **The ASE block of rooms is designated for Echo Florida attendees, only. Reservations without an accompanying Echo Florida registration are subject to being released.** To avoid complications, please first register for the conference and then make your hotel room reservations.

We encourage you to book your hotel accommodations as soon as you register for the course. The room block will be held until **Wednesday, September 6, 2023**, or until the block is sold out. After this date, reservations will be accepted on a space-available basis. A deposit equal to one night's stay plus tax is required to hold each reservation. Deposits will be forfeited for any cancellations occurring five days or less prior to arrival.

Take advantage of group rates* and add a few extra days for a spectacular golf or spa getaway, or the perfect vacation with family and friends.

*Subject to availability of group rate rooms, ASE rooms may be reserved at the discounted group starting Monday, October 2, 2023 through Friday, October 13, 2023. Group rates may not be combined with any other discounts or offers.



© Disney

Invited Faculty

Schedule of Events

Course Director



Linda D. Gillam, MD, MPH, FASE
Past President, ASE
Morristown Medical Center
Morristown, NJ

Course Co-Director



Matt Umland, ACS, RDCS, FASE
Aurora Health Care
Milwaukee, WI

Faculty

Gerard Aurigemma, MD, FASE
UMass Memorial Medical Center
Worcester, MA

Yvette Carvalho, RDCS, RVS, FASE
Morristown Medical Center
Morristown, NJ

Benjamin Eidem, MD, FASE
President, ASE
Mayo Clinic
Rochester, MN

Judy Hung, MD, FASE
Past President, ASE
Massachusetts General Hospital
Boston, MA

Allan Klein, MD, FASE
Past President, ASE
Cleveland Clinic
Cleveland, OH

Konstantinos Koulogiannis, MD
Morristown Medical Center
Morristown, NJ

Deborah Kwon, MD, FASE
Cleveland Clinic
Cleveland, OH

Leo Marcoff, MD, FASE
Morristown Medical Center
Morristown, NJ

Vincent Sorrell, MD, FASE
University of Kentucky
Lexington, KY

Lissa Sugeng, MD, MPH, FASE
Northwell Health
Manhasset, NY

Friday, October 6, 2023

4:00 – 6:00 PM **Registration**

Saturday, October 7, 2023

The Basic Tools in the Toolbox

6:45 AM	Registration, Breakfast, and Visit Exhibits
7:15 AM	Welcome and Logistics <i>L. Gillam</i>
7:30 AM	President's Welcome <i>B. Eidem</i>
7:45 AM	“C'est LAVi!” Optimizing Left Sided Chamber Assessment <i>G. Aurigemma</i>
8:10 AM	On The Main Stage: Approaches to Assessing Left Ventricular Systolic Function <i>V. Sorrell</i>
8:35 AM	Getting Your “Fill:” Basic Diastolic Physiology and Assessment <i>G. Aurigemma</i>
9:00 AM	Strain Imaging: What, How, Why, and When <i>A. Klein</i>
9:25 AM	On The Front Line: How to Optimize Strain <i>M. Umland</i>
9:40 AM	No Longer Playing Second Fiddle: How to Assess the Right Heart! <i>L. Sugeng</i>
10:05 AM	Question and Answer
10:20 AM	Refreshment Break and Visit Exhibits

“Excellent course with great instructors. Covered a large number of clinically relevant topics with practical hands on advice.”

– Echo Florida Attendee

Schedule of Events

10:50 AM	Diastolic Function: Normal? Abnormal? Truly Indeterminate? Help! How to Reconcile Conflicting Results (Cases) <i>G. Aurigemma, A. Klein</i>
11:15 AM	3D How-To: Acquisition, Cropping, and Display <i>L. Sugeng</i>
11:40 AM	3D for TTE: Practice Makes Perfect: Tips for the Sonographer <i>M. Umland</i>
12:05 PM	Question and Answer
12:30 PM	Lunch and Visit Exhibits
1:00 – 2:00 PM	Science & Technology Theater Presentation <i>Sponsored by Bristol-Myers Squibb</i>
2:00 PM	Break
2:30 PM	How I Do a TEE: Tricks of the Trade <i>K. Koulogiannis</i>
2:50 PM	I Could Not Have Done it Without 3D: Cases <i>K. Koulogiannis, L. Marcoff, L. Sugeng</i>
3:20 PM	Stress Echocardiography I: Coronary Artery Disease? Treadmill, Bicycle, and Pharmacologic (Cases) <i>V. Sorrell</i>
3:40 PM	Stress Echocardiography II: Non-Coronary Artery Disease Indications – Why, When, and How (Cases) <i>L. Gillam</i>
4:00 PM	Stress Tips for Sonographers <i>Y. Carvallo</i>
4:10 PM	Question and Answer
4:30 PM	Refreshment Break, General Session Adjourn

Workshops – Optional Small Group Sessions	
4:45 – 5:30 PM	Session 1
	Breakout Room 1: TEE Simulation: How to Get Those Hard-to-Get Views <i>J. Hung, K. Koulogiannis, L. Marcoff, L. Sugeng</i>
	Breakout Room 2: Strain: How to Get it Right <i>G. Aurigemma, M. Umland</i>
5:45 – 6:30 PM	Session 2
	Breakout Room 1: TEE Simulation: How to Get Those Hard-to-Get Views <i>J. Hung, K. Koulogiannis, L. Marcoff, L. Sugeng</i>
	Breakout Room 2 Strain: How to Get it Right <i>G. Aurigemma, M. Umland</i>
6:30 PM	Adjourn

Sunday, October 8, 2023	
Doorways Through Your Heart: Valvular Heart Disease	
6:30 AM	Breakfast and Visit Exhibits
7:15 AM	Saturday Round Up: Questions You Forgot to Ask <i>L. Gillam</i>
7:30 AM	Aortic Stenosis: Area, Gradients, Flow? Core Concepts in Aortic Stenosis <i>J. Hung</i>
8:00 AM	How Echo Assesses Aortic Stenosis: Trying to Get It Right <i>Y. Carvallo, M. Umland</i>
8:25 AM	Dobutamine Stress Echo for Low Flow Low Gradient Aortic Stenosis: When and How <i>L. Marcoff</i>
8:45 AM	Aortic Regurgitation: Getting the Complete Picture – Why and How Much? Illustrative Cases <i>J. Hung</i>
9:05 AM	Goofs, Coups, and Aortic Cases I Will Never Forget <i>J. Hung, L. Marcoff</i>
9:35 AM	No Longer Forgotten: The Tricuspid and Pulmonic Valves <i>B. Eidem, L. Sugeng</i>
10:05 AM	Question and Answer
10:25 AM	Refreshment Break and Visit Exhibits
10:55 AM	Mitral Regurgitation: Primary, Secondary, and Proportionality – Core Concepts and Controversy <i>L. Gillam</i>
11:20 AM	Grading Mitral Regurgitation: It Is Complicated <i>J. Hung</i>
11:45 AM	“The Half-Time Show:” Quantitation of Rheumatic and Calcific Mitral Stenosis <i>G. Aurigemma</i>
12:00 PM	Options for Mitral Stenosis Treatment: Planning and Monitoring <i>K. Koulogiannis</i>
12:25 PM	Question and Answer
12:35 PM	Lunch and Visit Exhibits
1:05 – 2:05 PM	Science & Technology Theater Presentation <i>Sponsored by Siemens Healthineers</i>
2:05 PM	Break
2:35 PM	Endocarditis: Multimodality Imaging <i>D. Kwon, L. Marcoff</i>
3:00 PM	Prosthetic Valves: Not Quite Good as New <i>L. Sugeng</i>
3:20 PM	Valvular Heart Disease: The Important Contributions of CT and MRI <i>D. Kwon</i>

Schedule of Events

3:45 PM	POCUS: Here Today and Here Tomorrow – Current Capabilities and Applications <i>V. Sorrell</i>
4:10 PM	Cardio-Oncology: When the Two Deadliest Diseases Collide <i>L. Gillam</i>
4:30 PM	Question and Answer
4:50 PM	Refreshment Break, General Session Adjourn

Workshops – Optional Small Group Sessions

5:00 – 5:45 PM	Session 1
	Breakout Room 1: TEE Simulation: How to Get Those Hard-to-Get Views <i>J. Hung, K. Koulogiannis, L. Marcoff, L. Sugeng</i>
	Breakout Room 2: 3D for Sonographers: How to Acquire and Display Key Views (TTE and TEE) <i>Y. Carvalho, M. Umland</i>
	Breakout Room 3: Cases from CASE <i>V. Sorrell</i>
5:45 PM	Adjourn

Monday, October 9, 2023

Echocardiographic Potpourri

6:30 AM	Breakfast and Visit Exhibits
7:15 AM	Welcome and Summary of Day 2: Questions That Kept You Awake <i>L. Gillam</i>
7:30 AM	When You Need a Helping Hand: What You Need to Know About Assist Devices <i>K. Koulogiannis</i>
7:55 AM	I Can See Clearly Now – Cases Where Contrast Administration Makes a Difference <i>Y. Carvalho, L. Gillam</i>
8:20 AM	Imaging in the Adult Patient with Congenital Heart Disease <i>B. Eidem</i>
8:50 AM	The Chameleon: Constrictive Pericarditis <i>A. Klein</i>

9:20 AM	Diseases of the Aorta <i>D. Kwon</i>
9:45 AM	Question and Answer
10:00 AM	Refreshment Break and Visit Exhibits
10:25 AM	Hypertrophic Cardiomyopathy and HCM Mimics: An Echo-MRI Collaboration: Echocardiography <i>L. Gillam</i>
10:50 AM	Hypertrophic Cardiomyopathy and HCM Mimics: An Echo-MRI Collaboration: MRI <i>D. Kwon</i>
11:10 AM	Amyloid Heart Disease: A Multimodality Approach <i>V. Sorrell</i>
11:25 AM	Wow and Oh No! Structural Heart Cases I Will Never Forget <i>J. Hung, L. Marcoff</i>
11:55 AM	Stress Cardiomyopathy: Helping the Octopus Escape the Pot <i>V. Sorrell</i>
12:15 PM	Question and Answer
12:30 PM	Lunch and Visit Exhibits
1:00 – 2:00 PM	Science & Technology Theater Presentation <i>Sponsored by Pfizer Inc</i>
2:00 PM	Break

In The Home Stretch: Cases to Fill Your Mental Imaging Library

2:30 PM	True Confessions: When We Got It Wrong <i>G. Aurigemma, L. Gillam, V. Sorrell</i>
2:55 PM	Amazing Cases in Congenital Heart Disease <i>B. Eidem</i>
3:15 PM	Medical Emergencies: When You Need to Think Fast! <i>L. Marcoff, M. Umland</i>
3:45 PM	What I See in My Crystal Ball: The Future of Echo – Artificial Intelligence and Beyond <i>B. Eidem, L. Gillam, V. Sorrell, L. Sugeng, M. Umland</i>
4:15 PM	Going, Going, Gone: Last Call for Questions <i>All Faculty</i>
4:45 PM	Adjourn

“The course was excellent in the way it was run and presentation of the content.”

– Echo Florida Attendee



ASE Foundation

American Society of Echocardiography
2530 Meridian Parkway
Suite 450
Durham, NC 27713

ECHO FLORIDA™

October 7–9, 2023

Disney's Yacht & Beach Club Resorts

Walt Disney World® Resort - Lake Buena Vista, FL

REGISTER NOW at

ASEcho.org/EchoFlorida



Course Director
Linda D. Gillam, MD, MPH, FASE
Past President, ASE
Morristown Medical Center
Morristown, NJ



Course Co-Director
Matt Umland, ACS, RDCS, FASE
Aurora Health Care
Milwaukee, WI