

# ECHO FLORIDA™

# ANNUAL



## FINAL PROGRAM

**October 7 – 9, 2023**

*Disney's Yacht & Beach Club Resorts*

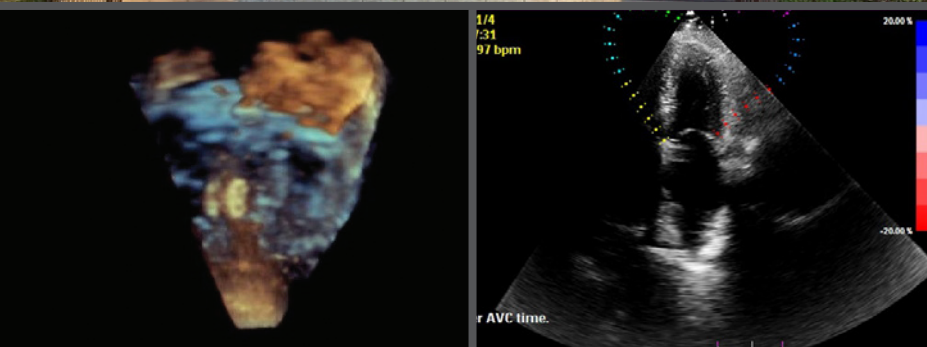
*Walt Disney World® Resort - Lake Buena Vista, FL*

### Course Director

Linda D. Gillam, MD, MPH, FASE  
Past President, ASE  
Morristown Medical Center  
Morristown, NJ

### Course Co-Director

Matt Umland, ACS, RDCS, FASE  
Aurora Health Care  
Milwaukee, WI



# Welcome Message and Faculty

## Welcome Message

Welcome to our 11th Annual Echo Florida course! Along with our expert faculty and the ASE team we hope to provide you with a comprehensive and entertaining review of echocardiography in contemporary clinical practice. The goal of Echo Florida is to introduce the newest applications of echocardiography while also emphasizing the application of basic and advanced echo in the daily practice of echocardiography in the echo lab, structural procedure rooms, cardiac operating rooms and critical care units.

Our major goal is that the presentations are relevant to the day-to-day practice of echocardiography.

While we cover contemporary research in echocardiography, this is not what Echo Florida is primarily designed to highlight. Instead, we aim to give the audience insight into how the faculty uses echocardiography in clinical decision making. Case-based sessions throughout the conference will complement the teaching points of the lecture-based presentations.

The faculty have been recruited not only because they are academic stars, but because they are superb clinicians, approachable people, and share a passion for teaching. They are all looking forward to this in-person meeting!

We have designed the sessions so that they are entertaining and interactive; to that end we will engage the audience by using the ASE Courses app to pose questions during the presentations and there will be multiple additional opportunities for Q and A. We will continue the tradition of having the faculty share cases that highlight their skill and expertise as well as those cases that provided teaching moments for them too.

A brief review of the program: Saturday, Sunday, and Monday will all include interactive presentations with a case-based flavor. Additionally, Saturday and Sunday afternoon will feature optional small group sessions with a focus on strain, hands-on TEE simulator training, 3D for sonographers and fascinating cases from the archives of CASE.

Saturday presentations cover the tools in the echo toolbox including 2D, Doppler, TEE, stress echo, 3D, and strain. Drs. Klein and Aurigemma will share their expertise on diastolic function. On Sunday we will switch to valvular heart disease and discuss cardio-oncology and POCUS applications. There will be extensive discussion of the pathophysiology of all forms of valve disease as well as catheter and surgical approaches to treatment. Monday will transition to ultrasound enhancing agents, congenital heart disease, cardiomyopathies, including Takotsubo, HCM and its mimics including amyloid heart disease, ventricular assist devices, diseases of the aorta, constrictive pericarditis and cardiac emergencies. We will close with expert opinions on the future of echocardiography.

Welcome to Orlando, a great place for fun and entertainment. We hope that the passion of our faculty for clinical echocardiography is evident, and you enjoy Echo Florida.



Course Director  
**Linda D. Gillam, MD, MPH, FASE**  
Past President, ASE  
Morristown Medical Center  
Morristown, NJ



Course Co-Director  
**Matt Umland, ACS, RDCS, FASE**  
Aurora Health Care  
Milwaukee, WI

## Faculty

**Gerard Aurigemma, MD, FASE**  
UMass Memorial Medical Center  
Worcester, MA

**Yvette Carvallo, RDCS, RVS, FASE**  
Morristown Medical Center  
Morristown, NJ

**Benjamin Eidem, MD, FASE**  
President, ASE  
Mayo Clinic  
Rochester, MN

**Judy Hung, MD, FASE**  
Past President, ASE  
Massachusetts General Hospital  
Boston, MA

**Allan Klein, MD, FASE**  
Past President, ASE  
Cleveland Clinic  
Cleveland, OH

**Konstantinos Koulogiannis, MD**  
Morristown Medical Center  
Morristown, NJ

**Deborah Kwon, MD, FASE**  
Cleveland Clinic  
Cleveland, OH

**Leo Marcoff, MD, FASE**  
Morristown Medical Center  
Morristown, NJ

**Vincent Sorrell, MD, FASE**  
University of Kentucky  
Lexington, KY

**Lissa Sugeng, MD, MPH, FASE**  
Northwell Health  
Manhasset, NY

# Program Information

## Overview of Echo Florida

Echo Florida is a comprehensive review of echocardiography, including dedicated sessions on cardiomyopathies, coronary artery disease (including stress testing), valvular heart disease, pericardial disease, heart failure, emerging technologies, complex congenital heart disease and case-based demonstrations on the role of 2D, and real time 3D/4D echocardiography, as well as strain imaging.

## Target Audience

This course is designed for adult and pediatric cardiologists, cardiovascular surgeons, cardiovascular anesthesiologists, cardiac radiologists, fellows in training, cardiovascular sonographers, cardiovascular nurse specialists, internists, intensivists, and emergency physicians with a special interest in clinical cardiology and echocardiography.

## Course Learning Objectives

Upon completion of these sessions, participants will be better able to:

1. Know the echocardiographic features of aortic, mitral, tricuspid, and pulmonic valve disease (stenosis and regurgitation).
2. Be able to quantitate valve stenosis and regurgitation and help select appropriate interventions.
3. Identify hypertrophic cardiomyopathy.
4. Identify simple and complex congenital disease.
5. Use echocardiography to diagnose and manage pericardial disease.
6. Use echocardiographic strain, 3D imaging and ultrasound enhancing agents to optimize the information obtained from echocardiography.

## Workshops – Small Group Sessions

Small group workshops offer registered participants the opportunity to get one-on-one time with faculty in a hands-on learning experience. Workshops are included with registration and in the total number of CME credits offered.

## Disclaimer

The information provided during this accredited CE activity is for continuing education purposes only and is not meant to substitute for the independent medical judgment of a healthcare provider relative to diagnostic and treatment options of a specific patient's condition.

## Accreditation and Designation

ASE is accredited by the Accreditation Council for Continuing Medical Education to provide continuing medical education for physicians. ASE designates this in-person activity for a maximum of **23.5 AMA PRA Category 1 Credits™**.

To claim all 23.5 CME credits you must attend two of the workshop sessions. Participants should claim only the credit commensurate with the extent of their participation in the activity. Science & Technology Theaters are not part of the Echo Florida program or eligible for CME credits or MOC points.

Successful completion of this CME activity, which includes participation in the evaluation component, enables the participant to earn up to **23.5 MOC points in the American Board of Internal Medicine's (ABIM) Maintenance of Certification (MOC) program, the American Board of Pediatrics (ABP) MOC program, and/or The American Board of Anesthesiology® (ABA) Maintenance of Certification in Anesthesiology Program® or MOCA®**.

Participants will earn MOC and/or MOCA points equivalent to the amount of CME credits claimed for the activity. It is ASE's responsibility to submit participant completion information to ACCME for the purpose of granting ABA MOCA and/or ABIM MOC points.

**ARDMS, CCI, and Sonography Canada** recognize ASE's certificates and have agreed to honor the CME credit hours toward their registry requirements for sonographers.

This activity has been reviewed by the **AAPA Review Panel** and is compliant with AAPA CME Criteria. This activity is designated for 23.5 AAPA Category 1 CME credits. PAs should only claim credit commensurate with the extent of their participation. Approval is valid from 10/7/2023 to 10/9/2023. AAPA reference number: CME-209329.

ASE's 11th Annual Echo Florida has been reviewed by the British Society of Echocardiography and is approved for up to 15 BSE Points (5 for full day; 3 for half day).



*Maintenance of Certification in Anesthesiology Program® and MOCA® are registered certification marks of the American Board of Anesthesiology®. MOCA 2.0® is a trademark of the American Board of Anesthesiology®.*

## Daily Breakdown of CME/MOC Credits:

Saturday General Session = 6.75

Saturday Workshop = 1.5 per workshop

Sunday General Session = 7.25

Sunday Workshop = 0.75

Monday General Session = 7.25

Participants should claim only the credit commensurate with the extent of their participation in the activity. To claim all 23.5 credits/point you must attend two workshop sessions.

# Program Information

# Attendee Information

## Disclosure

ASE is committed to ensuring that its educational mission and all accredited continuing educational programs provide a protected space to learn, teach, and engage in scientific discourse free from influence from organizations that may have an incentive to insert commercial bias into education.

While a monetary or professional affiliation with an ineligible company does not necessarily influence a speaker's presentation, the Standards for Integrity and Independence in Accredited Continuing Education and policies of the ACCME require that all financial relationships with ineligible companies be identified and mitigated prior to engaging in an accredited CE activity. In accordance with these policies, ASE actively identified relevant financial relationships between faculty in control of this accredited CE activity and ineligible companies and implemented mitigation strategies to eliminate any potential influence from persons or organizations that may have an incentive to insert commercial bias in this activity. Disclosure information is referenced and can be found on page 14 of this program.

## Commercial Support Disclosure Statement

**Educational Grants:** This accredited CE activity is supported in part by unrestricted educational grants from Bracco Diagnostics Inc., Edwards Lifesciences, Pfizer, and Medtronic, Inc.

**In-Kind Donations:** This accredited CE activity is supported in part by in-kind donations from CAE Healthcare and Intelligent Ultrasound.

## How to Claim CME/MOC

The deadline to claim credits/points is **November 9, 2023**.

On October 9, 2023, you will receive an email containing the link to the CME/MOC Evaluation Form for Echo Florida (email subject will be "ASE Echo Florida CME/MOC Evaluation"). Firewalls and security features on your email account may block or direct these emails to your spam/junk folder. Please be sure to thoroughly check your email account. If you are not able to locate the email, please contact **CME@asecho.org**.

The evaluation will include the opportunity to provide your registry board information to allow us to submit your credits or points on your behalf. ASE submits credits/points to ABIM, ABA, ABP, ARDMS and CCI on behalf of the learner. Credits for Echo Florida will be sent to these boards on November 10, 2023. At this time, your CME/MOC Certificate will be uploaded to your ASE Learning Hub account. Instructions to accessing your ASE Learning Hub account will be included in the email.

## Registration Location and Hours

The ASE Registration desk is located in the Newport Lobby, located in the Disney Yacht & Beach Club Resort Convention Center. The Registration desk will be staffed during the following hours:

Friday, October 6, 2023 . . . . . 4:00 PM – 6:00 PM

Saturday, October 7, 2023 . . . . . 6:45 AM – 6:30 PM

Sunday, October 8, 2023 . . . . . 6:30 AM – 5:45 PM

Monday, October 9, 2023 . . . . . 6:30 AM – 4:45 PM

## Food Functions

ASE will provide breakfast, lunch, and coffee breaks for all registered attendees of the main conference Saturday–Monday in Newport East. Please refer to the program schedule beginning on page 7 for the times.

Disney's Yacht & Beach Club Resorts offers their guests a variety of dining options. Please see page 6 for more details.

## Internet Access

There is complimentary wireless internet available throughout Disney's Yacht & Beach Club Resorts. Attendees of this course also receive complimentary wireless internet in their guest rooms.

## Business Center

The Business Center is located in the Convention Center and is open daily. It offers fax, photo-copier, mail, and computer services.

## Safety

Audience seating is on a first-come, first-served basis. According to fire code, a session must be closed if the room fills to capacity. Inappropriate behavior or undesirable conduct, including, but not limited to, verbal or physical abuse, whether threatened or performed, will not be permitted or tolerated. You must wear your name badge at all times when attending the session or events.

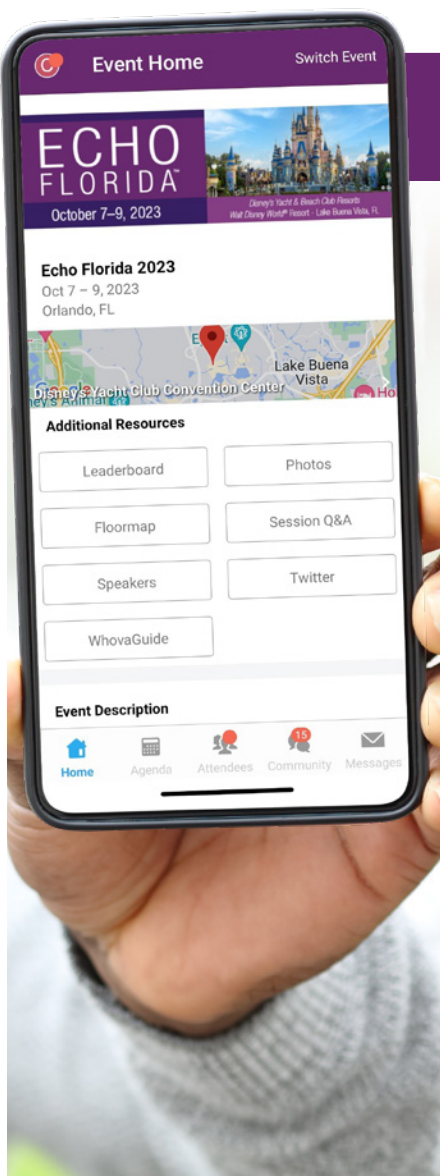


# Attendee Information and Regulations

## Photography/AV Policy

No person may record any portion of the ASE Echo Florida Course, either by video, still or digital photography, audio, or any other recording or reproduction mechanism. This includes recording of presentations and supporting audio visual materials. Taking photos of, or recording the content of, presentation slides is also prohibited and is considered intellectual piracy. Attendees who ignore this policy will be asked to leave the educational session and are at risk of losing their name badge and attendance privileges. Photographs taken for the purpose of sharing on

social media are allowed, but should avoid showing presentation slides. Please use #EchoFlorida when posting on social media. ASE reserves the rights to all recordings or reproductions at ASE meetings. Please be aware that during the ASE Echo Florida Course, attendees, vendors, guests, and exhibitors may be photographed or videotaped by ASE staff capturing the event. Some of these photographs or videos may be displayed by ASE in future publications or other materials. By virtue of your attendance, you agree to allow ASE to use photographs of you in its promotional materials.



## Download Whova, ASE's New Live Course App

ASE is using the online platform Whova as its 2023 live courses app. Whova will give you access to the entire meeting program at your fingertips. You can also use the app to ask questions during the sessions you attend. Search "Whova" in the Google Play and Apple Stores to download.

Whova allows for more interaction among participants at the meeting including:

- Finding others who are attending Echo Florida and reaching out to them at any time.
- Planning social activities such as a morning run, coffee hours, or meet-ups with your fellow attendees.

Important course information like:

- The event agenda and planning your personal schedule.
- Access to documents and slides shared by organizers or speakers.
- Updates like possible last minute session changes from the organizers.

If you have already used the Whova app, just double-check what is installed on your phone, tablet, or computer, and log in using your existing account email and password.

### First Time Whova User?

#### MOBILE APP

After downloading Whova, you will be prompted to create an account. We suggest that you use the email address you used when registering for Echo Florida and create a strong password. By using the email address you used when registering for Echo Florida, the platform will automatically associate you with the event and take you to your event page automatically.

#### WEB PORTAL

Once you have downloaded and signed into the Whova app on your mobile device, you will receive an email from Whova with the web portal URL. Open your email on your laptop/tablet and click the web portal link to access the app through your browser.

If you are not automatically connected to the event and you are prompted for an event code, please reference the email you were sent on Monday, October 2, from "event-noreply@whova.io", or visit the registration desk in the Newport Lobby.

# Location Information

## Disney's Yacht & Beach Club Resort

Delight in the formal grace of a grand New England-style yacht club at this lakeside hotel. Relax in the inviting elegance of a plush lobby replete with nautical touches, explore the whimsical Stormalong Bay, and rent a variety of watercraft from Bayside Marina. Sharing many amenities with its pastel-toned sister, Disney's Beach Club Resort, Disney's Yacht Club Resort is walking distance to Epcot® and a convenient boat ride to Disney's Hollywood Studios®.

Take the plunge at this beach-side water park area that offers three acres of aquatic fun for the whole family. Catch currents in an expansive sandbottomed pool. From atop the mast of a life-sized shipwreck replica, zip down a 230-foot-long water slide, one of the highest hotel slides at Walt Disney World Resort. Float down the lazy river on an inner tube, unwind in one of three whirlpool spas, or simply relax on the elevated tanning deck. There is also an array of other dazzling leisure activities like tennis, volleyball, fishing, and movie projections under the stars to name a few.

The Ship Shape Resort Fitness Center and Salon features a full-service spa, salon, and fitness facility where you can keep up with your daily workout routine or surrender to pampering treatments like a massage or facial.

The championship golf courses at Walt Disney World Resort are just a short drive away! These courses have garnered praise and prestigious awards for their superlative design, impeccable service, world-class amenities, and overall playability throughout the years. When you play any of the four courses, you will discover the characteristic beauty and benefits that continue to rake in the accolades for Disney Golf.

## Make Time for the Magic!

As a Disney Resort Guest, you will enjoy special benefits that make your Walt Disney World® stay easier and more relaxing than ever. These benefits provide everything from extra time in the Theme Parks to convenient transportation.

Special ticket options are available for meeting attendees. You must purchase online at [MyDisneyGroup.com/EchoFL2023](https://www.mysdisneygroup.com/EchoFL2023) or call 407-939-4686 to receive these special Theme Park tickets. If you plan on visiting a Theme Park, please be aware that to enter a park both a park reservation and valid admission for the same park on the same date are required for all guests ages 3 and up. Plan your Walt Disney World vacation by setting up a My Disney Experience account. You can manage your Disney Resort

reservation, make your Theme Park reservations and, access Resort transportation routes all with the touch of your finger. Set up an account at [MyDisneyExperience.com](https://www.mysdisneygroup.com) and download mobile app from the Apple Store or Google Play.

## Disney's Yacht & Beach Club Resorts Dining Options

**Ale & Compass Restaurant:** Dine on New England comfort food and classic seafood dishes in a coastal-inspired restaurant that's reminiscent of a cozy lighthouse. Serving breakfast, lunch, and dinner.

**Beaches & Cream Soda Shop:** Bring your appetite to this retro soda fountain where the burger is king and every day is sundae. Offering lunch and dinner.

**Beach Club Marketplace:** Start your day with a breakfast sandwich or Mickey waffles. Then fuel up on lunch and dinner with a selection of macaroni and cheese dishes, hot or cold sandwiches, or refreshing salads. Open for breakfast, lunch, and dinner.

**Cape May Café:** Stop by this New England-inspired venue for buffet meals—including a bountiful breakfast or sensational surf and turf dinner. Serving breakfast and dinner.

**Crew's Cup Lounge:** Race into port for a refreshing beverage at this cozy outpost nestled next to the Yachtsman Steakhouse. Unwind with a pint, a glass of wine or a cool cocktail or from a selection of tasty menu items. Hours vary.

**Hurricane Hanna's Waterside Bar and Grill:** Brace for frosty beverages and beautiful bay views at this not-so-blustery walk-up bar.

**Martha's Vineyard:** Canoodle over a Cape Cod or any signature cocktail from the full bar menu at this mellow New England beach house-inspired lounge. Imported wines and draft beers, including Sam Adams Seasonal, enhance the mood. Available for dinner and late night dining.

**The Market at Ale & Compass:** Find breakfast favorites like Mickey waffles with bacon, tasty sandwiches, and hot paninis at lunchtime and delightful coffee beverages to brighten your day. Offering breakfast, lunch, and dinner.

**Yachtsman Steakhouse:** Savor premium steaks, fresh seafood, and more at this family-friendly, New England-style steakhouse. Serving dinner.

Disney's Yacht & Beach Club Resorts is conveniently connected by water taxi, bus, or walking paths to numerous Disney restaurants within the Epcot Resort area.

# Schedule of Events

## Friday, October 6, 2023

4:00 –  
6:00 PM **Registration**  
Newport Lobby

## Saturday, October 7, 2023

6:45 AM **Registration, Breakfast, and Visit Exhibits**  
Newport Lobby and Newport East Ballroom

### The Basic Tools in the Toolbox Newport West Ballroom

7:15 AM **Welcome and Logistics**  
*L. Gillam*

7:30 AM **President's Welcome**  
*B. Eidem*

7:45 AM **"C'est LAVI!" Optimizing Left Sided Chamber Assessment**  
*G. Aurigemma*

8:10 AM **On The Main Stage: Approaches to Assessing Left Ventricular Systolic Function**  
*V. Sorrell*

8:35 AM **Getting Your "Fill:" Basic Diastolic Physiology and Assessment**  
*G. Aurigemma*

9:00 AM **Strain Imaging: What, How, Why, and When**  
*A. Klein*

9:25 AM **On The Front Line: How to Optimize Strain**  
*M. Umland*

9:40 AM **No Longer Playing Second Fiddle: How to Assess the Right Heart!**  
*L. Sugeng*

10:05 AM **Question and Answer**

10:20 AM **Refreshment Break and Visit Exhibits**  
Newport East Ballroom

10:50 AM **Diastolic Function: Normal? Abnormal? Truly Indeterminate? Help! How to Reconcile Conflicting Results (Cases)**  
*G. Aurigemma, A. Klein*

11:15 AM **3D How-To: Acquisition, Cropping, and Display**  
*L. Sugeng*

11:40 AM **3D for TTE: Practice Makes Perfect: Tips for the Sonographer**  
*M. Umland*

12:05 PM **Question and Answer**

12:30 PM **Lunch and Visit Exhibits**  
Newport East Ballroom

## Science & Technology Theater

(This session is not included in the CME/MOC for this course.)  
Newport West Ballroom

1:00 –  
2:00 PM **Utilizing Echocardiography in Hypertrophic Cardiomyopathy**  
Sponsored by: *Bristol Myers Squibb*  
  
Join this session to review the echocardiography techniques used in HCM diagnosis and management, including an illustrative patient case and practical tips.  
Presenter: *Pankaj Arora, MD, FAHA, FASE*

2:00 PM **Break**

2:30 PM **How I Do a TEE: Tricks of the Trade**  
*K. Koulogiannis*

2:50 PM **I Could Not Have Done it Without 3D: Cases**  
*K. Koulogiannis, L. Marcoff, L. Sugeng*

3:20 PM **Stress Echocardiography I: Coronary Artery Disease? Treadmill, Bicycle, and Pharmacologic (Cases)**  
*V. Sorrell*

3:40 PM **Stress Echocardiography II: Non-Coronary Artery Disease Indications – Why, When, and How (Cases)**  
*L. Gillam*

4:00 PM **Stress Tips for Sonographers**  
*Y. Carvalho*

4:10 PM **Question and Answer**

4:30 PM **Refreshment Break, General Session Adjourn**  
Newport East Ballroom

## Workshops – Small Group Sessions

4:45 –  
5:30 PM **Session 1**

**TEE Simulation: How to Get Those Hard-to-Get Views** (*Limited to 25 participants*)  
Cape Cod AB  
*J. Hung, K. Koulogiannis, L. Marcoff, L. Sugeng*

**Strain: How to Get it Right**  
Newport West Ballroom  
*G. Aurigemma, M. Umland*

5:45 –  
6:30 PM **Session 2**

**TEE Simulation: How to Get Those Hard-to-Get Views** (*Limited to 25 participants*)  
Cape Cod AB  
*J. Hung, K. Koulogiannis, L. Marcoff, L. Sugeng*

**How to Get it Right**  
Newport West Ballroom  
*G. Aurigemma, M. Umland*

6:30 PM **Adjourn**

# Schedule of Events

<b>Sunday, October 8, 2023</b>	
6:30 AM	<b>Breakfast and Visit Exhibits</b> Newport East Ballroom
<b>Doorways Through Your Heart: Valvular Heart Disease</b> Newport West Ballroom	
7:15 AM	<b>Saturday Round Up: Questions You Forgot to Ask</b> <i>L. Gillam</i>
7:30 AM	<b>Aortic Stenosis: Area, Gradients, Flow? Core Concepts in Aortic Stenosis</b> <i>J. Hung</i>
8:00 AM	<b>How Echo Assesses Aortic Stenosis: Trying to Get It Right</b> <i>Y. Carvalho, M. Umland</i>
8:25 AM	<b>Dobutamine Stress Echo for Low Flow Low Gradient Aortic Stenosis: When and How</b> <i>L. Marcoff</i>
8:45 AM	<b>Aortic Regurgitation: Getting the Complete Picture – Why and How Much? Illustrative Cases</b> <i>J. Hung</i>
9:05 AM	<b>Goofs, Coups, and Aortic Cases I Will Never Forget</b> <i>J. Hung, L. Marcoff</i>
9:35 AM	<b>No Longer Forgotten: The Tricuspid and Pulmonic Valves</b> <i>B. Eidem, L. Sugeng</i>
10:05 AM	<b>Question and Answer</b>
10:25 AM	<b>Refreshment Break and Visit Exhibits</b> Newport East Ballroom
10:55 AM	<b>Mitral Regurgitation: Primary, Secondary, and Proportionality – Core Concepts and Controversy</b> <i>L. Gillam</i>
11:20 AM	<b>Grading Mitral Regurgitation: It Is Complicated</b> <i>J. Hung</i>
11:45 AM	<b>“The Half-Time Show:” Quantitation of Rheumatic and Calcific Mitral Stenosis</b> <i>G. Aurigemma</i>
12:00 PM	<b>Options for Mitral Stenosis Treatment: Planning and Monitoring</b> <i>K. Koulogiannis</i>
12:25 PM	<b>Question and Answer</b>
12:35 PM	<b>Lunch and Visit Exhibits</b> Newport East Ballroom

<b>Science &amp; Technology Theater</b> <i>(This session is not included in the CME/MOC for this course.)</i> Newport West Ballroom	
1:05 – 2:05 PM	<b>Shaping the Future of Ultrasound with Next Level AI</b> Sponsored by: <i>Siemens Healthineers</i>  AI is prominent throughout society, including cardiovascular ultrasound. Join us for a deep dive into Siemens Healthineers' latest ultrasound system, ACUSON Origin, and see how its revolutionary AI features benefit the patient, the clinician, and facility. Presenters: <i>Lissa Sugeng, MD, MPH, FASE;</i> <i>Robert Burke, MD, FASE, FSCAI; Mani Vannan, MD, FASE;</i> <i>Kevin Moreau, RDCS</i>
2:05 PM	<b>Break</b>
2:35 PM	<b>Endocarditis: Multimodality Imaging</b> <i>D. Kwon, L. Marcoff</i>
3:00 PM	<b>Prosthetic Valves: Not Quite Good as New</b> <i>L. Sugeng</i>
3:20 PM	<b>Valvular Heart Disease: The Important Contributions of CT and MRI</b> <i>D. Kwon</i>
3:45 PM	<b>POCUS: Here Today and Here Tomorrow – Current Capabilities and Applications</b> <i>V. Sorrell</i>
4:10 PM	<b>Cardio-Oncology: When the Two Deadliest Diseases Collide</b> <i>L. Gillam</i>
4:30 PM	<b>Question and Answer</b>
4:50 PM	<b>Refreshment Break, General Session Adjourn</b> Newport East Ballroom
<b>Workshops – Small Group Sessions</b>	
5:00 – 5:45 PM	<b>TEE Simulation: How to Get Those Hard-to-Get Views</b> <i>(Limited to 25 participants)</i> Cape Cod AB <i>J. Hung, K. Koulogiannis, L. Marcoff, L. Sugeng</i>  <b>3D for Sonographers: How to Acquire and Display Key Views (TTE and TEE)</b> Newport West Ballroom <i>Y. Carvalho, M. Umland</i>  <b>Cases from CASE</b> Newport East Ballroom <i>V. Sorrell</i>
5:45 PM	<b>Adjourn</b>



<b>Monday, October 9, 2023</b>	
6:30 AM	<b>Breakfast and Visit Exhibits</b> Newport East Ballroom
<b>Echocardiographic Potpourri</b> Newport West Ballroom	
7:15 AM	<b>Welcome and Summary of Day 2: Questions That Kept You Awake</b> <i>L. Gillam</i>
7:30 AM	<b>When You Need a Helping Hand: What You Need to Know About Assist Devices</b> <i>K. Koulogiannis</i>
7:55 AM	<b>I Can See Clearly Now – Cases Where Contrast Administration Makes a Difference</b> <i>Y. Carvalho, L. Gillam</i>
8:20 AM	<b>Imaging in the Adult Patient with Congenital Heart Disease</b> <i>B. Eidem</i>
8:50 AM	<b>The Chameleon: Constrictive Pericarditis</b> <i>A. Klein</i>
9:20 AM	<b>Diseases of the Aorta</b> <i>D. Kwon</i>
9:45 AM	<b>Question and Answer</b>
10:00 AM	<b>Refreshment Break and Visit Exhibits</b> Newport East Ballroom
10:25 AM	<b>Hypertrophic Cardiomyopathy and HCM Mimics: An Echo-MRI Collaboration: Echocardiography</b> <i>L. Gillam</i>
10:50 AM	<b>Hypertrophic Cardiomyopathy and HCM Mimics: An Echo-MRI Collaboration: MRI</b> <i>D. Kwon</i>
11:10 AM	<b>Amyloid Heart Disease: A Multimodality Approach</b> <i>V. Sorrell</i>
11:25 AM	<b>Wow and Oh No! Structural Heart Cases I Will Never Forget</b> <i>J. Hung, L. Marcoff</i>
11:55 AM	<b>Stress Cardiomyopathy: Helping the Octopus Escape the Pot</b> <i>V. Sorrell</i>
12:15 PM	<b>Question and Answer</b>
12:30 PM	<b>Lunch and Visit Exhibits</b> Newport East Ballroom

<b>Science &amp; Technology Theater</b> <i>(This session is not included in the CME/MOC for this course.)</i> Newport West Ballroom	
1:00 – 2:00 PM	<b>Transthyretin Amyloid Cardiomyopathy (ATTR-CM): Evaluating Clinical Findings to Support Earlier Diagnosis and Management</b> <i>Sponsored by: Pfizer Inc.</i>
2:00 PM	<b>Break</b>
<b>In The Home Stretch: Cases to Fill Your Mental Imaging Library</b> Newport West Ballroom	
2:30 PM	<b>True Confessions: When We Got It Wrong</b> <i>G. Aurigemma, L. Gillam, V. Sorrell</i>
2:55 PM	<b>Amazing Cases in Congenital Heart Disease</b> <i>B. Eidem</i>
3:15 PM	<b>Medical Emergencies: When You Need to Think Fast!</b> <i>L. Marcoff, M. Umland</i>
3:45 PM	<b>What I See in My Crystal Ball: The Future of Echo – Artificial Intelligence and Beyond</b> <i>B. Eidem, L. Gillam, V. Sorrell, L. Sugeng, M. Umland</i>
4:15 PM	<b>Going, Going, Gone: Last Call for Questions</b> <i>All Faculty</i>
4:45 PM	<b>Adjourn</b>

---

# Utilizing Echocardiography in Hypertrophic Cardiomyopathy

Join this session to review guideline-based echocardiography techniques used in diagnosing and monitoring HCM, including an illustrative patient case and practical tips.

October 7, 2023  
1:00 PM–2:00 PM ET  
Newport West Ballroom

**Pankaj Arora,\* MD, FAHA, FASE**  
University of Alabama

\*A paid speaker of Bristol Myers Squibb.

HCM=hypertrophic cardiomyopathy

This session is not part of the official 2023 Echo Florida, as planned by the Program Committee, or in any way endorsed by or affiliated with ASE. This event does not qualify for continuing medical education (CME) credit.

This program is sponsored by Bristol Myers Squibb.



© 2023 MyoKardia, Inc., a Bristol Myers Squibb company.  
CV-US-2300460 09/23

## Echo Florida 2023 Science and Technology Theater

# Shaping the future of Ultrasound with next level AI

Sunday, October 8<sup>th</sup>, 2023  
1:05 p.m. – 2:05 p.m.  
Newport Ballroom West



### Join Siemens Healthineers on Sunday, October 8, from 1:05 – 2:05 p.m. for a compelling discussion on Artificial Intelligence.

AI is prominent throughout society, including cardiovascular ultrasound. Join us for a deep dive into Siemens Healthineers' latest ultrasound system, ACUSON Origin, and see how its revolutionary AI features benefit the patient, the clinician, and facility.

*The products/features mentioned in this document may not be commercially available in all countries. Due to regulatory reasons their future availability cannot be guaranteed. Please contact your local Siemens Healthineers organization for further details.*

*This session is not part of the official 2023 Echo Florida, as planned by the Program Committee, or in any way endorsed by or affiliated with ASE. This event does not qualify for continuing medical education (CME) credit.*

### Session topics

Moderator	Lissa Sugeng, MD, MPH, FASE
The Complete Echo with View Classification and AI	Robert Burke, MD, FASE, FSCAI
Next Level Volume, EF, and Strain with AI: AI Chamber Contouring with/without ECG and/or Contrast	Mani Vannan, MD, FASE
Case Examples from the System and/or Live Scanning	Kevin Moreau, RDCS

We look forward to seeing you!

### Register now!



# Exhibit Information

Exhibits are located in the Newport East Ballroom during the dates and hours listed below:

Saturday, October 7 ..... 6:45 AM – 2:30 PM

Sunday, October 8 ..... 6:30 AM – 2:35 PM

Monday, October 9 ..... 6:30 AM – 2:30 PM

## Exhibitor Descriptions



LIFE FROM INSIDE

**Bracco Diagnostics, Inc.**  
259 Prospects Plains Road, Building H  
Monroe Township, NJ 08831  
United States  
1-609-514-2200  
braccoimaging.com/us-en



Bracco Imaging offers products and solutions for all key diagnostic imaging modalities: X-ray (including Computed Tomography, Interventional Radiology, and Cardiac Catheterization), Magnetic Resonance Imaging, Contrast Enhanced Ultrasound, and Nuclear Medicine through radioactive tracers. This portfolio is complimented by a range of medical devices and advanced administration systems.



**Bristol Myers Squibb**  
3401 Princeton Pike  
Lawrenceville, NJ 08548  
United States  
1-800-332-2056  
BMS.com



**Fujifilm**  
81 Hartwell Avenue  
Lexington, MA 2421  
United States  
1-888-385-4633  
FUJIFILM.com



FUJIFILM Healthcare Americas Corporation is a comprehensive healthcare company with an extensive range of technology and expertise in the detection, diagnosis and treatment of diseases. It's award-winning, cloud-based Synapse® Enterprise Imaging portfolio is designed to support professionals across the organization. At the portfolio's foundation, the enterprise Synapse 7x PACS uses server-side technology to deliver cardiology and radiology department imaging on one common diagnostic PACS viewer.



**GE HealthCare**

**GE Healthcare**  
251 Locke Drive  
Marlborough, MA 01752  
United States  
1-508-573-8404  
GEHealthcare.com



GE HealthCare is a leading global medical technology, pharmaceutical diagnostics, and digital solutions innovator dedicated to providing integrated solutions to make hospitals more efficient, clinicians more effective, therapies more precise, and patients healthier. Learn more at GEHealthCare.com..



**LANTHEUS™**

**Lantheus**  
331 Treble Cove Road  
Billerica, MA 01862  
United States  
1-978-436-7031  
Lantheus.com



**Mindray**  
800 MacArthur Boulevard  
Mahwah, NJ 07430  
United States  
1-201-995-8000  
Mindray.com

Mindray is a global leader and developer of healthcare technologies and solutions for monitoring, anesthesia, and ultrasound. Mindray's innovative radiology ultrasound machines deliver exceptional image quality and advanced technologies to help clinicians improve reproducibility and optimize productivity. Learn more: Mindray.com.



**Northeast Georgia Health System**

**Northeast Georgia Health System**  
743 Spring Street  
Gainesville, GA 30501  
United States  
1-770-868-5142  
NGHS.com/Careers

Northeast Georgia Health System (NGHS) is a not-for-profit community health system dedicated to improving the health and quality of life of the people of Northeast Georgia. NGHS is anchored by Northeast Georgia Medical Center's five hospital campuses – NGMC Gainesville, NGMC Braselton, NGMC Barrow, NGMC Habersham and NGMC Lumpkin – with a total of more than 850 beds and more than 1,300 medical staff members representing more than 60 specialties. It is our mission to improve the health of our community in all we do.



**Philips Healthcare**  
22100 Bothell Everett Hwy  
Bothell, WA 98021  
United States  
1-800-722-9377  
USA.Philips.com





Pfizer  
66 Hudson Boulevard East  
New York, New York 10001  
United States  
1-800-879-3477  
Pfizer.com

Global Pharmaceutical Company



Siemens Healthineers  
40 Liberty Boulevard  
Malvern, PA 19355  
United States  
1-800-888-7436  
Siemens-Healthineers.com

Siemens Healthineers pioneers breakthroughs in healthcare. For everyone. Everywhere. As a leading medical technology company Siemens Healthineers is continuously developing its product and service portfolio, with AI-supported applications and digital offerings that play an increasingly important role in the next generation of medical technology for cardiovascular care and more. Further information is available at Siemens-Healthineers.com.



UVA Health  
1415 Jefferson Park Avenue  
McKim Hall, Room G144  
PO Box 800711  
Charlottesville, VA 22908  
United States  
1-434-326-6768  
Jobs.Virginia.edu/UVA-Health

UVA Health is an integrated health system with a world-class academic medical center including level 1 trauma center, level IV NICU, the first NCI-designated Comprehensive Cancer Center in Virginia, and UVA Health Children's, the #1 pediatric hospital in Virginia.

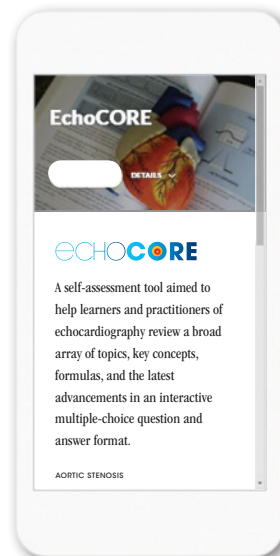
American Society  
of Echocardiography

# ECHO CORE

Available Now! [ASEcho.org/echoCORE](http://ASEcho.org/echoCORE)

ASE's newest online educational tool, echoCORE, is a review and evaluation tool to help practitioners of echocardiography review a broad array of topics, key concepts, formulas, and the latest echo advancements in an interactive multiple-choice question and answer format. **Test your knowledge and start learning today!**

Introductory Pricing for a One-Year Subscription  
ASE Members: \$250 | Nonmembers: \$300



### Key Product Highlights:

- Developed by 24 experts in the field
- Over 38 topics covered
- 150 questions
- Customized feedback with external resource links to ASE guidelines, full lectures on topics, JASE articles, and more.
- User receives a performance summary on each topic.



# Faculty Disclosures

**The following faculty members do not have any relationships with industry/commercial supporters to disclose:**

Judy Hung, MD, FASE

Deborah Kwon, MD, FASE

Vincent L. Sorrell, MD, FASE, FACP ASIM, FACC, FCMR

Matt Umland, ACS, RDCS, FASE

**The following faculty members do have financial relationships with industry/commercial supporters to disclose:**

Gerard P. Aurigemma MD, FASE, FACC, FAHA; GE HealthCare (Consultant or Advisor); TomTec (Speaker/Speaker's Bureau)

Yvette Carvallo, RDCS, RVS, FASE; Bracco Diagnostics (Speaker/Speaker's Bureau); Lantheus Medical Imaging (Speaker/Speaker's Bureau)

Linda Gillam, MD MPH FASE; Edwards Lifesciences, Philips, Medtronic (Consultant or Advisor); Abbott, Edwards Lifesciences, Medtronic (Research Support/Funding)

Allan Klein, MD, FASE; Cardiol Therapeutics, Kiniksa, Philips (Consultant/Advisor; Research Funding/Support); Pfizer (Consultant/Advisor); Wolters Kluwer, Elsevier (Royalties)

Konstantinos Koulogiannis, MD; Abbott, Edwards Lifesciences, (Consultant/Advisor); 4C Medical Technologies (Stockholder)

Leo Marcoff, MD, FASE; 4C Medical (Stockowner)

Lissa Sugeng, MD, MPH, FASE; Siemens Healthineers (Speaker/Speaker's Bureau, Research Support/Funding); Philips (Speaker/Speaker's Bureau, Consultant/Advisor)

**The following members of the ASE CME Committee (not serving as faculty) do not have any relationships with industry/commercial supporters to disclose:**

Mary Corretti, MD, FASE – Chair

Bruce Landeck, II, MD, FASE – Co-Chair

Elvera Baron, MD, PhD, FASE – Member at Large

Minakshi Biswas, MD – Vascular Representative

Michael Boisen, MD, FASE – Member at Large

Mahesh Chandrasekhar, MD – Rising Star Representative

Ian Crandall, BS, MS, RCS, FASE – Member at Large

Nancy Cutler, MD, FASE – Member at Large

Ihab Hamzeh, MD, FASE – Member at Large

David Harrild, MD, PhD, FASE – Member at Large

Carlton Hartwell, ACS, RDCS, FASE – Member at Large

Denise Ignatowski, RS, RDCS, FASE – Member at Large

James Iwaz, MD, FASE – Member at Large

Eric Kallstrom, MBA, ACS, FASE, FAIUM, FACC – Sonographer Representative

Konstantinos Koulogiannis, MD – Interventional Representative

Dinesh Kurian, MD, MBA, FASE – Perioperative Representative

Michael Lanspa, MD, FASE – Critical Care Representative

Elizabeth Le, MD, FASE – Member at Large

Peace Madueme, MD, MS, FASE – Pediatric Representative

Laura Mercer-Rosa, MD, MSCE, FASE – Member at Large

Roosha Parikh, MD, FASE – Member at Large

Tracy Ralston, RDCS, FASE – Member at Large

Parang Tipnis, MD, FASE – Member at Large

**All members of the ASE staff who were involved in the planning and implementation of this activity do not have any relationships with industry/commercial supporters to disclose:**

Kelly Joy, CMM, CMP, Healthcare CME Manager

Christina LaFuria, Vice President of Educational Activities

Jaclyn Levine, CMP, Senior Director of Meetings

Jenna Minser, Meeting Planner

American Society of Echocardiography

# ASE 2024

35th Annual Scientific Sessions

# Global Echocardiography

*Innovations in Diagnosis and Beyond*

**June 14-16, 2024**

**Oregon Convention Center  
Portland, OR**

**Abstract Submission Opens October 5, 2023**

[ASEScientificSessions.org](https://www.asescientificsessions.org)

#ASE2024

# ECHO FLORIDA™

# 11th ANNUAL

ASE would like to thank our  
Industry Roundtable Partners.



## Connect with ASE

Join the conversation by using #EchoFlorida

 [Facebook.com/asecho](https://www.facebook.com/asecho)

 [@ASE360](https://twitter.com/ASE360)

 [American Society of Echocardiography](https://www.linkedin.com/company/asecho)

 [@ASE360](https://www.instagram.com/ASE360)

 [Connect.asecho.org](https://connect.asecho.org)

 [ASE360](https://www.youtube.com/ASE360)

[#EchoFlorida](https://twitter.com/ASE360)



2530 Meridian Parkway

Suite 450

Durham, NC 27713 USA

Phone: 1-919-861-5574

Fax: 1-919-882-9900

[ASEcho.org](https://www.asecho.org)